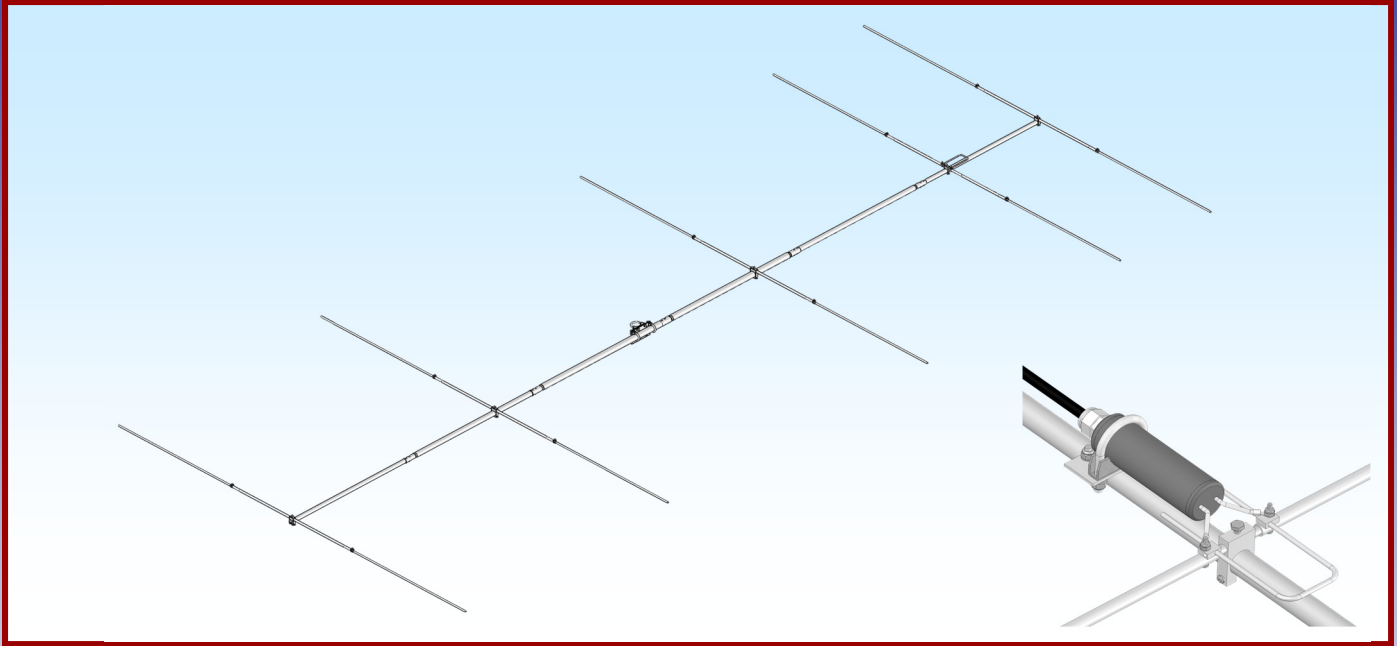




M2 Antenna Systems, Inc. Model No: 6M5XHG



SPECIFICATIONS:

Model	6M5XHG	Power Handling	3 kW, Higher avl.
Frequency Range.....	50.0 To 50.3 MHz	Boom Length / Dia.....	243" / 1", 1-1/4" & 1-1/2"
*Gain, (FS) / Over gnd	12.0 dBi	Maximum Element Length.....	113"
Front to back	21 dB Typical	Turning Radius:.....	139"
Beamwidth	E=44° H=50°	**Stacking Distance.....	23' H & 25' W
Feed type	Direct feed	Mast Size.....	2" Nom.
Feed Impedance.....	50 Ohms Unbalanced	Wind area / Survival	2.2 Sq. Ft. / 100 MPH
Maximum VSWR.....	1.2:1 Typical	Weight / Ship Wt.....	11 Lbs. / 15 Lbs.
Input Connector.....	"N" Female		

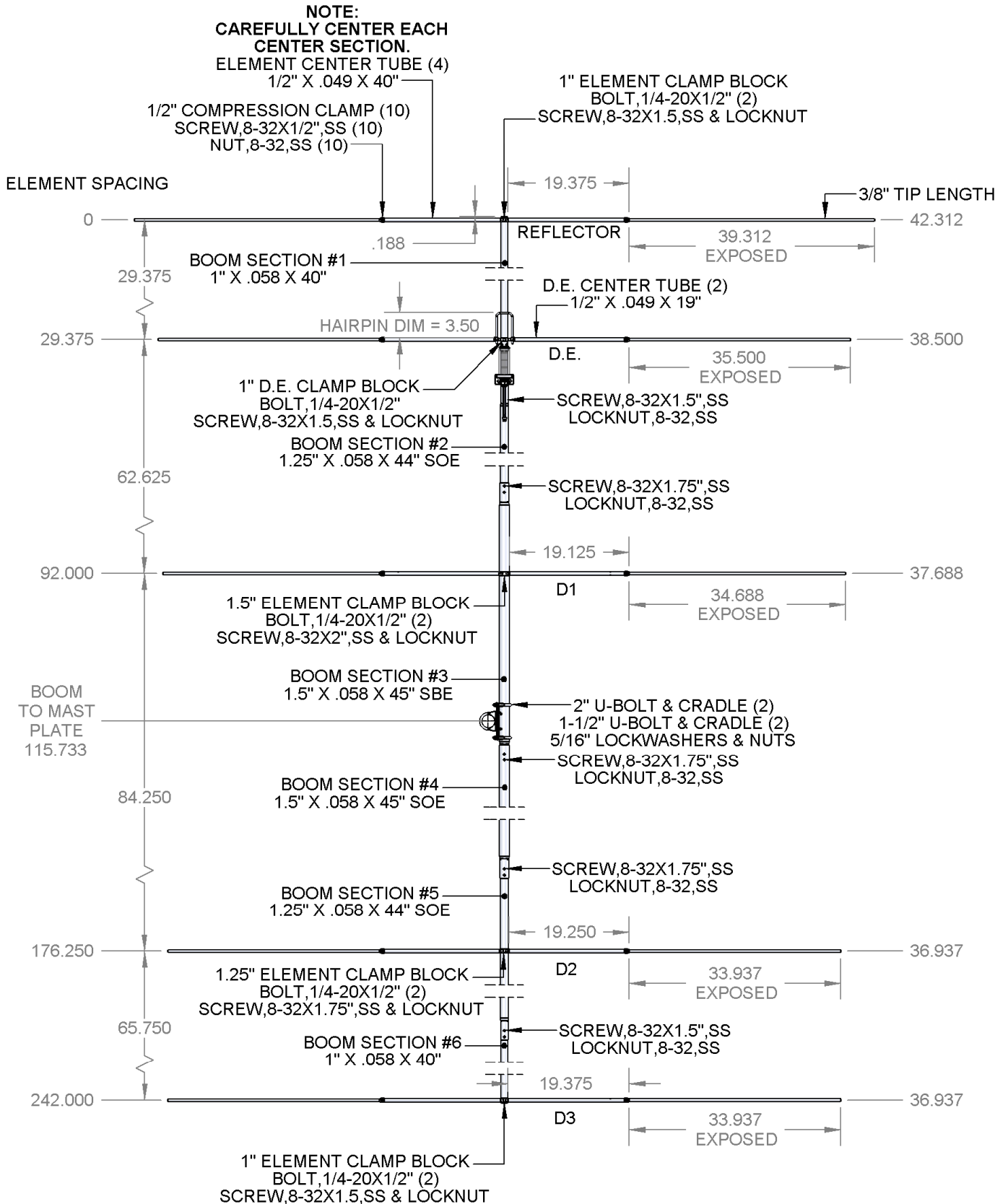
***Subtract 2.14 from dBi for dBd / FS = Free Space / ** H = High / W = Wide**

FEATURES:

The 6M5XHG is the latest computer optimized version of our popular 6M5X. The 6M5XHG has been re-designed to use a hairpin type direct feed. We just made a good thing better, maintaining a low wind load and great performance for its size. The 6M5XHG will compliment the rest of your antenna system and not overload your tower. Quick and easy to assemble, it is also great for mountain topping, grid expeditions and DXpeditions. The 6M5XHG features machined aluminum "Slip on" element mounting blocks, guarantees this antenna to stay up for years to come. The 6M5XHG is perfect for the Ham trying 6 meters for the first time or the seasoned vet who may stack them for lower angle of radiation or even some EME use.

6M5XHG DIMENSION SHEET

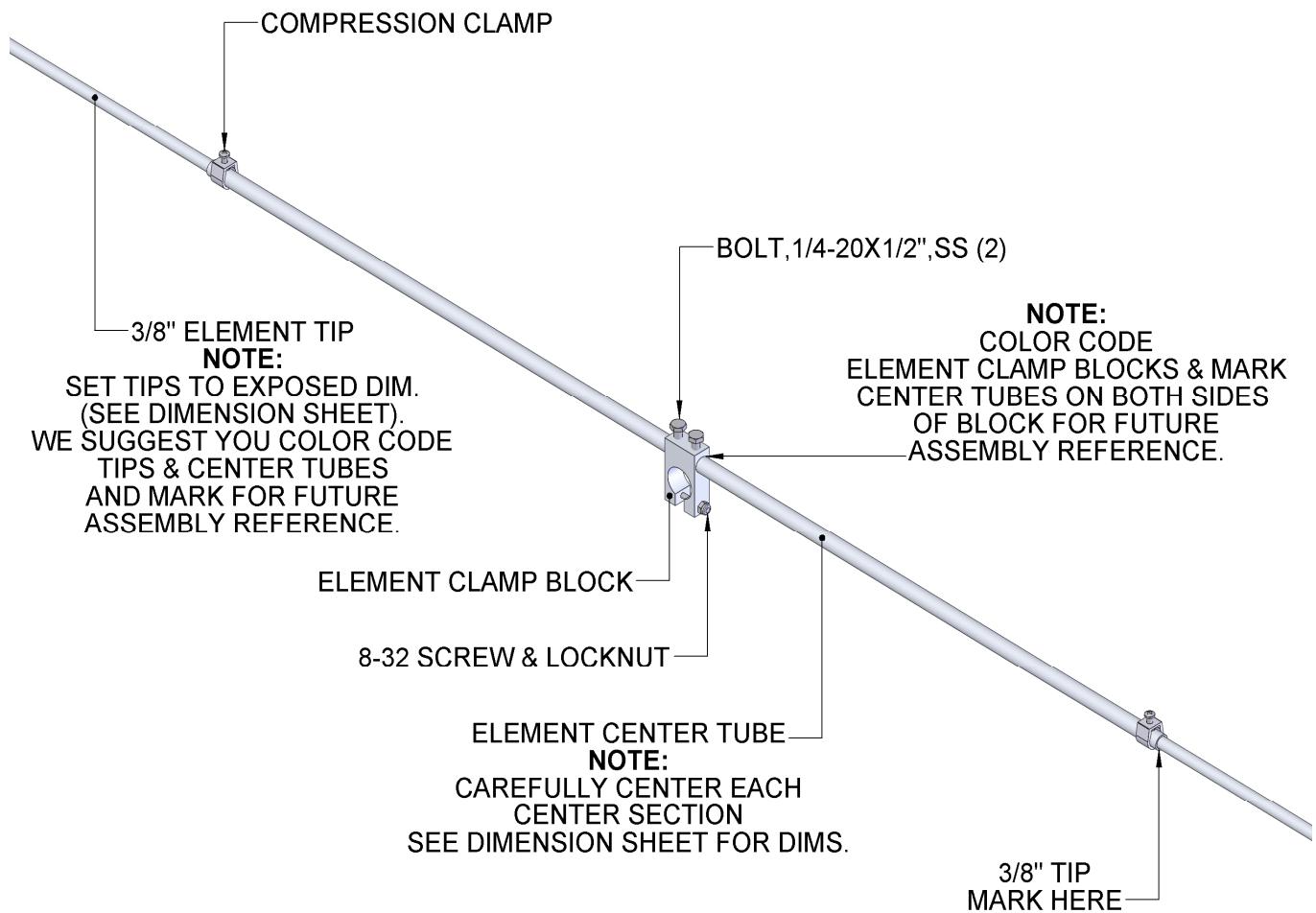
TOOLS REQUIRED: Screwdriver, 11/32 wrench, socket or spintite, a 7/16" and 1/2" wrench or socket, tape measure.



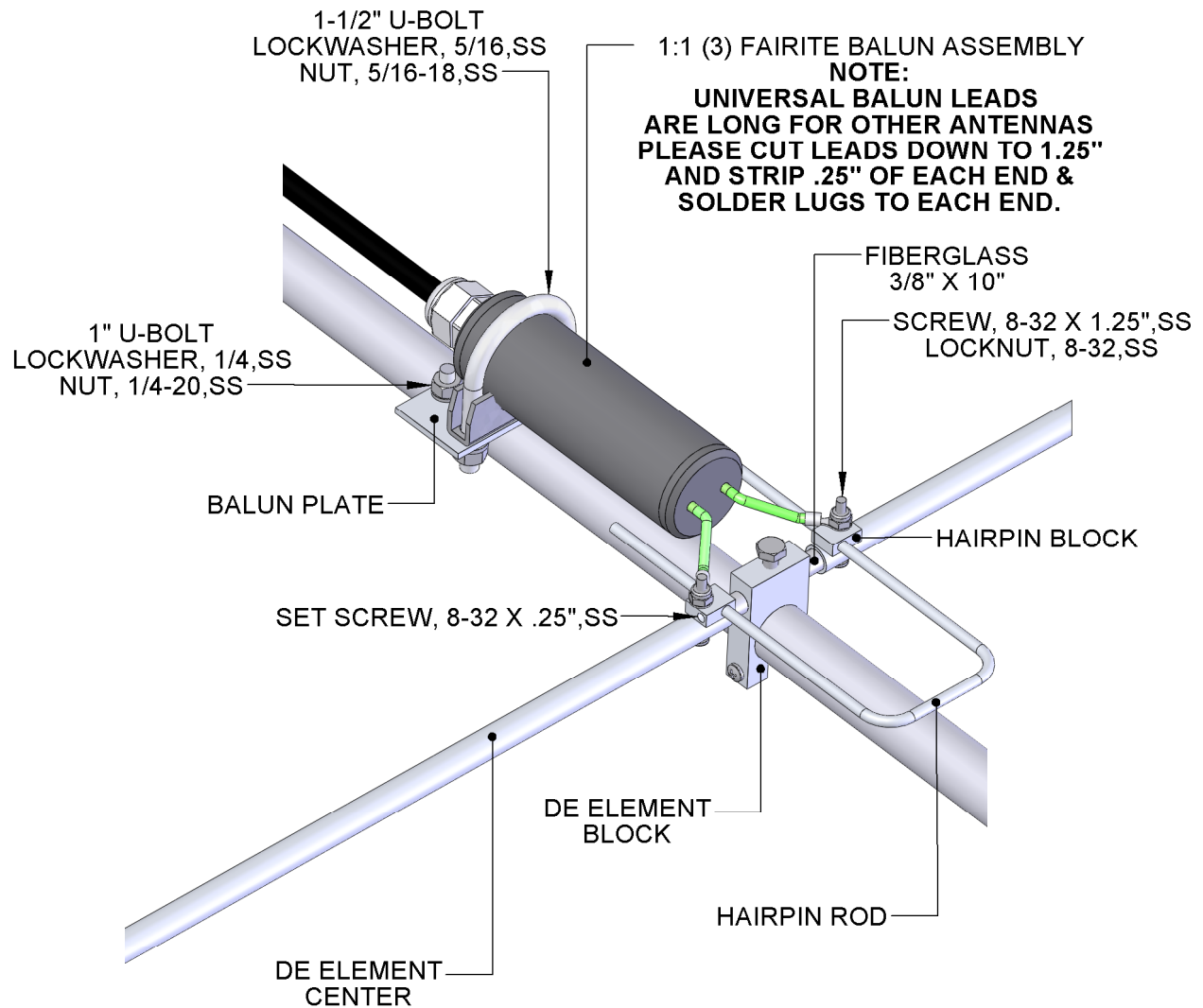
****Please be sure to slip Element Clamp Blocks on to the boom before adding the next boom section****

6M5XHG TRAVEL INSTALLATION TIPS

1. We recommend to pre-assemble the antenna at home and color code using the "Resistor Color Code Scheme". Color coding your antenna will help you assemble the antenna quicker and more efficiently without the hassles of measuring when taken on trips.
2. For travel purpose we have supplied two additional, Screws 8-32 X 1/2" to hold the hairpin inside the D.E. Hairpin Block if you chose not to use the supplied Set Screw 8-32 X 1/4" on trips.
3. On a trip, this antenna may be pre-assembled in a limited space area or indoors. Each element can be assembled prior to your complete system installation in the field (see picture below). When elements have been completely assembled and marked, you may loosen compression clamps and slide element tips as far in as possible for easy mobility of assembled elements. When ready to install the complete system, slide pre-assembled elements to the main crossboom & match up with pre-color coded areas on the boom, loosen compression clamps & slide the 3/8" tips back out to marked areas.
4. For home installations we recommend for all screws and joints to be coated with conductive paste or penetroz / zinc paste for easy disassembly at a later date if you wish to take on a trip.



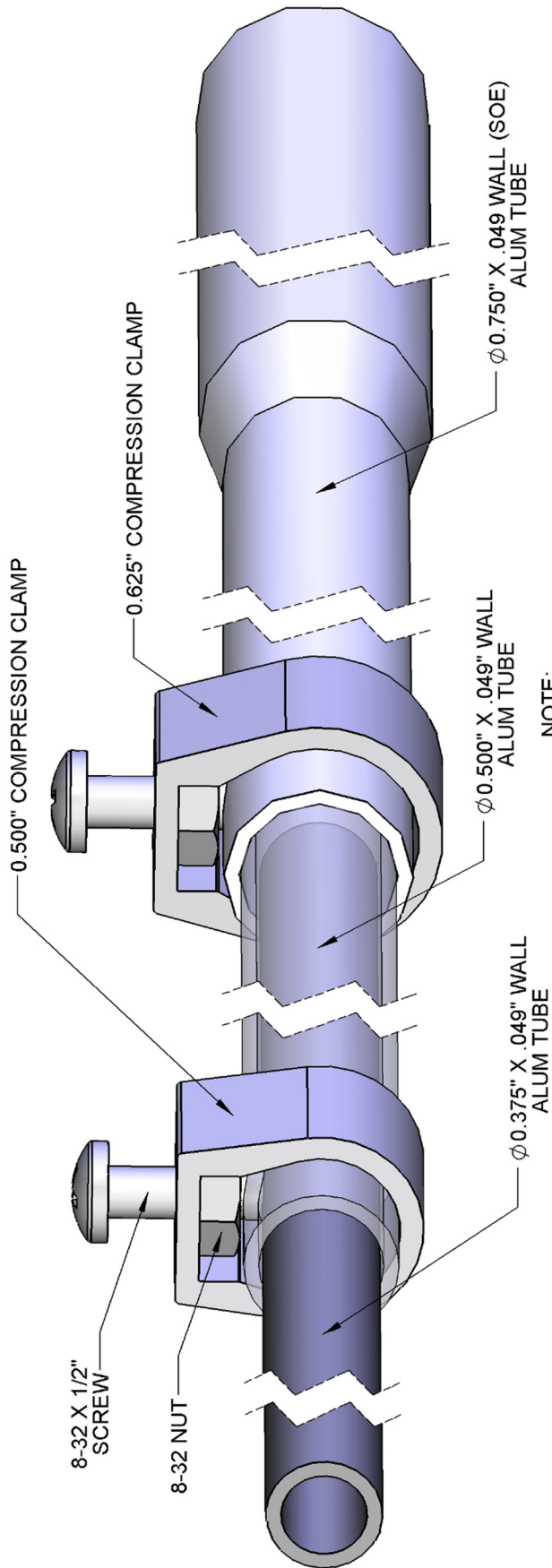
6M5XHG BALUN DETAIL



NOTE:
FOR STACKING
PLEASE LOOK FOR PHASING DOTS
ABOVE ONE LEAD.
FOR MORE STACKING INFORMATION
PLEASE CALL THE FACTORY.

M² ANTENNA SYSTEMS, INC.
4402 N. SELLAND AVE.
FRESNO, CA 93722
(559) 432-8873 FAX: 432-3059
www.m2inc.com Email: sales@m2inc.com

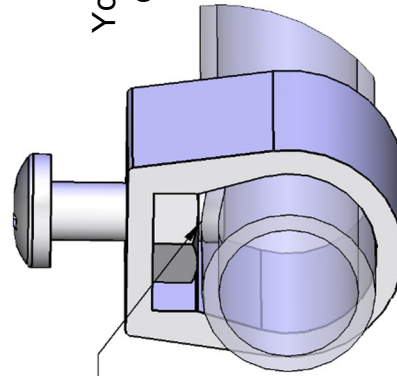
GENERIC COMPRESSION CLAMP DETAIL



NOTE:
TUBES SHOWN TRANSPARENT
TO SHOW MORE DETAIL

NOTE:

Generic layout to show
how compression clamps work.
Your antenna may have one or the other
or may even have both compression
clamp sizes.



NOTE:
8-32 X 1/2" SCREW
PRESSES ON INNER TUBE

NOTE: INSIDE TUBE NOT SHOWN FOR CLARITY

6M5XHG PARTS & HARDWARE

DESCRIPTION.....	QTY
BOOM SECTION #1 & #6: 1" X .058 X 40"	2
BOOM SECTION #2 & #5: 1.25" X .058 X 44" SOE	2
BOOM SECTION #3: 1.5" X .058 X 45" SBE	1
BOOM SECTION #4: 1.5" X .058 X 45" SOE	1
ELEMENT CENTER, .50" X .049 X 40" (M2AEP0070)	4
DE ELEMENT CENTER, .50" X .049 X 19" (M2AEP0071)	2
ELEMENT TIPS 3/8", .375" X .049 X SEE CHART	10
FIBERGLASS DE CENTER, .375" X 10" (M2AFG0015).....	1
DE CLAMP BLOCK 1", 1.25" X .500 X 2.126" (M2ADE0090)	1
ELEMENT CLAMP BLOCK 1", 1.25" X .625 X 2.126" (M2AEC0101)	2
ELEMENT CLAMP BLOCK 1-1/4", 1.50" X 2.375" (M2AEC0104)	1
ELEMENT CLAMP BLOCK 1-1/2", 1.75" X 2.610" (M2AEC0108)	1
DE HAIRPIN BLOCK, .50" X .250 X .625" (M2ADP0620)	2
HAIRPIN ROD 3/16"	1
BALUN PLATE, .125" X 1.5" X 3" (M2APT0013)	1
BOOM TO MAST PLATE, 4" X .1875 X 6" (M2APT0022).....	1
(3) FAIRITE 1:1 VHF BALUN ASSEMBLY (FGBL0800)	1
PENETROX / ZINC PASTE CUP	1
ASSEMBLY MANUAL	1

HARDWARE:

COMPRESSION CLAMP, 1/2"	10
U-BOLT AND CRADLE, 2"	2
U-BOLT AND CRADLE, 1-1/2"	3
U-BOLT, 1"	1
LOCKWASHER, 5/16, SS	10
NUT, 5/16-18, SS	10
BOLT, 1/4-20 X 1/2", SS	9
LOCKWASHERS, 1/4, SS	2
NUT, 1/4-20, SS	2
SCREW, 8-32 X 2", SS	1
SCREW, 8-32 X 1-3/4", SS	7
SCREW, 8-32 X 1-1/2", SS	7
SCREW, 8-32 X 1-1/4", SS	2
SCREW, 8-32 X 1/2", SS	12
SET SCREW, 8-32 X 1/4", SS	2
NUT, 8-32, SS	10
LOCKNUT, 8-32, SS	17
ALLEN HEAD WRENCH, 5/64"	1

M² ANTENNA SYSTEMS, INC.

4402 N. SELLAND AVE.

FRESNO, CA 93722

(559) 432-8873 FAX: 432-3059

www.m2inc.com Email: sales@m2inc.com