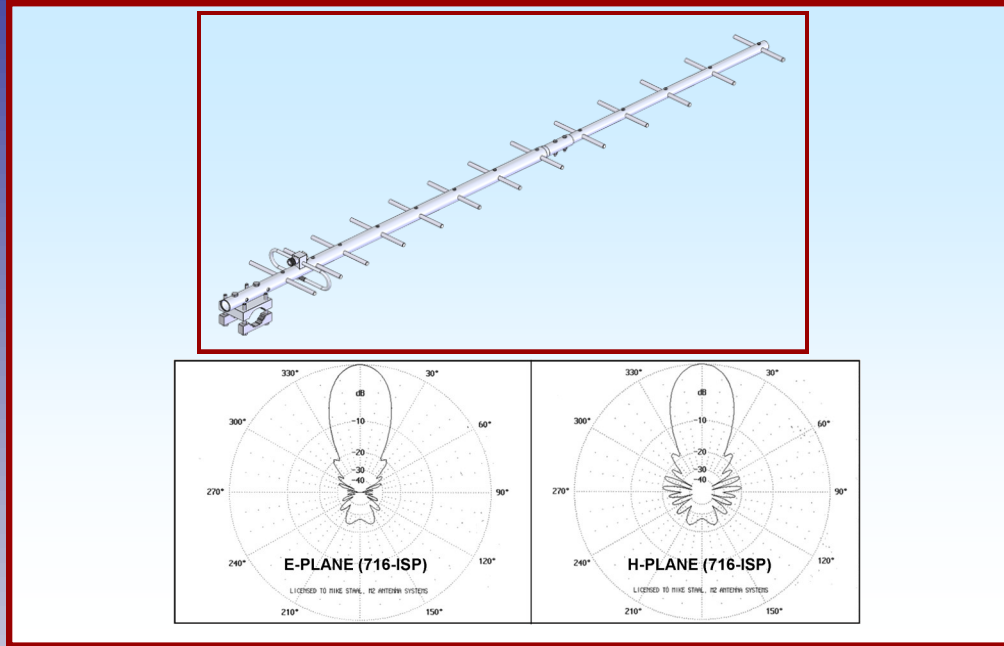




M2 Antenna Systems, Inc.

Model No: 716ISPA



SPECIFICATIONS:

Model	716ISPA	Stacking Distance.....	30"
Frequency Range	698-755 MHz	Mast Size.....	1-1/4" to 2"
*Gain.....	16.0 dBi	Wind area / Survival	(.6) SQ FT./100MPH
Front to back.....	23 dB	Weight / Ship Wt.....	6 LBS.
Feed Impedance.....	50 Ohms		
VSWR.....	1.2:1 Typical		
Input Connector	"N" Female		
Polarity.....	VERT / HORZ		
Power Handling	500 Watts		
Boom Length / Dia	70" / 1" / 3/4"		

***Subtract 2.14 from dBi for dBd**

FEATURES:

The **716ISPA** has been engineered for DEEP FRINGE AREA systems where standard panels or smaller Yagi's are not sufficient. High performance and dependability mean less service calls, keeping customers happy and profit margins higher. Stacking and phasing kits are available when higher gain and more directivity is required to eliminate interference or punch through obstructions.

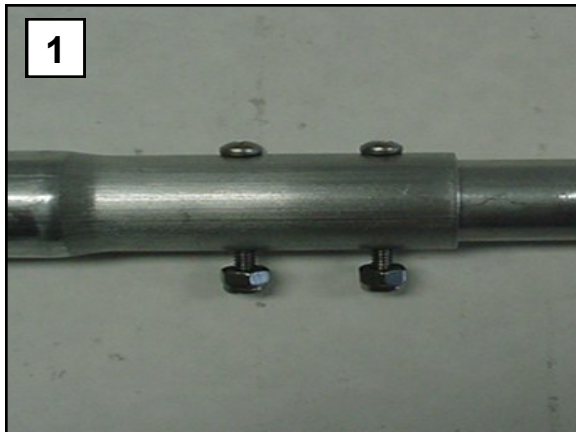
The heart of the **716ISPA**, the folded dipole, provides a virtual flat match for over 50 MHz. The gain has been designed to roll-off quickly above range limits to prevent receiver overload from high power services above 750 MHz. The heavy duty one piece boom and 5/16" elements, give the ISP confidence for superior performance and longevity.

Originally designed for the lower commercial services band from 698-746 MHz (CH52-CH59). The product can be adapted for the upper commercial services bands including 746-763 MHz (CH60-CH62) and 776-788 MHz (CH65-CH66). Future designs are being looked at for the lower public safety band covering 763-775 MHz (CH63-CH64) and the upper public safety bands 793-805 MHz (CH68-CH69). If you are in need of a custom design in the 700 MHz band, please give us a call so we can help you with your requirements.

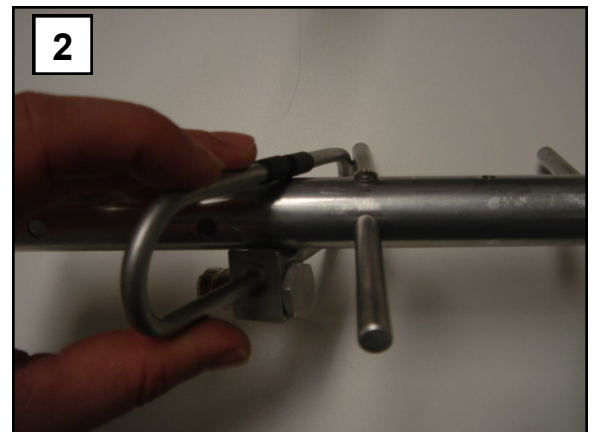
716ISPA ASSEMBLY MANUAL

GETTING STARTED

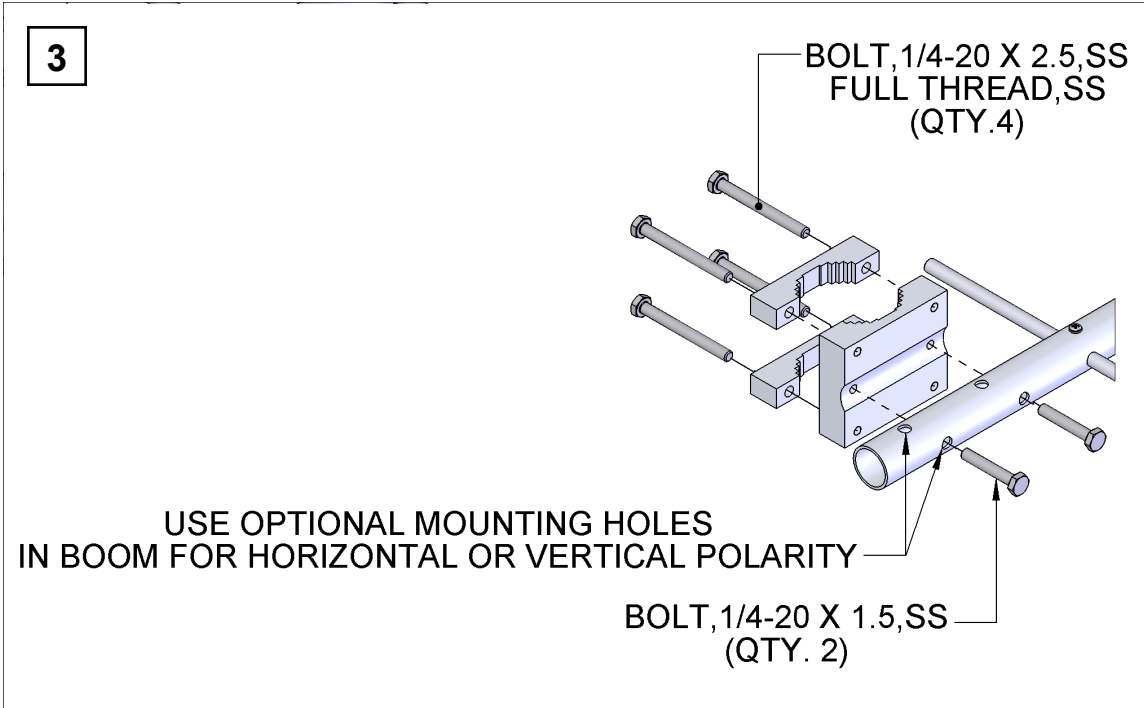
Tools handy for assembly process: Phillips head screwdriver, 11/32" spin-tite or socket, 7/16" end wrench or socket. The elements of the antenna are pre-assembled from the factory.



Step 1:
Attach boom section #1 to #2 using 8-32 x 1 1/4" and locknuts supplied



Step 2:
Attach the folded dipole to the rear of the boom section by sliding the unit back and forth until it is in place. Use a 8-32 x 1 1/4" screw.



THIS COMPLETES THE ASSEMBLY OF THE 716A-ISP

716ISPA PARTS & HARDWARE

DESCRIPTION	QTY
716ISPA BOOM ASSEMBLY.....	1
FOLDED DIPOLE ASSEMBLY	1
ASSEMBLY MANUAL.....	1

IN HARDWARE BAGS:

UNI-CRADLE, (M2AMC0075).....	1
UNI-CRADLE, (M2AMC0076).....	2
BOLT, 1/4-20 X 2-1/2", FULL THREAD, SS.....	4
BOLT, 1/4-20 X 1-1/2", SS	2
SCREW, 8-32 X 1-1/4", SS	3
NUT, 8-32 NYLOCK.....	2

Carefully Manufactured by:

M² ANTENNA SYSTEMS, INC.

4402 N. SELLAND AVE.

FRESNO, CA 93722

(559) 432-8873 FAX: 432-3059

www.m2inc.com Email: sales@m2inc.com