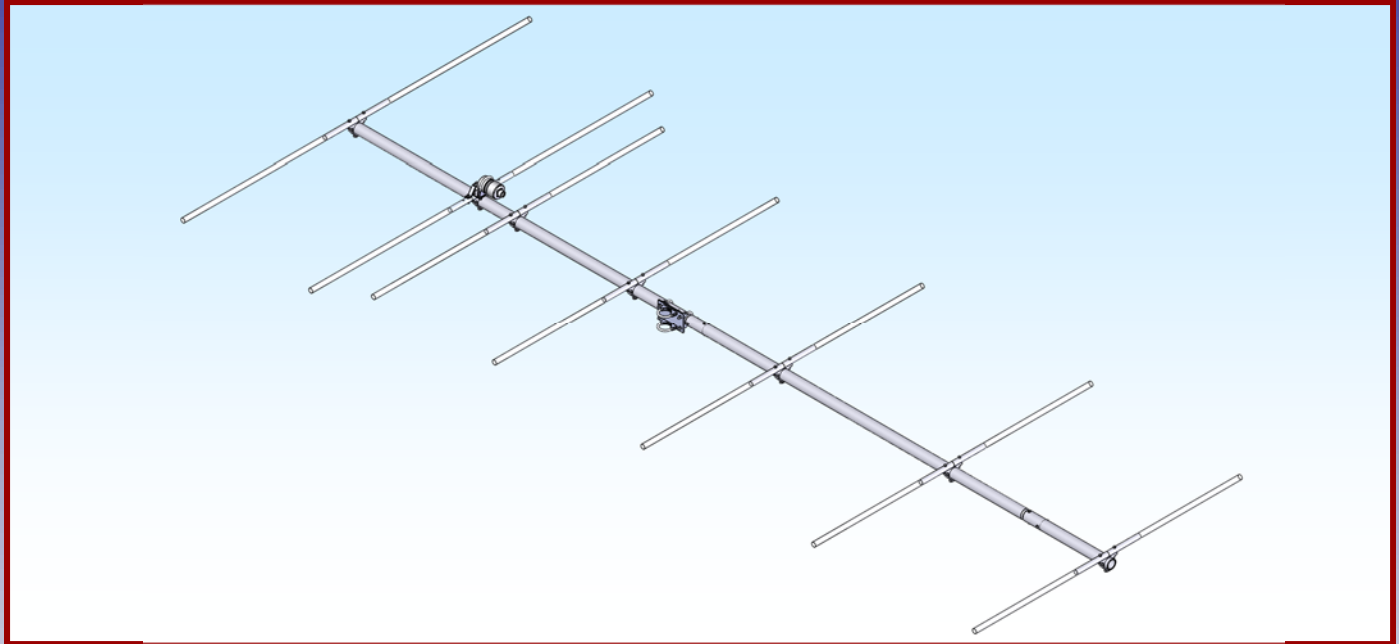




M2 Antenna Systems, Inc. Model No: 75-7BB



SPECIFICATIONS:

Model	75-7BB	Power Handling	5 kW
Frequency Range.....	70 To 80 mHz	Boom Length / Dia.....	180" / 2"
*Gain, (FS)	10.5 dBi	Maximum Element Length.....	82.25"
Front to back	20 dB Typical	Turning Radius:	103"
Beamwidth	E=50° H=60°	Stacking Distance.....	30' High & 30' Wide
Feed type	Direct feed	Mast Size.....	2" Nom.
Feed Impedance.	50 Ohms Unbalanced	Wind area / Survival	4.3 Sq. Ft. / 100 MPH
Maximum VSWR.....	>1.5:1	Weight / Ship Wt.....	23 Lbs. / 28 Lbs.
Input Connector.....	7/16 DIN Female		

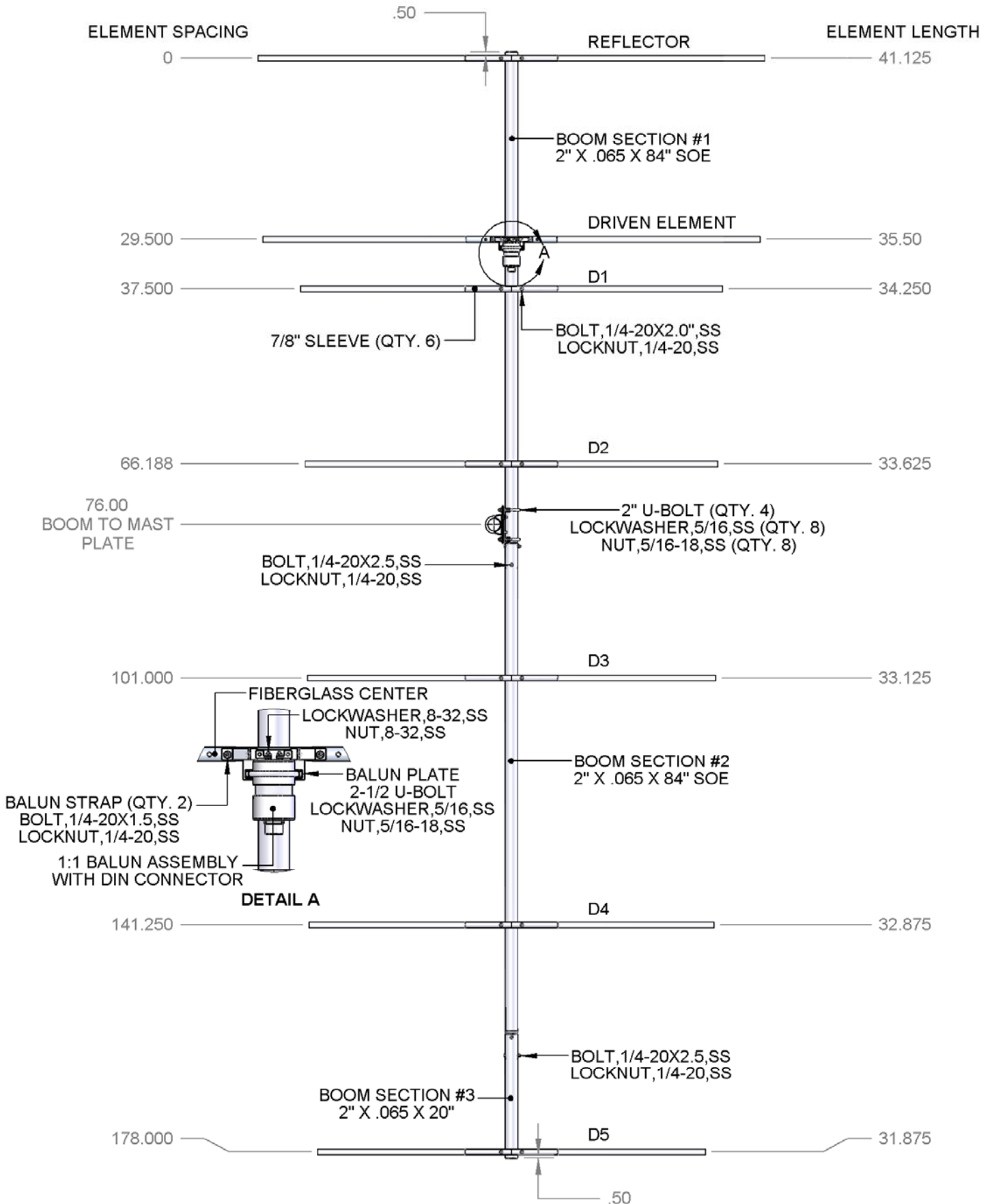
***Subtract 2.14 from dBi for dBd / FS = Free Space**

FEATURES:

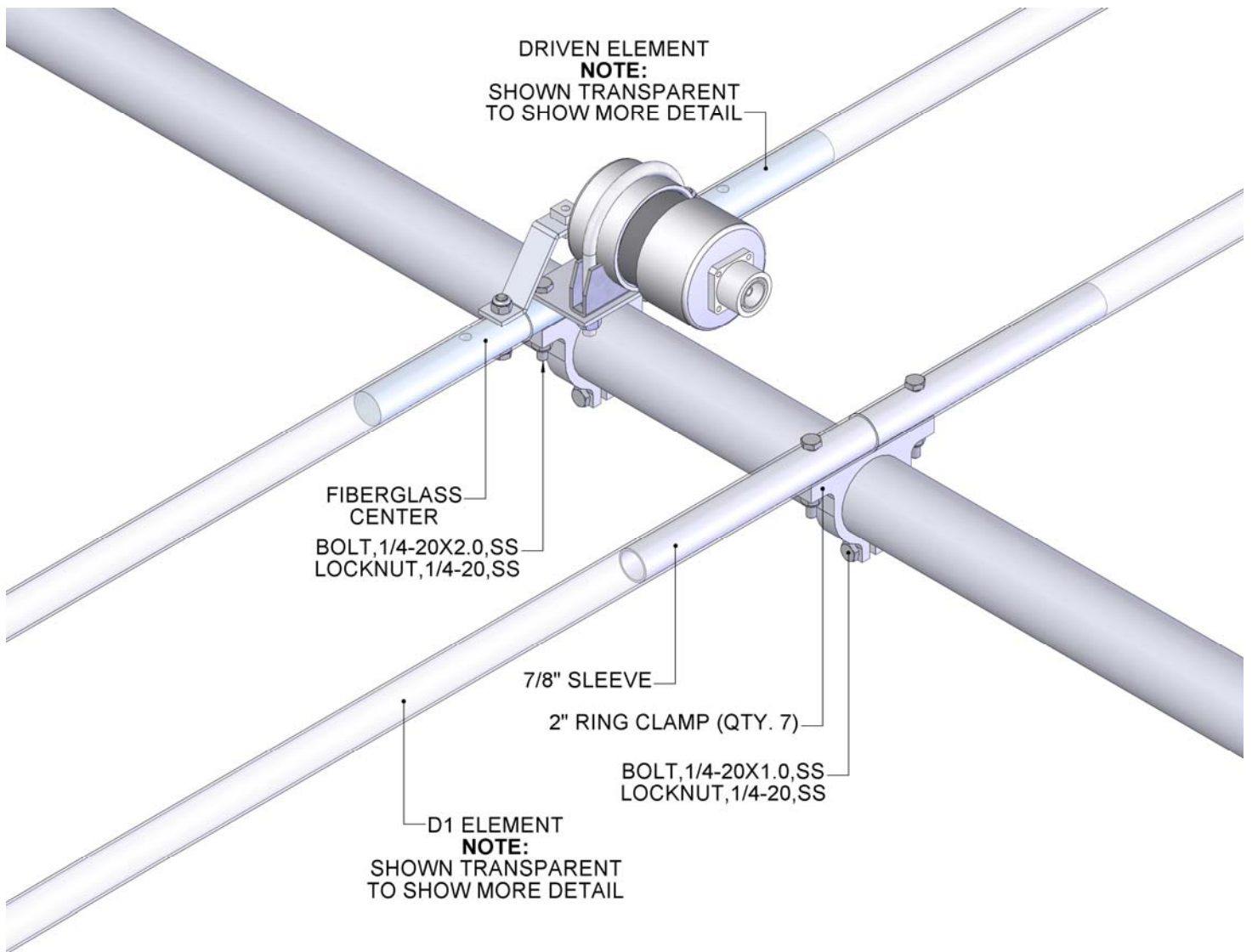
The 75-7BB features broad band width performance with usable VSWR from 70-80 mHz. M2 uses its rugged CNC machined 6061-T6 ring clamp design for element mounting and large 2" diameter boom. All hardware except for the U-Bolts is stainless steel. A hairpin type match couples the 5 kW 1:1 balun to the feedline. Higher power available. The antenna is completely DC grounded.

75-7BB DIMENSION SHEET

TOOLS REQUIRED: Screwdriver, 11/32 wrench, socket or spintite, a 7/16" and 1/2" wrench or socket, tape measure.



75-7BB DRIVEN ELEMENT DETAIL



M² ANTENNA SYSTEMS, INC.

4402 N. SELLAND AVE.

FRESNO, CA 93722

(559) 432-8873 FAX: 432-3059

www.m2inc.com Email: sales@m2inc.com

75-7BB PARTS & HARDWARE

DESCRIPTION.....	QTY
BOOM SECTION #1: 2.0" X .065 X 84" SOE	1
BOOM SECTION #2: 2.0" X .065 X 84" SOE	1
BOOM SECTION #3: 2.0" X .065 X 20" SOE.....	1
ELEMENT SECTION, 1" X .058 X SEE SHEET	12
DRIVEN ELEMENT SECTION, 1" X .058 X 35.500"	2
ELEMENT SLEEVE, 7/8" X .058 X 15"	6
FIBERGLASS DE CENTER, 7/8" X 14.75" (SPECIAL).....	1
HAIRPIN BLOCK & STRAP ASSEMBLY (LEFT).....	1
HAIRPIN BLOCK & STRAP ASSEMBLY (RIGHT)	1
RING CLAMP 2".....	7
BALUN PLATE, 2" X .125 X 4.0".....	1
BOOM TO MAST PLATE, 4" X .125 X 6"	1
1:1 BALUN ASSEMBLY WITH STUDS & DIN CONNECTOR	1
PENETROX / ZINC PASTE CUP	1
ASSEMBLY MANUAL	1

HARDWARE:

U-BOLT AND CRADLE, 2-1/2"	1
U-BOLT AND CRADLE, 2"	4
LOCKWASHER,5/16,SS	10
NUT,5/16-18,SS	10
BOLT,1/4-20X2.5,HEX HD,SS	4
BOLT,1/4-20X2.0,HEX HD,SS	14
BOLT,1/4-20X1.50,HEX HD,SS	2
BOLT,1/4-20X1.0,HEX HD,SS	7
LOCKNUT,1/4-20,SS	27
LOCKWASHER,8-32,SS.....	2
NUT,8-32,SS.....	2

M² ANTENNA SYSTEMS, INC.

4402 N. SELLAND AVE.

FRESNO, CA 93722

(559) 432-8873 FAX: 432-3059

www.m2inc.com Email: sales@m2inc.com