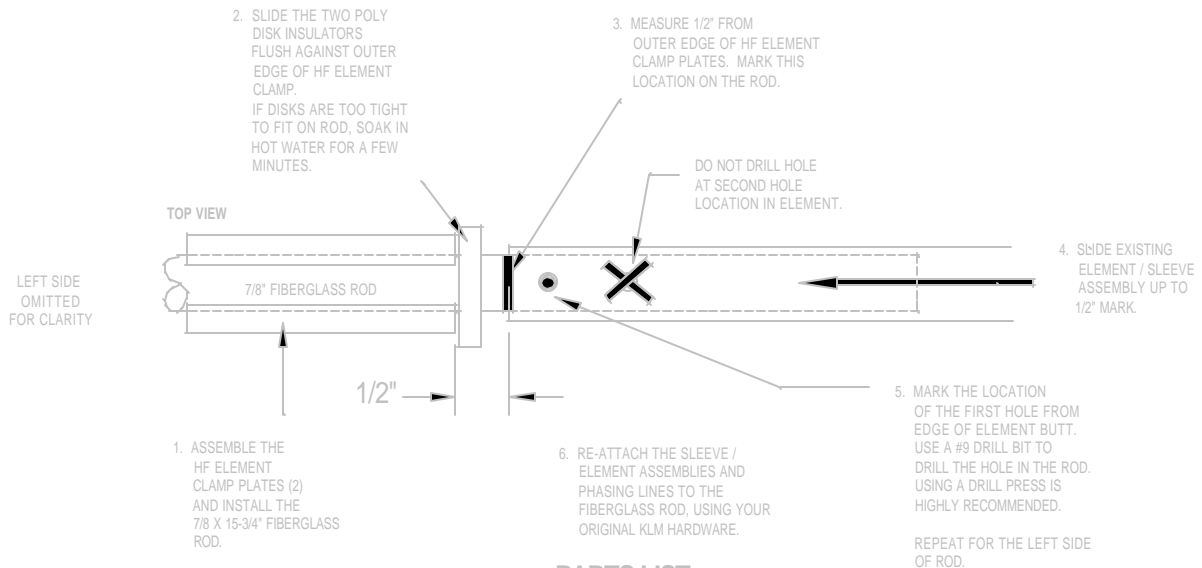
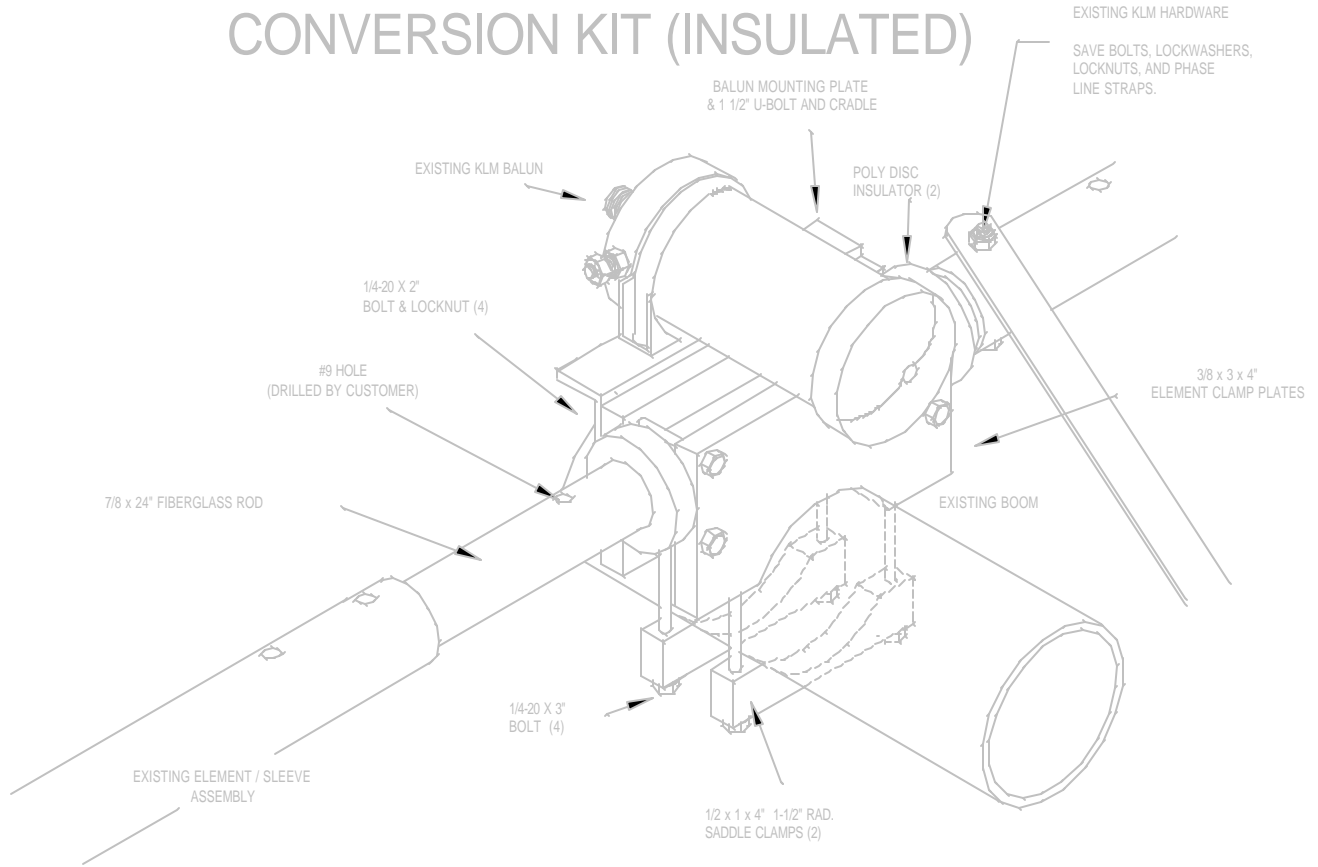


KLM TO M2 KT34 AND KT34XA ELEMENT TO BOOM CLAMP CONVERSION KIT (INSULATED)



PARTS LIST

ITEM	QTY.	ITEM	QTY.
FIBERGLASS ROD, 7/8 x 15-3/4"	1	BOLT, ss, 1/4-20 x 3"	4
HF ELEMENT CLAMP, 3/8 x 3" x 4"	2	BOLT, ss, 1/4-20 x 2"	4
SADDLE CLAMP, 1/2 X 1 x 4", w/3" RAD.	2	LOCKNUTS, ss, 1/4-20	4
POLY DISC INSULATOR, 7/8" I.D.	2	WASHER, ss, 5/16 SP	2
BALUN MT. PLATE, 1/8" X 4"	1	NUT, ss, 5/16-18	2
U-BOLT, 1-1/2"	1		