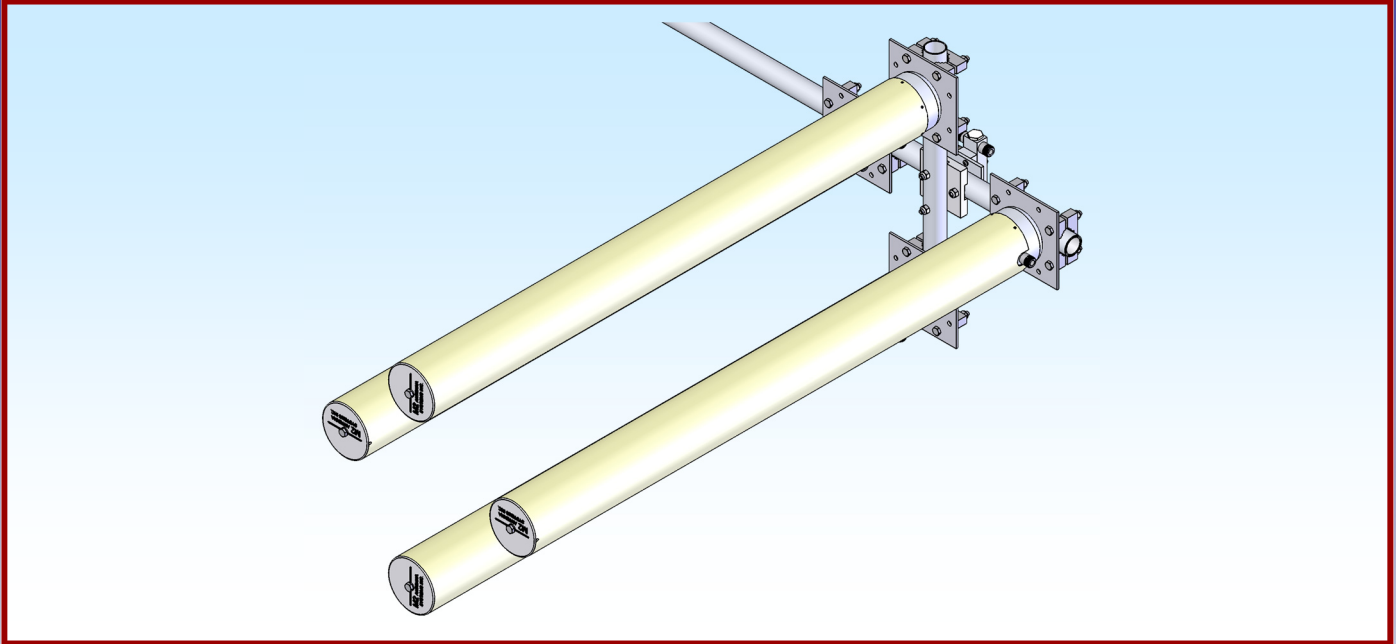




M2 Antenna Systems, Inc. Model No: 2227-21X4CP



SPECIFICATIONS:

Model	2227-21X4CP	Input Connector	"N" Female
Frequency Range	2210 To 2245 mHz	System Polarity	RHC
Usable Range	2200-2255 mHz	Power Handling	500 Watts
System*Gain	21.1 dBic	Boom Length / Dia	39"
Front to back	25 dB Typical	Stacking Distance	12.5"
Beamwidth	E=13° H=13°	Mast Size.....	1-1/4" to 2"
Feed type	Horn	Wind area / Survival	4 Sq. Ft. / 100MPH
Feed Impedance.....	50 Ohms Unbalanced	Weight / Ship Wt.	13 Lbs. / 15 Lbs.
VSWR	1.2:1 Typical		

***Subtract 2.14 from dBi for dBd**

FEATURES:

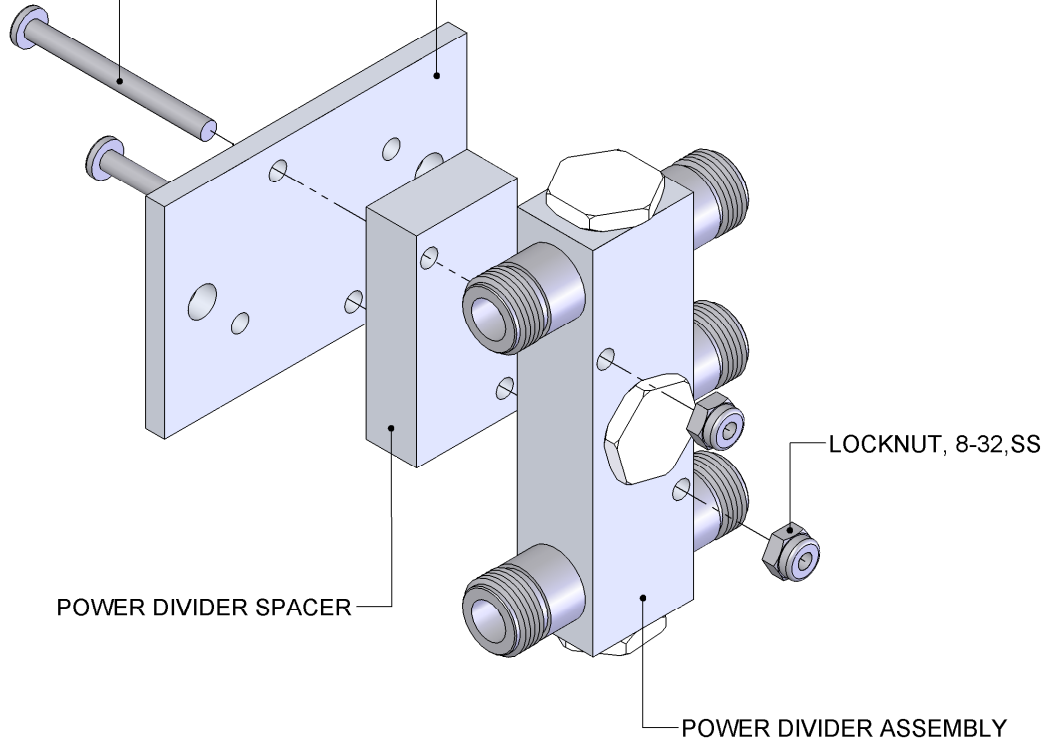
The **2227-21X4CP** is a high gain, Wave Guide Fed Yagi. Computer optimized for use in the 2210-2245 MHz band. Mechanically optimum computer calculations are held by CNC stamping out the director element structure. The low -loss Polyethylene Radome covers and adds to the strength of the antenna. Vertical or Horizontal polarization is achieved simply by rotating the antenna 90 degrees.

2227-21X4CP ASSEMBLY MANUAL

SCREW, 8-32 X 1.75",SS

1

POWER DIVIDER PLATE



2

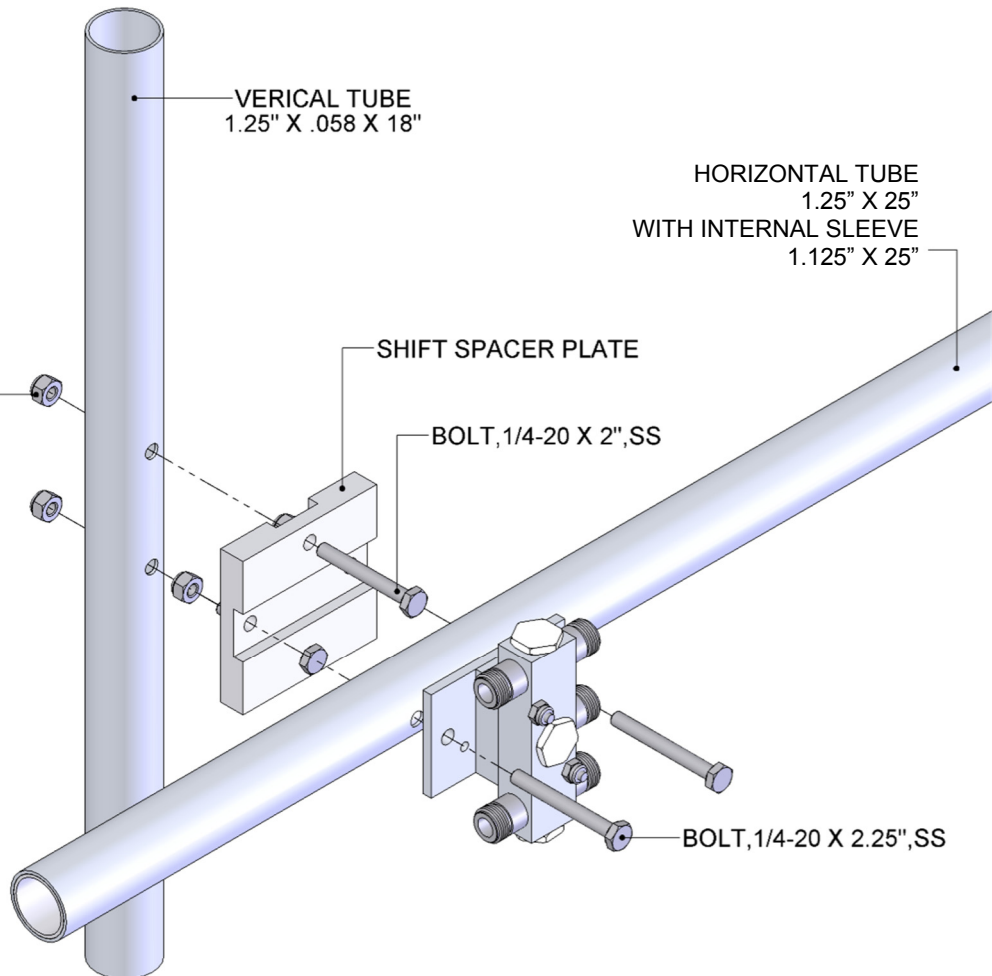
VERICAL TUBE
1.25" X .058 X 18"

HORIZONTAL TUBE
1.25" X 25"
WITH INTERNAL SLEEVE
1.125" X 25"

LOCKNUT, 1/4-20,SS

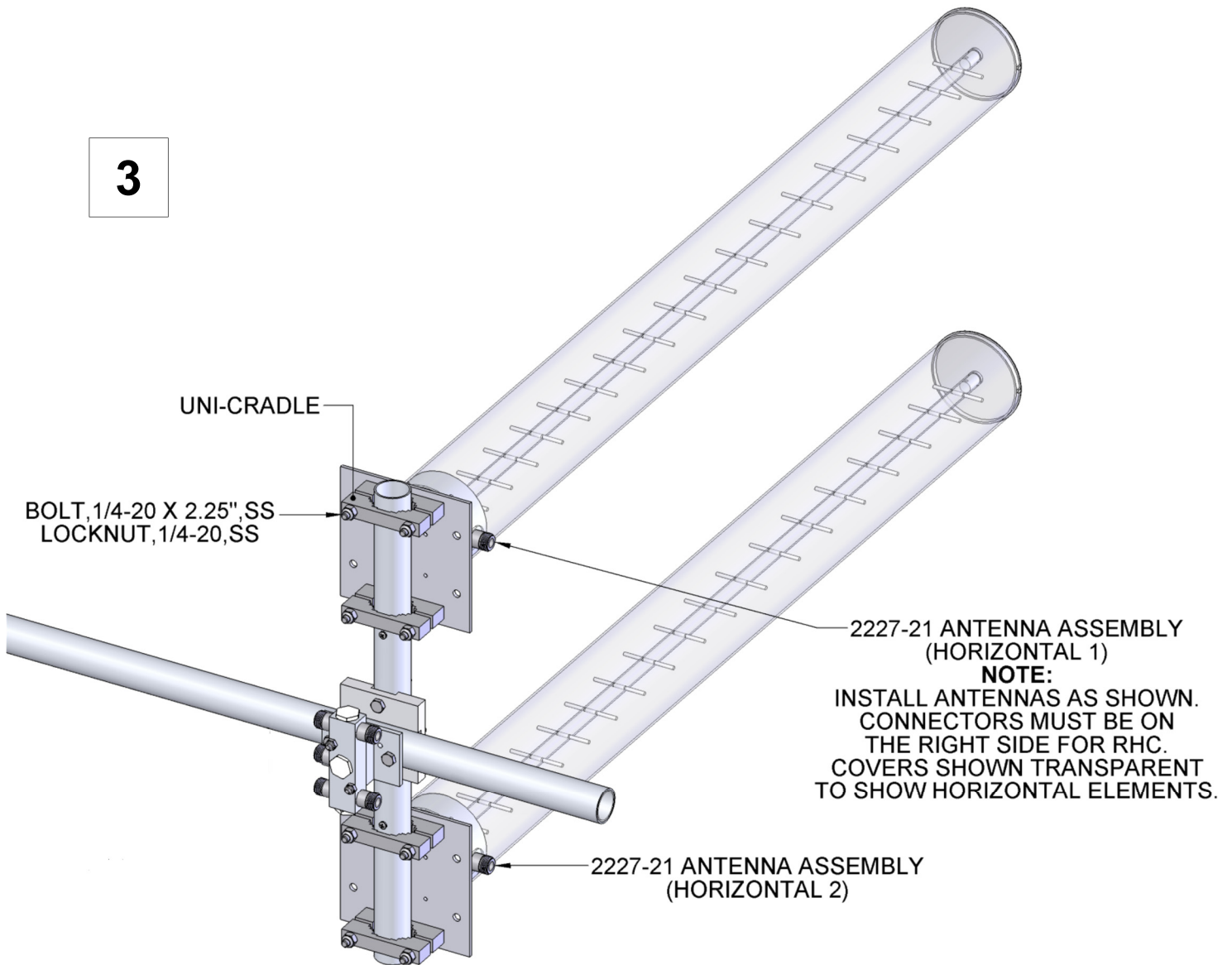
SHIFT SPACER PLATE

BOLT, 1/4-20 X 2",SS



2227-21X4CP ASSEMBLY MANUAL

3



2227-21X4CP ASSEMBLY MANUAL

4

NOTE:
HORIZONTAL ANTENNAS
NOT SHOWN FOR CLARITY

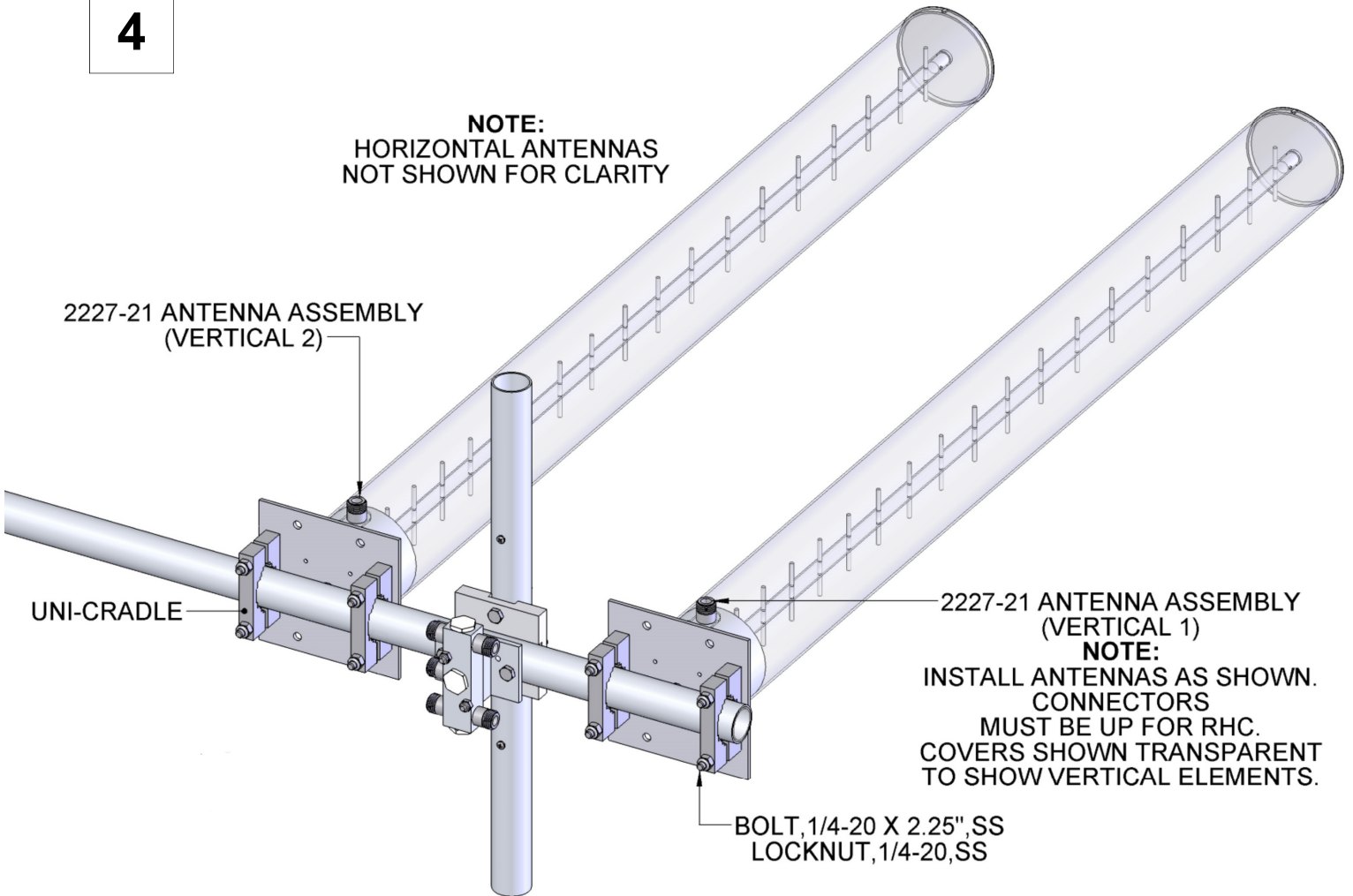
2227-21 ANTENNA ASSEMBLY
(VERTICAL 2)

UNI-CRADLE

2227-21 ANTENNA ASSEMBLY
(VERTICAL 1)

NOTE:
INSTALL ANTENNAS AS SHOWN.
CONNECTORS
MUST BE UP FOR RHC.
COVERS SHOWN TRANSPARENT
TO SHOW VERTICAL ELEMENTS.

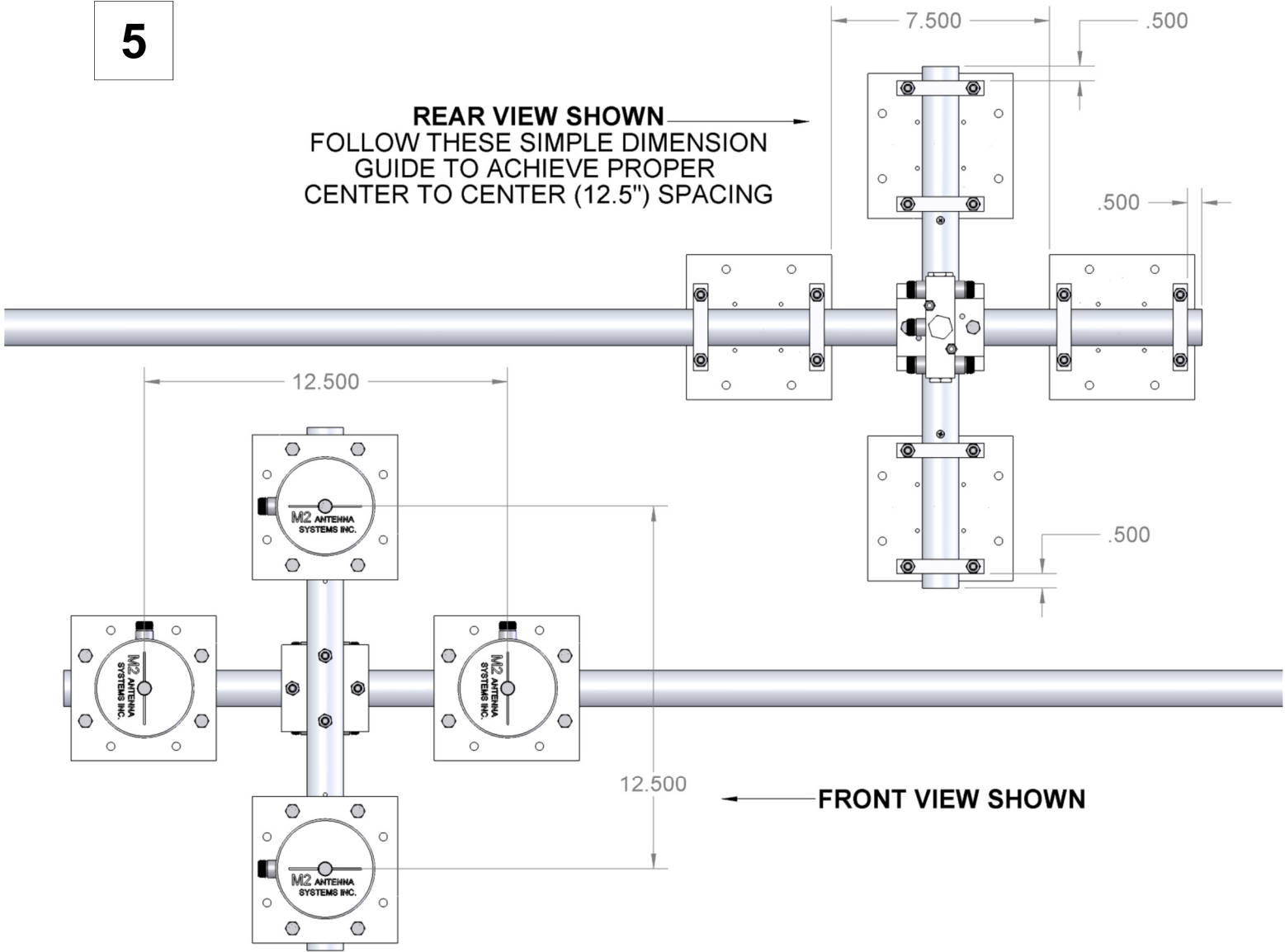
BOLT, 1/4-20 X 2.25", SS
LOCKNUT, 1/4-20, SS



2227-21X4CP ASSEMBLY MANUAL

5

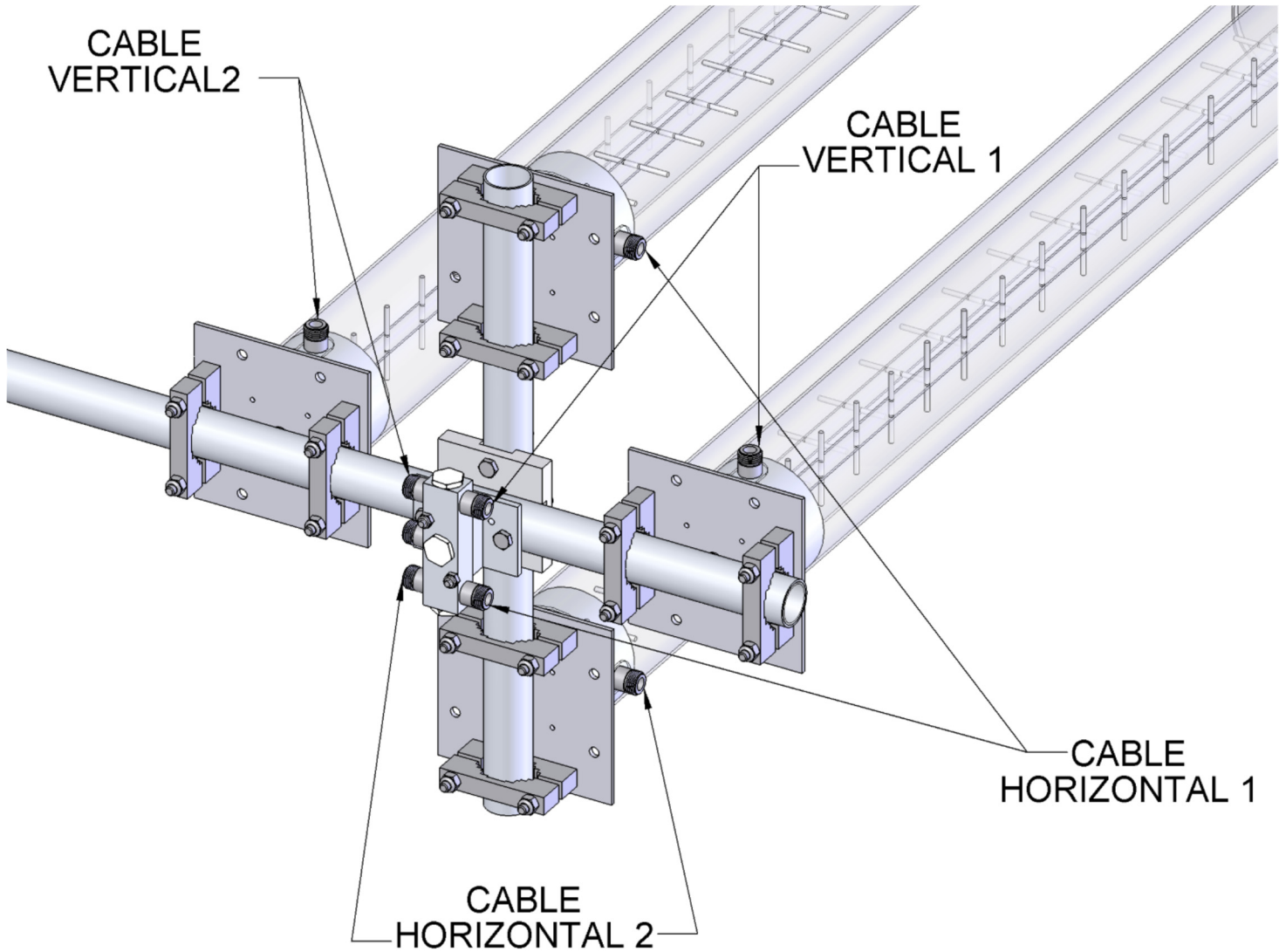
REAR VIEW SHOWN
FOLLOW THESE SIMPLE DIMENSION
GUIDE TO ACHIEVE PROPER
CENTER TO CENTER (12.5") SPACING



FRONT VIEW SHOWN

2227-21X4CP PHASING SYSTEM DETAIL

6



2227-21X4CP PARTS & HARDWARE

DESCRIPTION	QTY
2227-21 ANTENNA ASSEMBLY	4
2227-21 POWER DIVIDER ASSEMBLY	1
HORIZONTAL TUBE, 1.25" X 25"	1
HORIZONTAL TUBE SLEEVE, 1.125" X 25"	1
VERTICAL TUBE, 1.25" X 18"	1
SHIFT SPACER PLATE. 3" X .500 X 3"	1
POWER DIVIDER PLATE, 2" X .188 X 3"	1
POWER DIVIDER SPACER, 1" X .500 X 2"	1
PHASING CABLE.....	4
COUPLING TUBE, 1.5 X .058 X 6" ALUM	1
COUPLING TUBE, 1.375 X .058 X 6" ALUM.....	1
ASSEMBLY MANUAL	1

IN HARDWARE BAGS:

UNI-CRADLE, (M2AMC0076)	8
BOLT, 1/4-20 X 2.25", HEX HD, SS	18
BOLT, 1/4-20 X 2", HEX HD, SS	2
BOLT, 1/4-20 X 2.5 HEX HD, SS	2
LOCKNUT, 1/4-20,SS	6
SCREW, 8-32 X 1.75", PH PHL, SS.....	2
LOCKNUT, 8-32, SS	2

M² ANTENNA SYSTEMS, INC.

4402 N. SELLAND AVE.

FRESNO, CA 93722

(559) 432-8873 FAX: 432-3059

www.m2inc.com Email: sales@m2inc.com