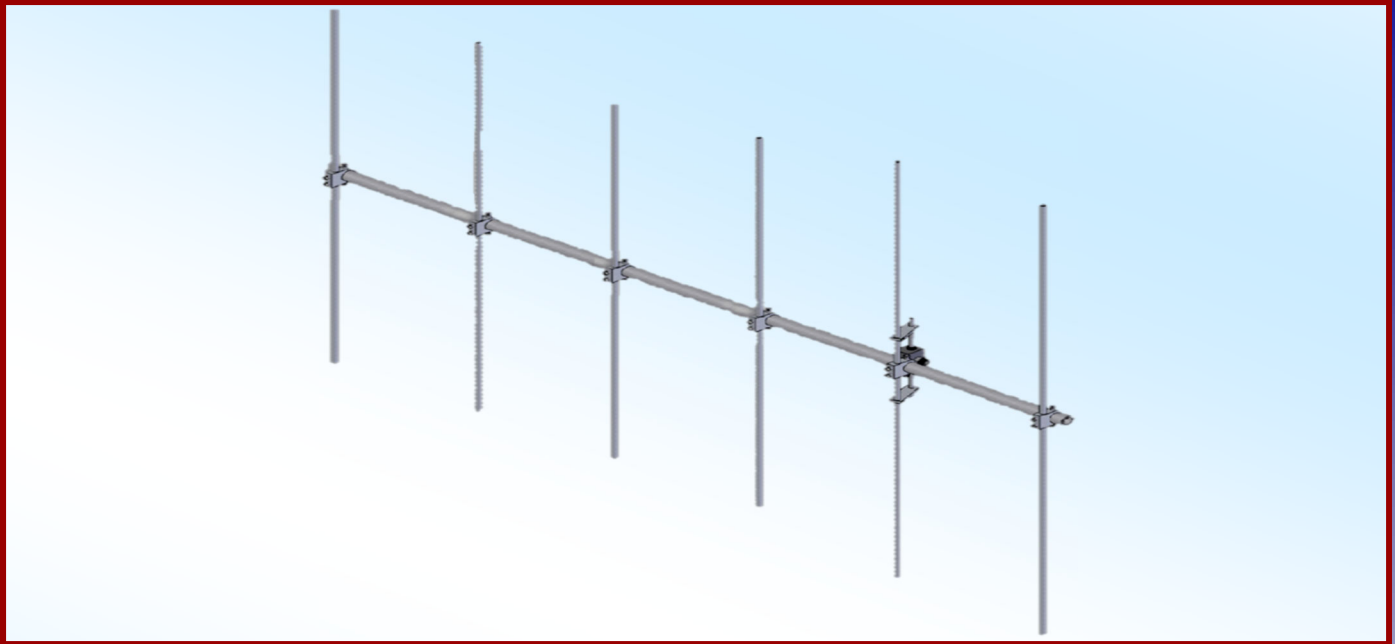




# M2 Antenna Systems, Inc. Model No: 107-6



### SPECIFICATIONS:

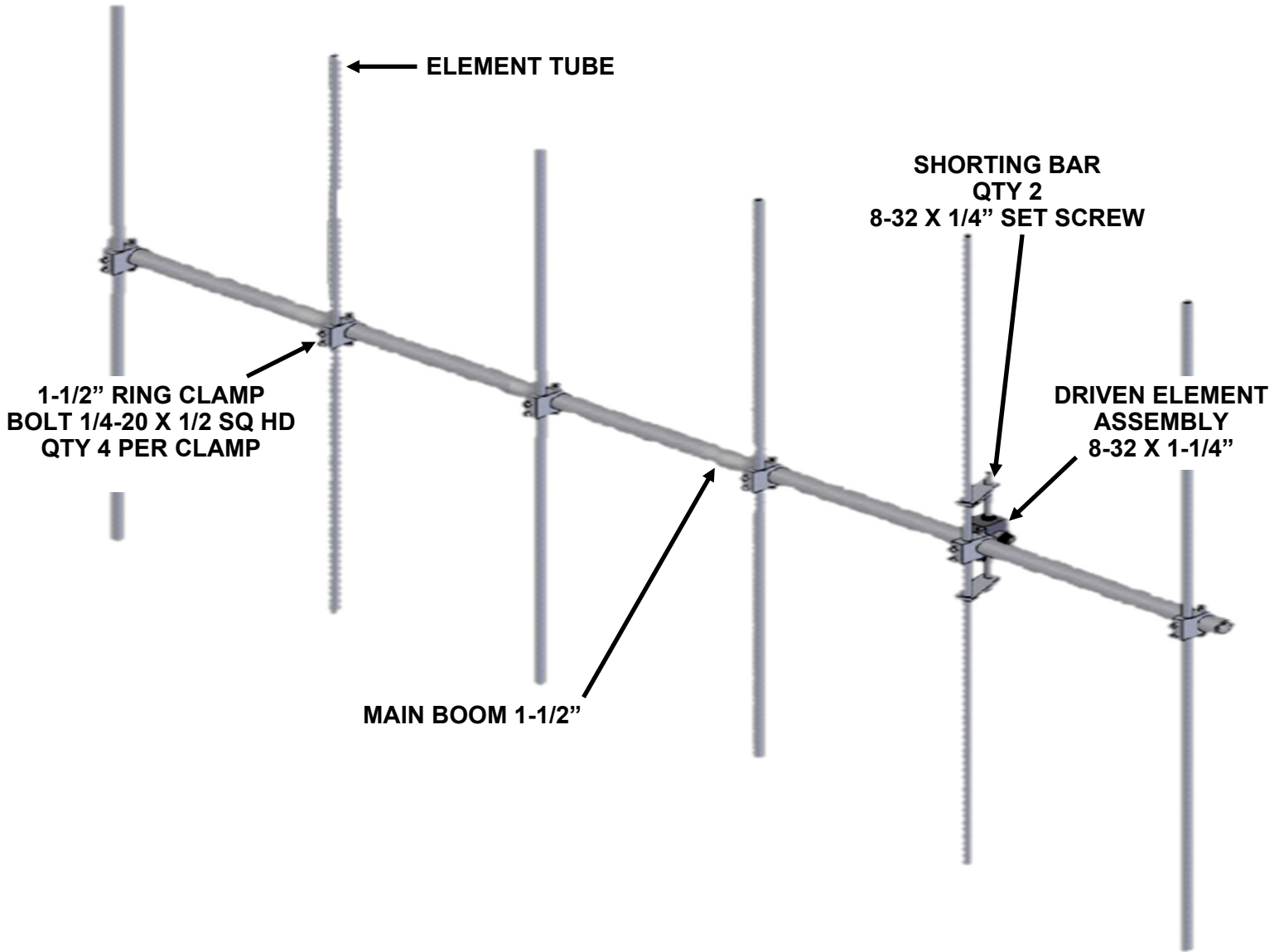
Model .....	107-6	Power Handling .....	1.5 kW
Frequency Range.....	106.5 to 108 MHz	Boom Length / Dia.....	146" / 1-1/2"
*Gain, (FS) .....	12.61 dBi	Maximum Element Length.....	55"
Front to back .....	22 dB Typical	Turning Radius: .....	Call
Feed type .....	Direct feed	Stacking Distance.....	Call
Feed Impedance .....	50 Ohms Unbalanced	Mounting.....	1-1/2" to 2" Nom.
Maximum VSWR.....	>1.5:1	Wind area / Survival .....	2.8 Sq. Ft. / 100 MPH
Input Connector.....	7/16 DIN Female	Weight / Ship Wt.....	14 Lbs. / 16 Lbs.

**\*Subtract 2.14 from dBi for dBd / FS = Free Space**

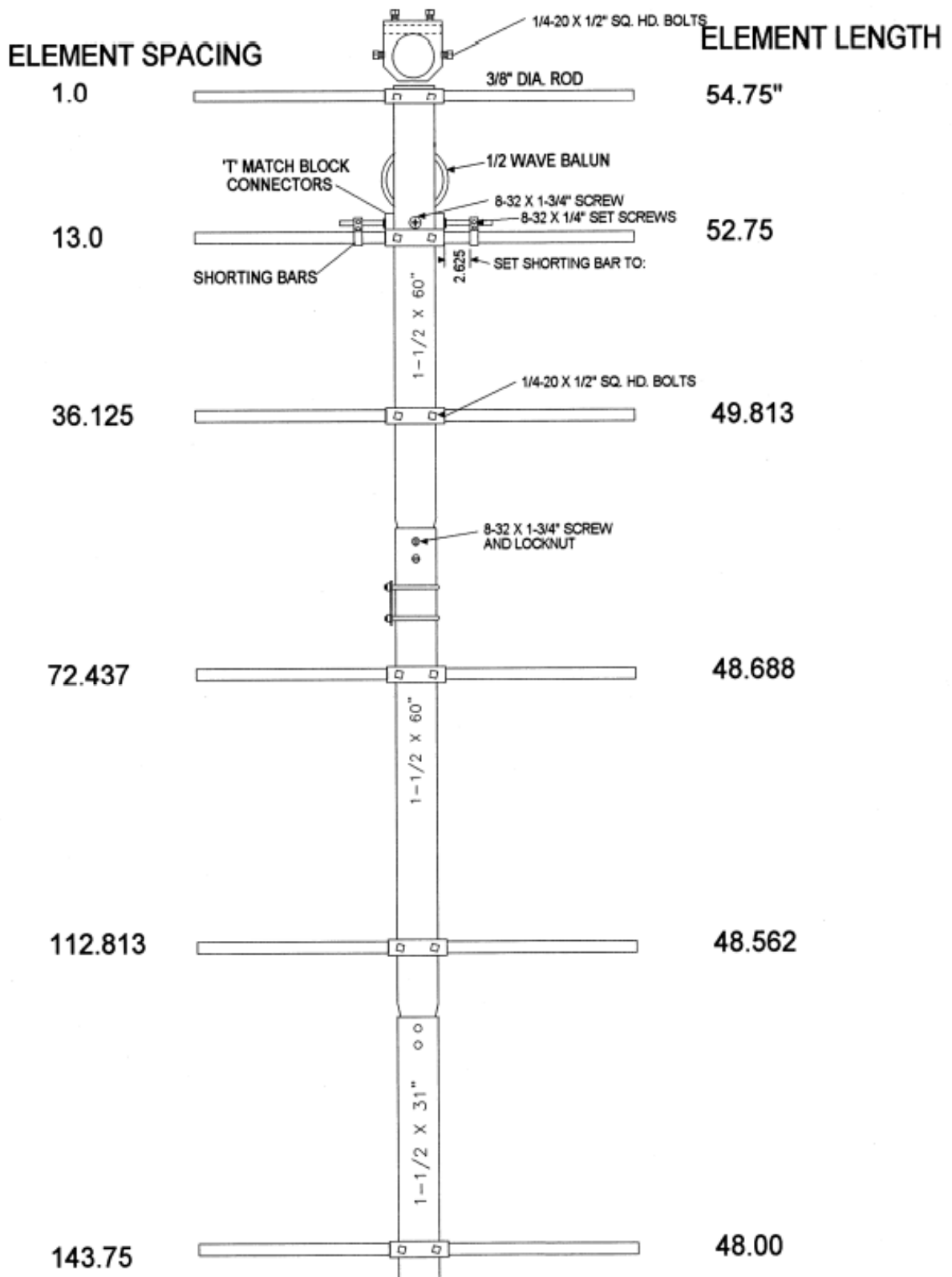
### FEATURES:

Performance has been computer optimized to meet your application. Physical construction emphasizes long term electrical and mechanical durability. Elements are 3/16" 6061-T6 aluminum rod, mounted through the boom on UV stabilized polyethylene button insulators, and locked in position with stainless steel shaft retainers. The "T" Match driven element, uses a CNC machined central block with O-ring sealed connectors. Internal connections are encapsulated in a silicone gel with a dielectric strength 3.7 times greater than air for enhanced power handling. Balun connectors are triple O-ring sealed to the coax.

# 107-6 ASSEMBLY MANUAL



# 107-6 DIMENSION SHEET



# 107-6 PARTS & HARDWARE

DESCRIPTION	QTY
BOOM SECTION, 1-1/2" X .058 X 60" SOE.....	2
BOOM SECTION, 1-1/2" X .058 X 31" STR.....	1
ELEMENT SET, 3/8" X SEE DIMENSION SHEET .....	6
DRIVEN ELEMENT ASSEMBLY .....	1
BALUN, RG-6.....	1
BOOM TO MAST PLATE, .188" X 4" X 6".....	1
RING CLAMP, 1-1/2".....	6
SHORTING BARS.....	2
U-BOLT AND CRADLE, 1-1/2".....	2
U-BOLT AND CRADLE, 2".....	2

## IN HARDWARE BAG

SCREW, 8-32 X 1-3/4" SS.....	5
NUT, NYLOCK 8-32 SS.....	4
SET SCREW, 8-32 X 1/4" SS.....	4
SET SCREW, SQUARE HEAD 1/4-20 X 1/2" SS .....	24
NUT, 5/16-18" SS.....	8
LOCKWASHER, 5/16" SPLIT RING SS.....	8
NUT SEAL, 3/8-32.....	2
ALLEN WRENCH, 5/64".....	1
NYLON TIE, 7".....	4

M2 ANTENNA SYSTEMS, INC.  
4402 N. SELLAND AVE.  
FRESNO, CA 93722  
(559) 432-8873 FAX: (559) 432-3059  
[www.m2inc.com](http://www.m2inc.com) Email: [sales@m2inc.com](mailto:sales@m2inc.com)