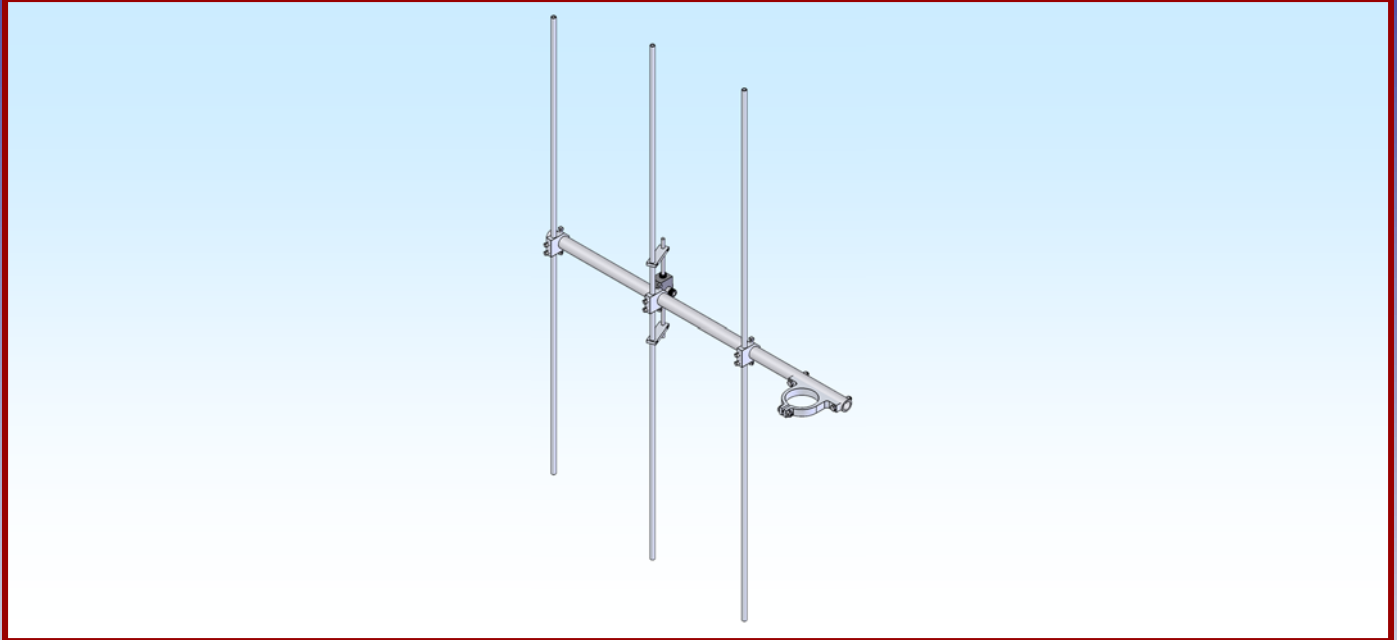




M2 Antenna Systems, Inc. Model No: 127-3



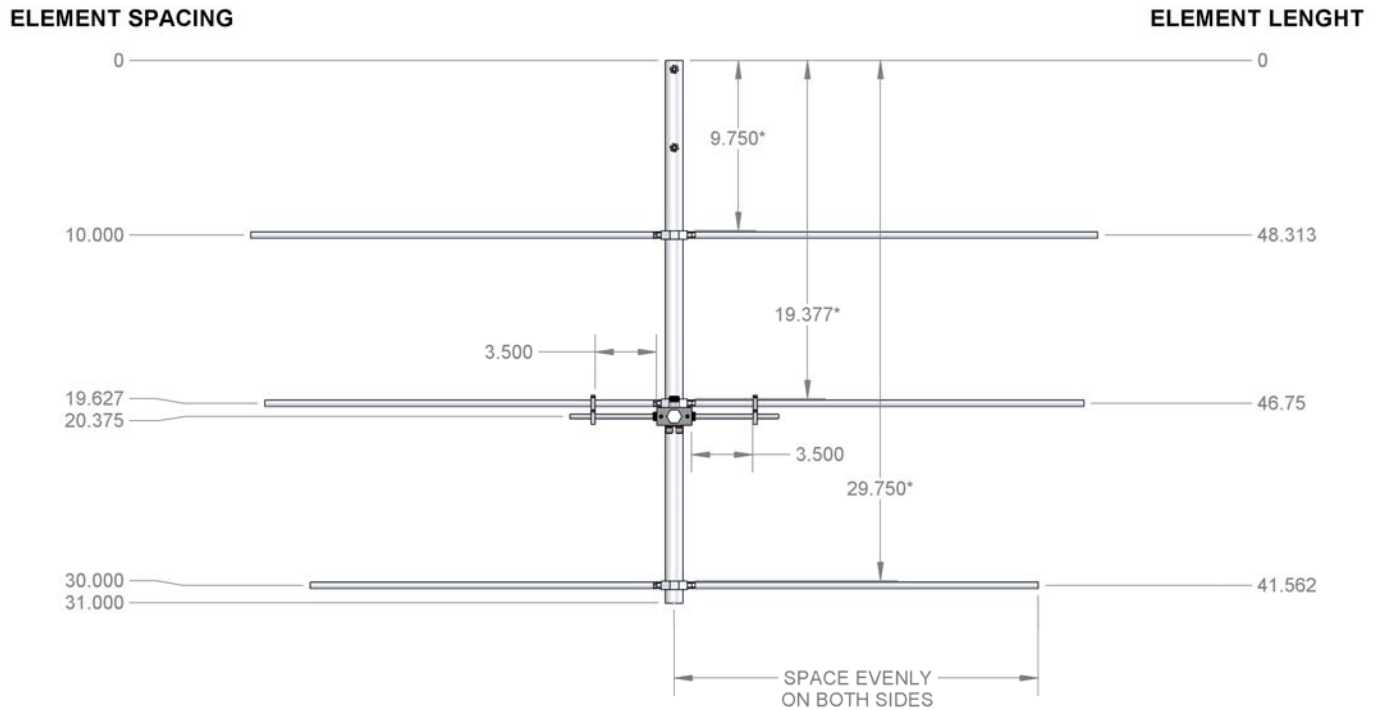
Model	127-3	Power Handling	3 kW, Higher avl.
Frequency Range.....	126 To 127.5 mHz	Boom Length / Dia.....	31" / 1"
*Gain, (FS) / Over gnd	7.1 dBi	Maximum Element Length.....	48-5/16"
Front to back	15 dB	Turning Radius:	29"
Beamwidth	E= 60° & H= 100°	Stacking Distance.....	70" High
Feed type	T Match	Mast Size.....	2" Nom.
Feed Impedance.	50 Ohms Unbalanced	Wind area / Survival	0.8 Sq. Ft. / 100 MPH
Maximum VSWR.....	1.5:1 Typical	Weight / Ship Wt.....	2 Lbs. / 6 Lbs.
Input Connector.....	"N" Female		

***Subtract 2.14 from dBi for dBd / FS = Free Space**

FEATURES:

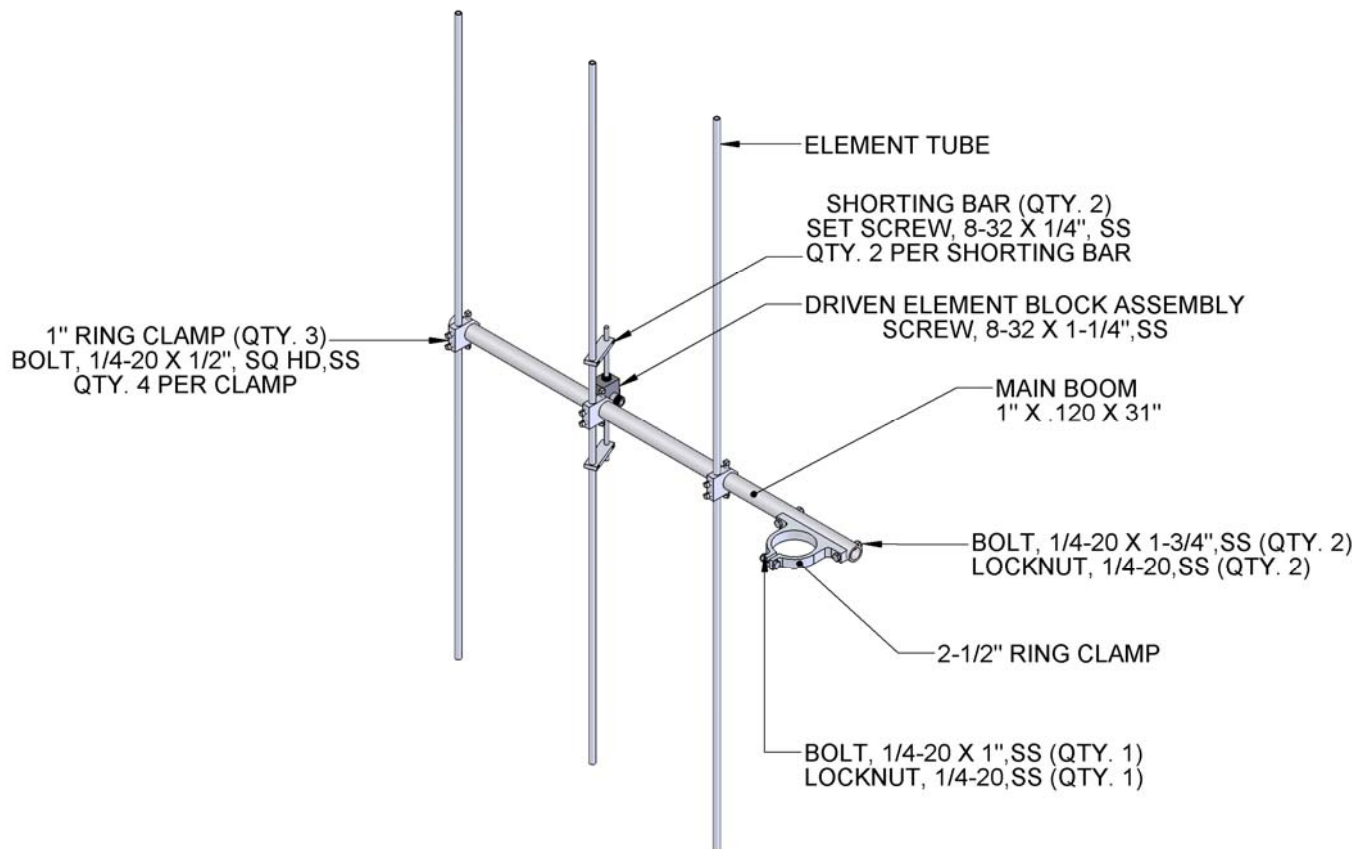
Sturdy mechanical design and computer optimized performance make the 127-3 an exceptional antenna. A totally sealed and grounded driven element design with black anodized coating and heavy duty boom will provide optimized performance for years to come. A perfect low profile antenna for high gain phased arrays.

127-3 DIMENSIONS & HARDWARE



NOTE:

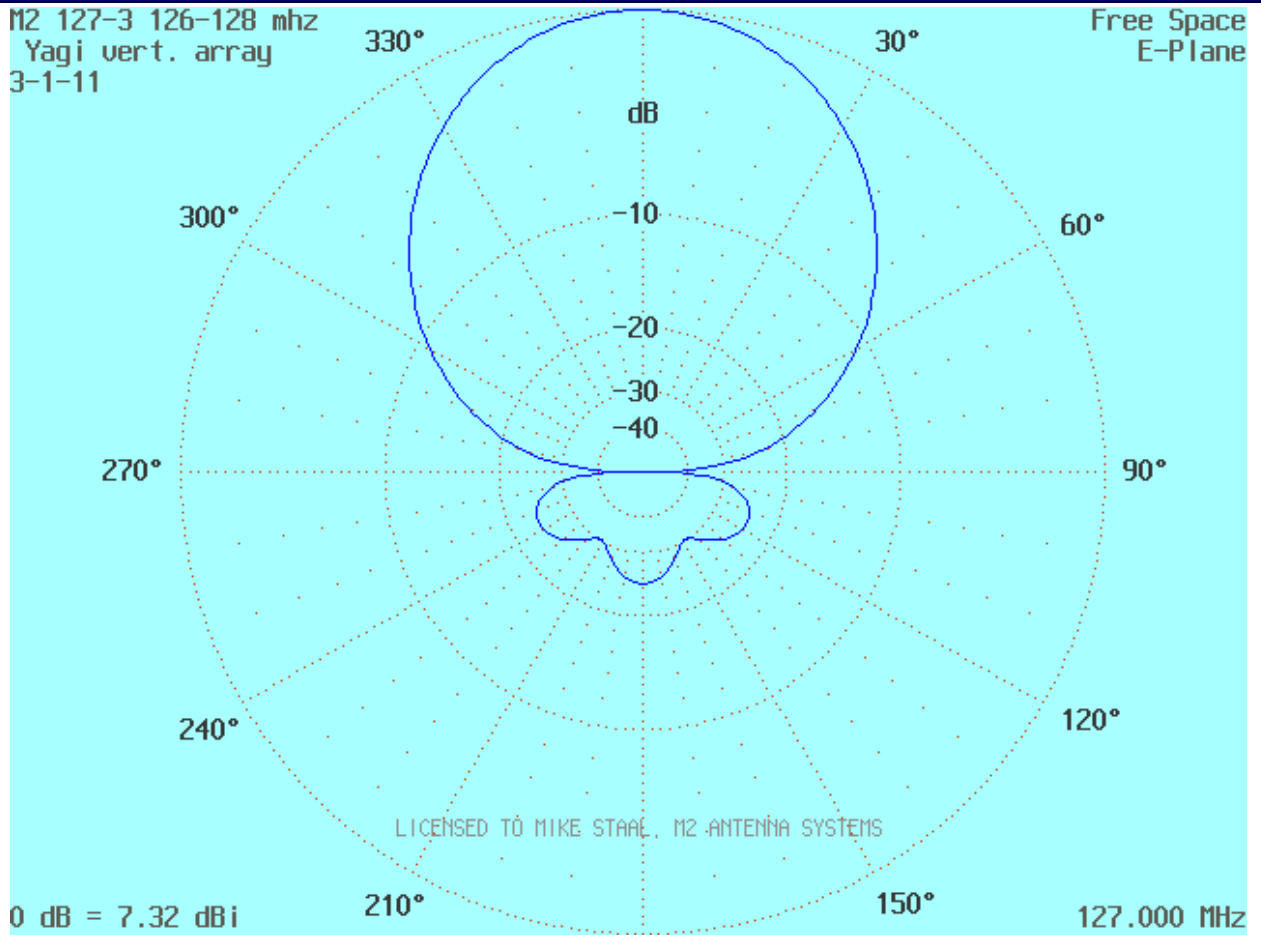
DIMS WITH AN * ARE FROM THE ANTENNA BOOM REAR TO THE FACE OF THE 1" RING CLAMP.



127-3 E-PLANE PLOT & H-PLANE PLOT

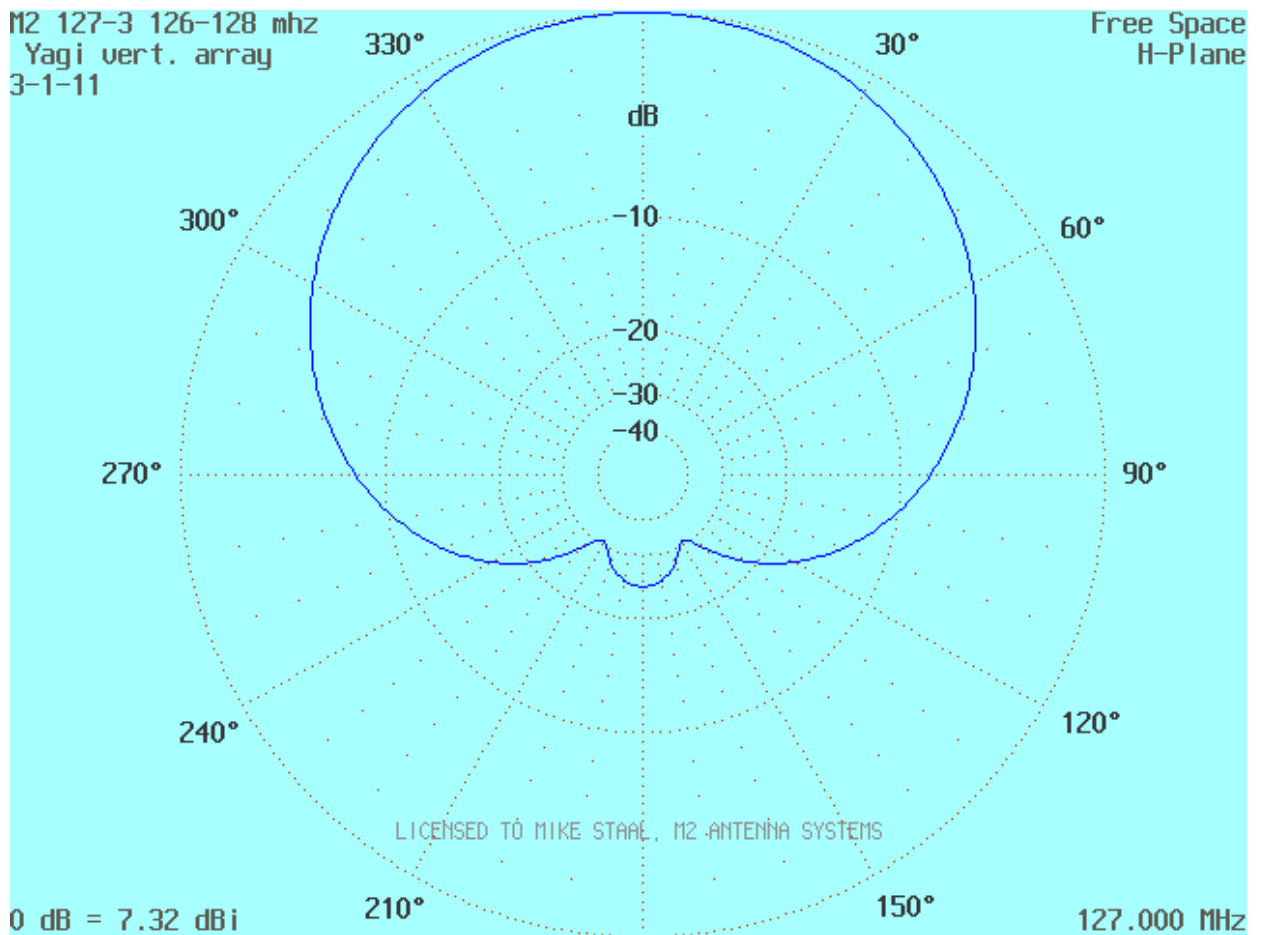
M2 127-3 126-128 mhz
Yagi vert. array
3-1-11

Free Space
E-Plane



M2 127-3 126-128 mhz
Yagi vert. array
3-1-11

Free Space
H-Plane



127-3 PARTS & HARDWARE

DESCRIPTION.....	QTY
BOOM, 1" X .120 X 31" ALUM TUBE	1
ELEMENT TUBE, 3/8" X .049 X SEE CHART	3
DRIVEN ELEMENT BLOCK ASSEMBLY	1
BALUN CABLE, 1/2 WAVE, RG-6U	1
SHORTING BAR, 1/4" X 3/4" X 2-1/2".....	2
RING CLAMP, 1" (M2AEC0250)	3
RING CLAMP, 2-1/2" (M2AEC0220)	1
USER MANUAL.....	1

IN HARDWARE BAGS:

BOLT, 1/4-20 X 1-3/4", SS	2
BOLT, 1/4-20 X 1", SS.....	1
BOLT, 1/4-20 X 1/2" SQ HEAD, SS	12
LOCKNUT, 1/4-20, SS.....	3
SCREW, 8-32 X 1-1/4", SS	1
SET SCREW, 8-32 X 1/4", SS.....	4
NUT SEALS, 3/8-32 (FOR BALUN CONN.).....	2
LOCKWASHER, 8-32, SS	1
PENETROX CUP	1
ALLEN WRENCH, 5/64"	1
CABLE TIES, MEDIUM	2

M² ANTENNA SYSTEMS, INC.

4402 N. SELLAND AVE.

FRESNO, CA 93722

(559) 432-8873 FAX: 432-3059

www.m2inc.com Email: sales@m2inc.com