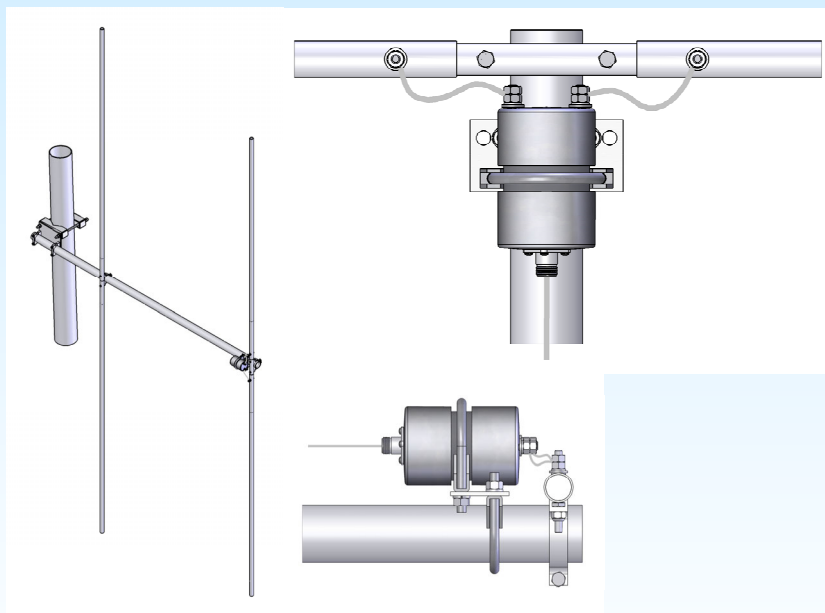




M2 Antenna Systems, Inc.

Model No: FD35.5



SPECIFICATIONS:

ModelFD35.5
Frequency Range.....35-36 MHz
Gain.....6.5 dBi / 4.36 dBd
Front to back10 dB Typical
BeamwidthE=130° (Azimuth)
Feed type“T” Match
Feed Impedance.....50 Ohms
Maximum VSWR.....< 1.5:1

Polarity.....Vertical
Input Connector“N” Female
Power Handling1 kW
Element Length131”
Mounting.....2” Mast
Wind Survival100 MPH
Weight / Ship Wt.....45 Lbs. / 55 Lbs.

***Subtract 2.14 from dBi for dBd**

FEATURES:

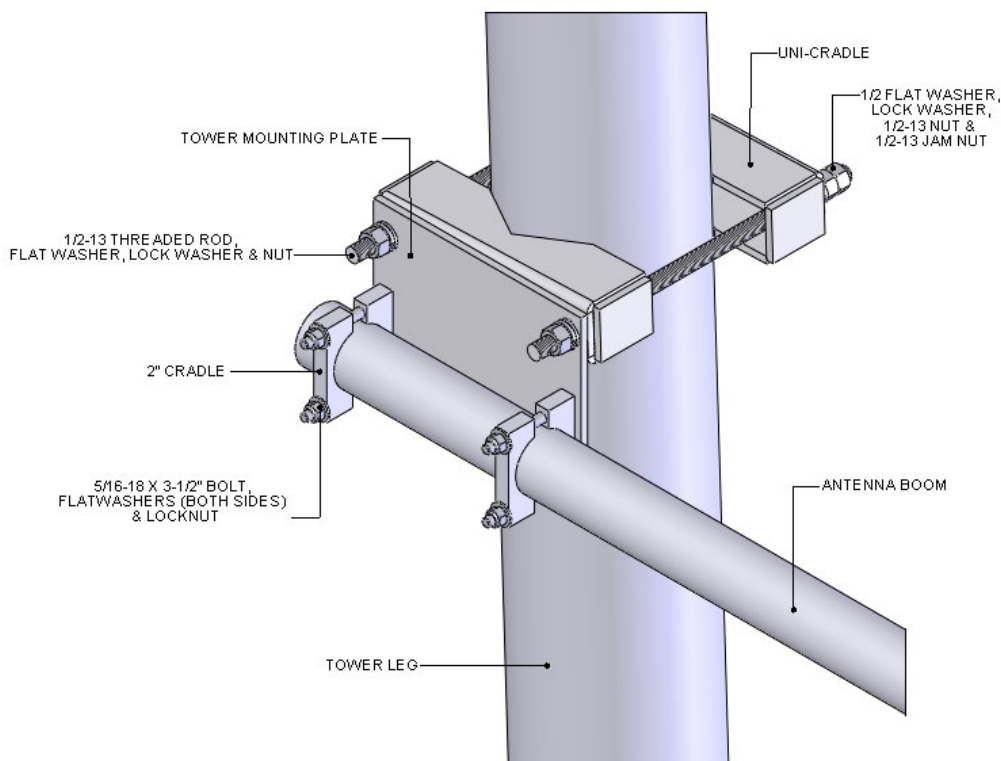
The FD35.5 Dipole antenna offers performance characteristics for specialized operations within the 46-36 MHz region. The FD35.5 Dipole produces a smooth, vertically polarized pattern. No rotation or steering is required. The FD35.5 Dipole's rugged, weatherproof construction suits mobile and marine applications as well as fixed, land based installations in hostile environments.

35.5 MHz Dipole Assembly Manual

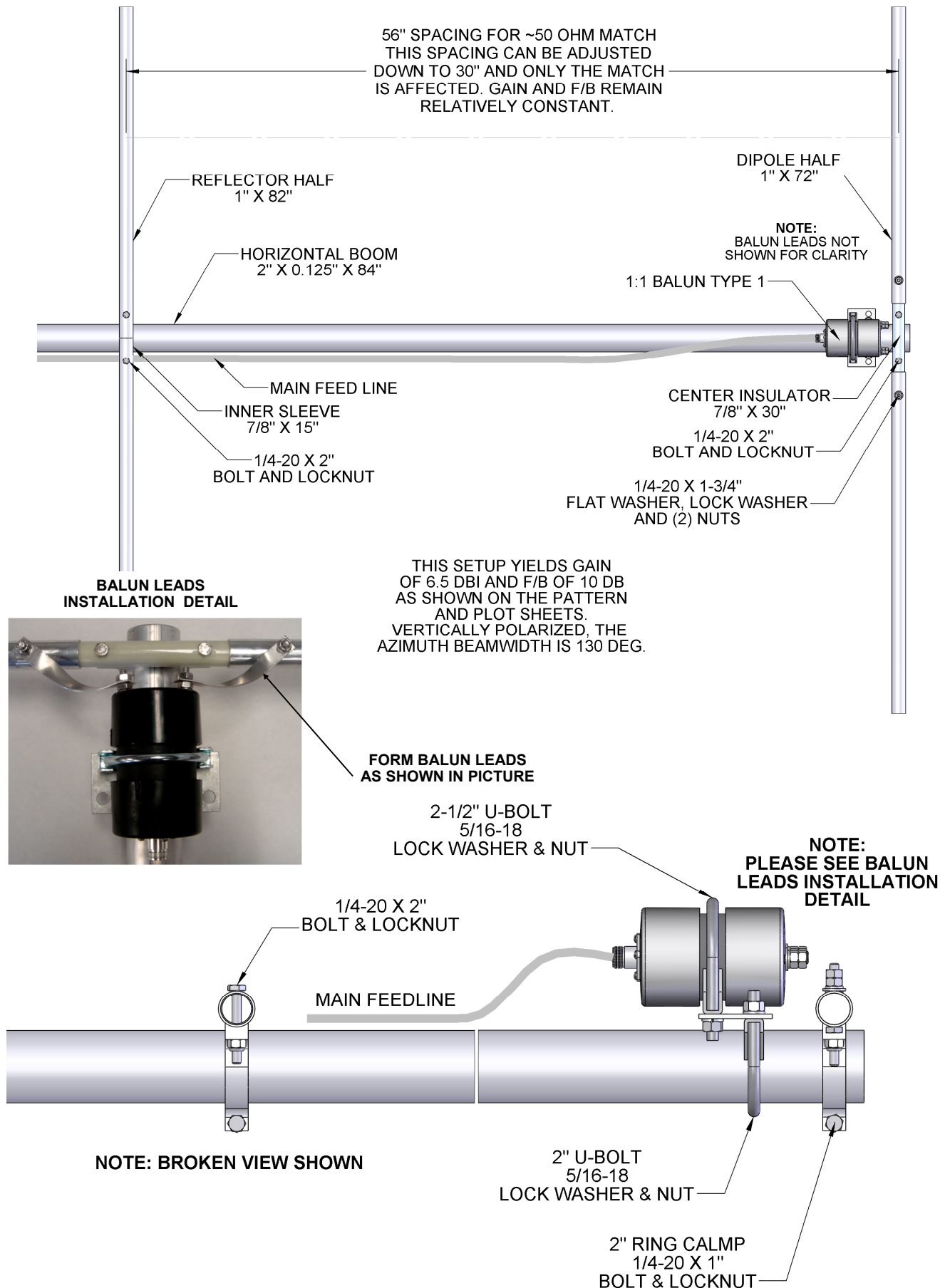
TYPICAL TOOLS REQUIRED: 7/16, 1/2 spin-tight, end wrenches and or sockets and large adjustable wrench.

NOTE, ZINC PASTE HAS BEEN SUPPLIED TO ADD LIFE TO THE CONNECTIONS IN THIS ANTENNA. IT CAN ALSO BE USED ON ALL THREADS AS ANTI-SEIZE COMPOUND.

1. Assemble the DIPOLE AND OPTIONAL REFLECTOR referring to the ASSEMBLY DETAIL drawing. Bolt sizes and other details should make assembly very straight forward. Tighten all 1/4-20 hardware to 10 inch pounds of torque except on the balun. Hold the bottom nut on each balun stud while tightening the top nut securely.
2. Use good quality 50 Ohm coax such as Times Wire and Cable LMR-400 or larger.
3. The Mast or Tower leg clamp assembly will accommodate up to 6" diameter tube. It can also be tilted DOWN as much as 15 degrees to accommodate a tapered tower leg configuration. Install the 2" machined saddles for the antenna boom. Use bolts, 5/16-18 x 3-1/2" with flat washers on each side and 5/16-18 lock nuts. Slide in the boom so it just protrudes past the second saddle set, align the dipole vertically (or horizontally) and tighten the 5/16" nuts. Now position the plate so the antenna boom is at the bottom of the plate. The large saddles for the mast / tower leg attach on the opposite side of the plate. Mount the assembly on the tower leg or mast and adjust the dipole perpendicular to the horizon. Then tighten the 1/2" bolt assemblies. Add the two extra nuts to "jam" the assembly for sever vibrations.



35.5 MHz DIPOLE WITH OPTIONAL REFLECTOR



PARTS LIST 35.5 MHz DIPOLE AND OPTIONAL REFLECTOR

DESCRIPTION	QTY
Boom, 2" x .125 x 84"	1
Dipole Element, 1" x .058 x 72"	2
Reflector Element, 1" x .058 x 82"	2
Center Insulator, 7/8 x 30" Fiberglass Rod	1
Ring Clamp, 2" Machined	2
Balun, 330 (38" wires) 30-100 MHz	2
Balun Leads, 1/2" x 4-3/8" x .062.....	1
Mounting Plate, Balun Aluminum.....	1
U-Bolt and Saddle, 2"	1
U-Bolt and Saddle, 2-1/2" (Balun).....	1
Mast Plate, Steel (Plated with Slot)	1
Saddle, 2" Machined	4
Large Saddle Clamp (for mast or tower leg mounting)	2
Assembly Instructions.....	1

HARDWARE

Threaded Rod, 1/2-13 x 12" Zinc.....	2
Nut, 1/2-13 SS	6
Lock Washer, 1/2" Split Ring	4
Flat Washer, 1/2" SS	4
Bolt, 5/16-18 x 3-1/2" SS	4
Lock Nut, 5/16-18 SS.....	4
Nut, 5/16-18 SS	4
Lock Washer, 5/16" SS.....	4
Flat Washer, 5/16" SS	8
Bolt, 1/4-20 x 2" SS.....	4
Bolt, 1/4-20 x 1-3/4" SS	2
Bolt, 1/4-20 x 1" SS.....	2
Lock Nut, 1/4-20 SS.....	4
Lock Washer, 1/4" Split Ring SS	2
Flat Washer, 1/4" SS	2
Penetrox Paste, Cup.....	1

M2 Antenna Systems, Inc.
4402 N. Selland Ave.
Fresno, CA 93722
(559) 432-8873 FAX: 559-432-3059
www.m2inc.com Email: sales@m2inc.com