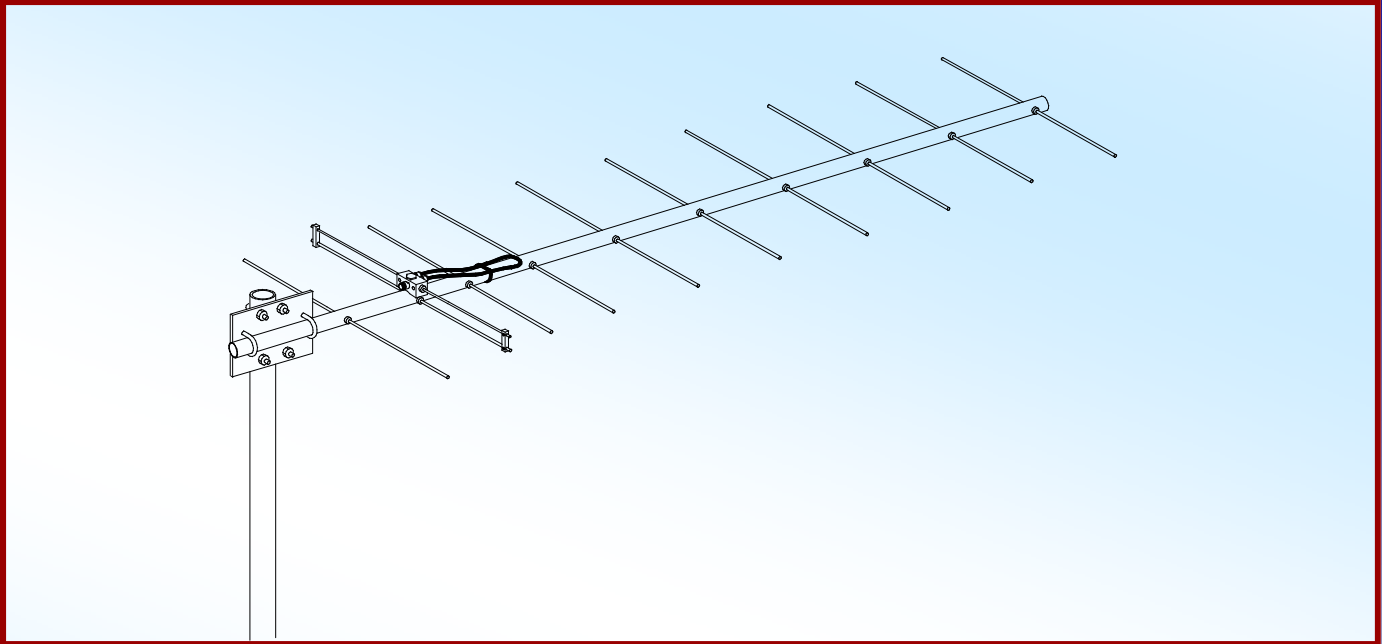




# M2 Antenna Systems, Inc. Model No: 410-10



## SPECIFICATIONS:

Model .....	410-10	Boom Length / Dia.....	74" / 1"
Frequency Range.....	400 To 420 MHz	Maximum Element Length.....	14"
*Gain .....	14 dBi	Stacking Distance.....	*Call
Front to back .....	22 dB Typical	Mounting.....	1-1/2" to 2" Nom.
Feed type .....	"T" Match	Wind area / Survival .....	0.6 Sq. Ft. / 100 MPH
Feed Impedance.....	50 Ohms Unbalanced	Weight / Ship Wt.....	6 Lbs. / 8 Lbs.
Maximum VSWR.....	1.5:1		
Input Connector.....	"N" Female		
Power Handling.....	1.5 kW		

**\*Subtract 2.14 from dBi for dBd**

## FEATURES:

The 410-10 has been computer designed to cover 400-420 MHz. It is ideal for repeater linking or any point to point application. The pattern is clean with little or no dropouts in performance. Clean patterns in most applications provide more reliable communications with less inter-mod. An optional stacking harness is available when more than one antenna is required for reduced beamwidth or additional gain.

Construction is classic M2 for long term electrical and mechanical integrity. Elements are 3/16" 6061-T6 rod, mounted through the boom on UV stabilized insulators and locked in place with stainless steel shaft retainers. The driven element module is CNC machined and all connectors are O-ring sealed. Internal connections are encapsulated in a space-age silicon gel with nearly 4 times the dielectric strength of air. Balun connectors are triple-sealed to the coaxial cable.