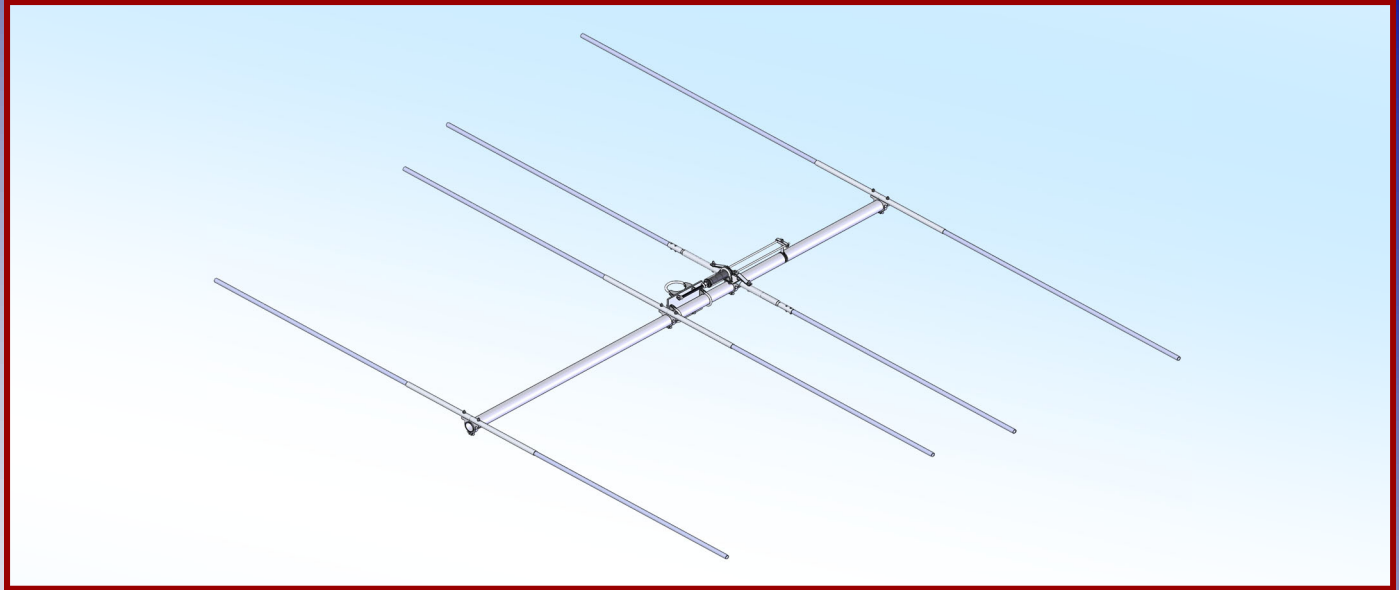




M2 Antenna Systems, Inc. Model No: 43.5-4



SPECIFICATIONS:

Model	43.5-4	Power Handling	1.5 kW
Frequency Range	42.5 to 45.2 MHz	Boom Length / Dia	98" / 2"
Gain	11.17 dBi	Element Length / Dia	164" / 7/8" - 1/2"
Front to back	12 dB Typical	Turning Radius:	Call
Feed type	Hair Pin Match	Stacking Distance	Call
Feed Impedance	50 Ohms Unbalanced	Mast Size	2" to 3" Nom.
Maximum VSWR	1.5:1 Typical	Wind area / Survival	1.6 Sq. Ft. / 100 MPH
Input Connector	"N" Connector	Weight / Ship Wt.	40 Lbs. / 45 Lbs.

***Subtract 2.14 from dBi for dBd / FS = Free Space**

FEATURES:

The 43.5-4 has been computer optimized from the ground up for gain and pattern covering 42.5-45.2 MHz. Originally designed for Meteor Scatter and monitoring systems. The custom 1:1 Fairite balun and low loss hairpin match help maintain high efficiency. Element ring clamps and other important components are CNC machined for maximum strength and electrical integrity. All antenna hardware is stainless steel and the U-bolts for mounting are Zinc plated.

M2 antenna Systems, Inc., has well over 35 designs for Meteor Scatter applications covering from 39 MHz to 50 MHz. If you have a specific requirement, please contact us for more details.

M2 Antenna Systems, Inc. 4402 N. Selland Ave. Fresno, CA 93722

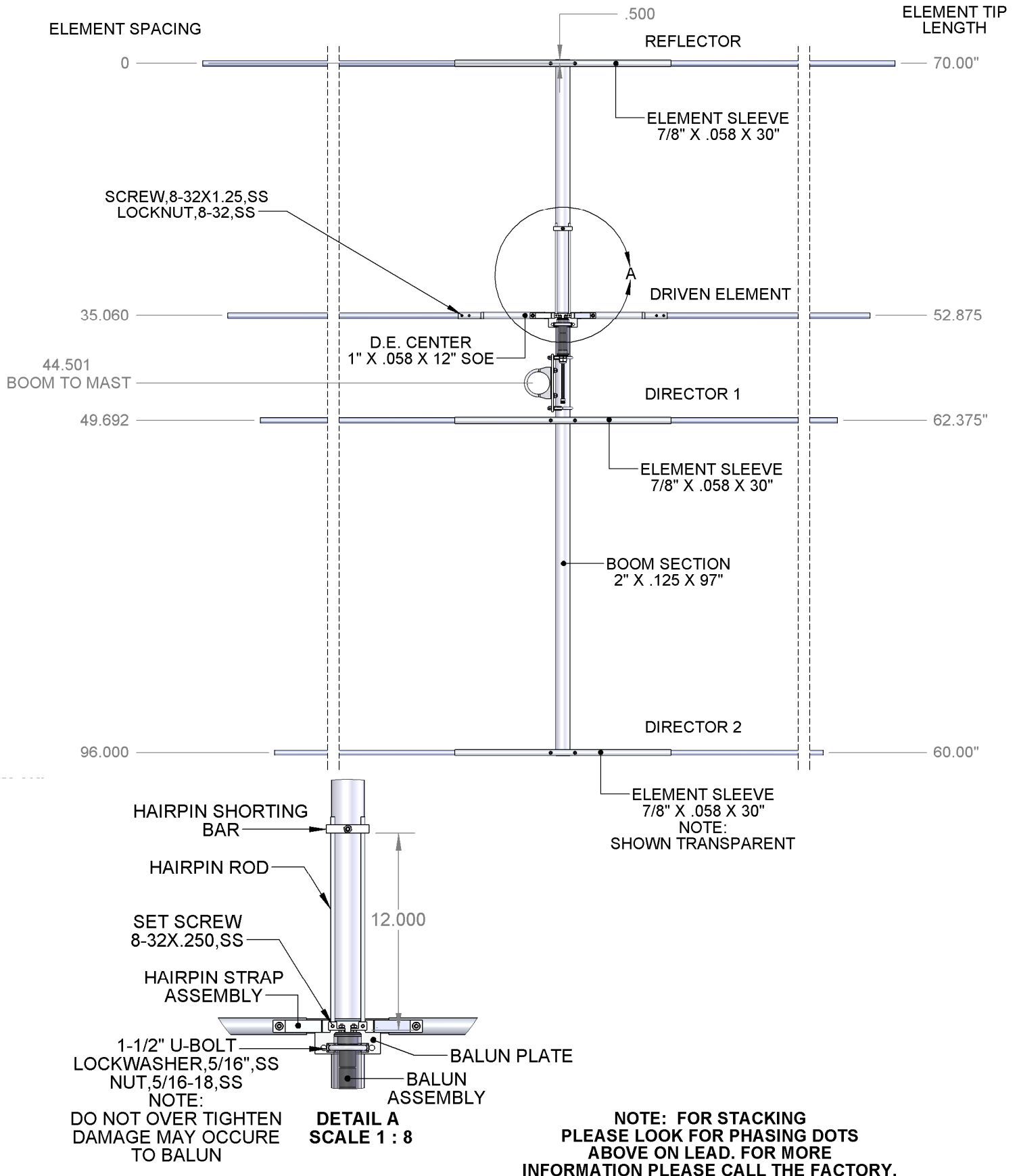
Tel: (559) 432-8873 Fax: (559) 432-3059 Web: www.m2inc.com

©2022 M2 Antenna Systems Incorporated

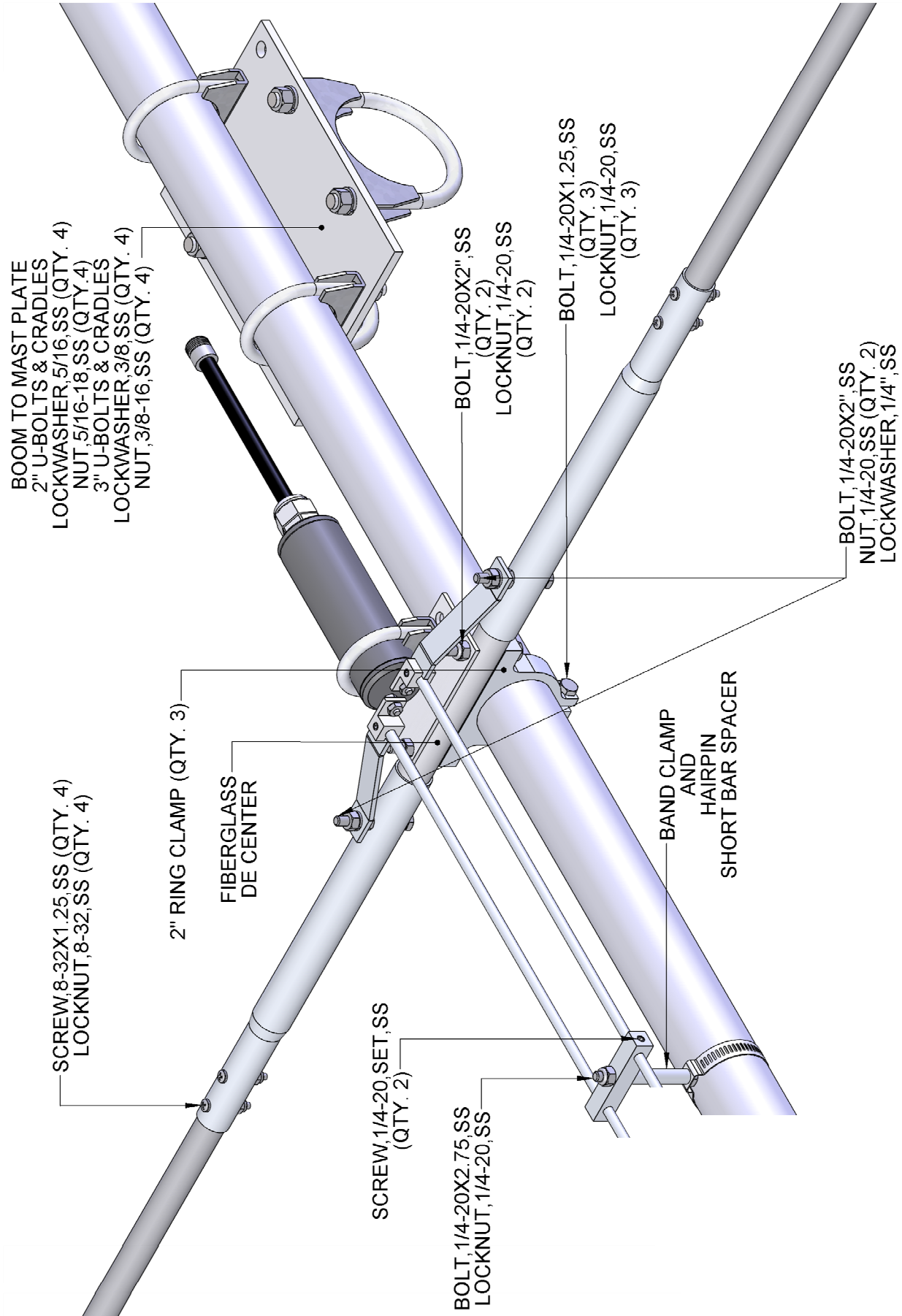
08/30/22
Rev.01

43.5-4 DIMENSION SHEET

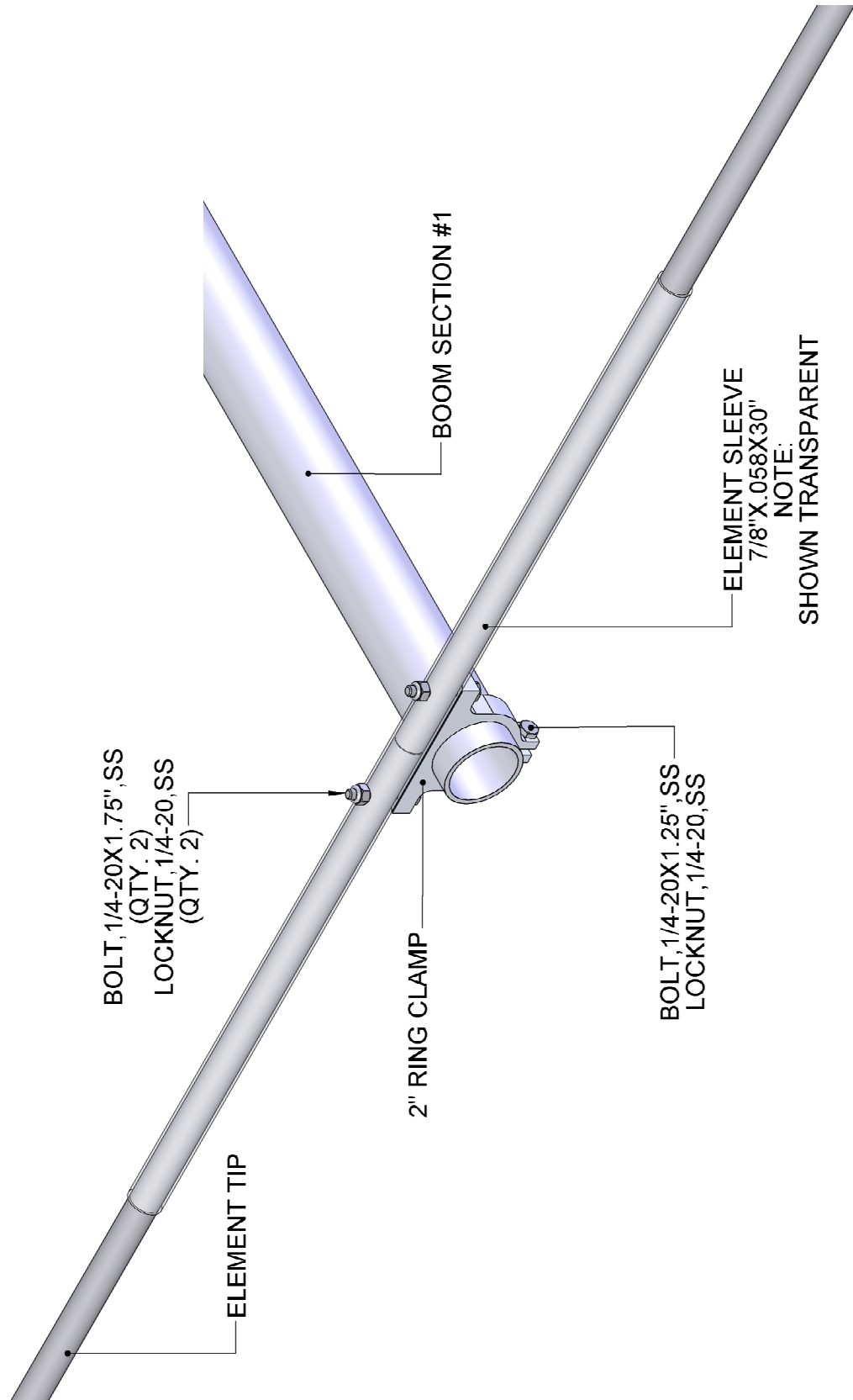
TOOLS REQUIRED: Screwdriver, 11/32 wrench, socket or spintite, a 7/16" and 1/2" wrench or socket, tape measure.



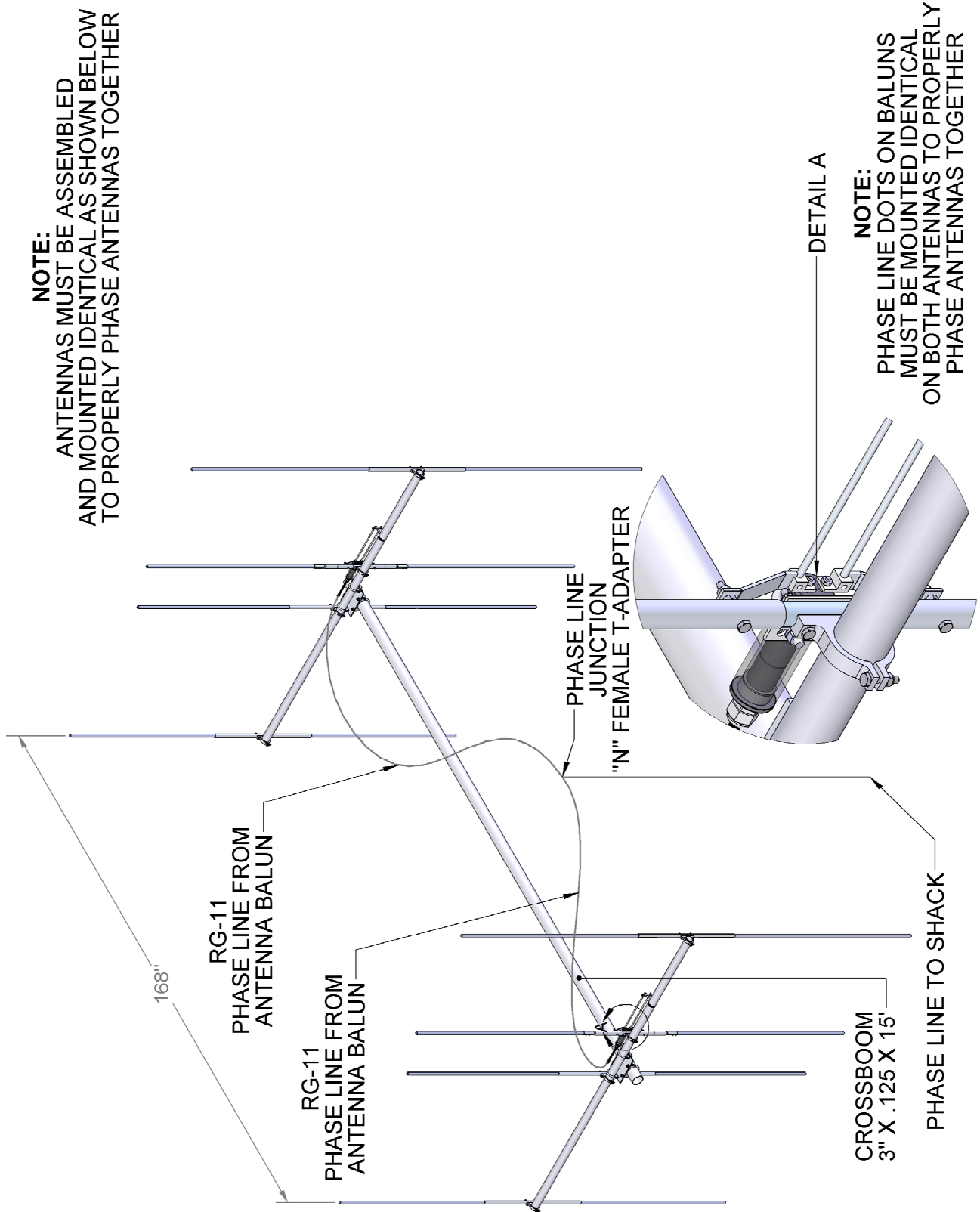
43.5-4 HAIRPIN & DE DETAIL



REFLECTOR & DIRECTOR DETAIL



SYSTEM LAYOUT DETAIL



M² ANTENNA SYSTEMS, INC.

4402 N. SELLAND AVE.

FRESNO, CA 93722

(559) 432-8873 FAX: 432-3059

www.m2inc.com Email: sales@m2inc.com

43.5-4 PARTS & HARDWARE

DESCRIPTION.....	QTY
BOOM SECTION #1: 2.0" X .125 X 97"	1
DE ELEMENT CENTER, 1.0" X .058 X 12 SOE"	2
ELEMENT TIPS, 3/4" X .049 X SEE SHEET	8
FIBERGLASS DE CENTER, 7/8" X 14.75"	1
ELEMENT SLEEVE, 7/8" X .058 X 30.00"	3
RING CLAMP 2"	4
HAIRPIN SHORT BAR	1
HAIRPIN BLOCK & STRAP ASSEMBLY (LEFT)	1
HAIRPIN BLOCK & STRAP ASSEMBLY (RIGHT)	1
HAIRPIN SHORT BAR SAPCER, 3/8" X 1.75	1
HAIRPIN ROD 1/4" X 13"	2
BALUN PLATE, 1/8" X 2.0 X 4.0"	1
BOOM TO MAST PLATE, 6" X .125 X 8"	1
(3) FAIRITE 1:1 VHF BALUN ASSEMBLY WITH STUDS	1
BAND CLAMP, 2 TO 2-1/2" with 1/4" Hole	1
PENETROX / ZINC PASTE CUP	1
ASSEMBLY MANUAL	1
 HARDWARE:	
U-BOLT AND CRADLE, 3"	2
U-BOLT AND CRADLE, 2"	2
U-BOLT AND CRADLE, 1-1/2"	1
LOCKWASHER, 3/8, SS	4
NUT, 3/8-16, SS	4
LOCKWASHER, 5/16, SS	6
NUT, 5/16-18, SS	6
BOLT, 1/4-20X2.75, HEX HD, SS	1
BOLT, 1/4-20X2.0, HEX HD, SS	4
BOLT, 1/4-20X1.75, HEX HD, SS	6
BOLT, 1/4-20X1.25, HEX HD, SS	4
SET SCREW, 1/4-20, SS	4
LOCKWASHER, 1/4, SS	2
NUT, 1/4-20, SS	4
LOCKNUT, 1/4-20, SS	13
SCREW, 8-32X1.25, PH PHL, SS	4
LOCKWASHER, 8-32, SS	2
NUT, 8-32, SS	2
LOCKNUT, 8-32, SS	4
ALLEN KEY, 1/8"	1
 SYSTEM / ARRAY PARTS.....	
CROSSBOOM, 3"X.125X15'	1
RG-11 PHASE LINE	2
"N" FEMALE "T" ADAPTER	1

M² ANTENNA SYSTEMS, INC.
 4402 N. SELLAND AVE.
 FRESNO, CA 93722
 (559) 432-8873 FAX: 432-3059
 www.m2inc.com Email: sales@m2inc.com