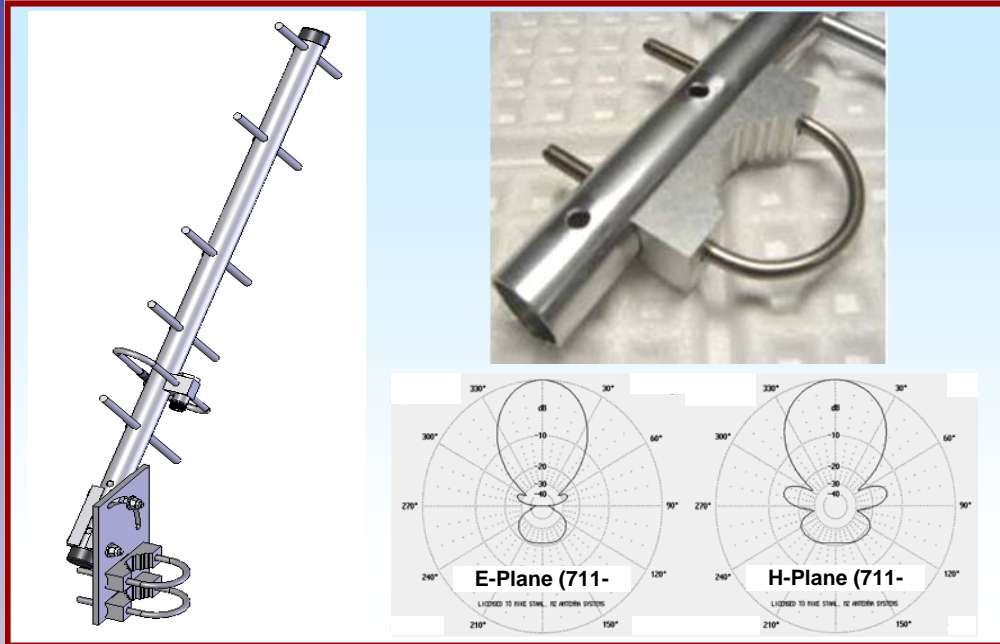




M2 Antenna Systems, Inc. Model No: 711-ISP



SPECIFICATIONS:

Model	711-ISP	Polarity	VERT / HORZ
Frequency Range	699-740 MHz	Power Handling	500 Watts
*Gain	11dBi	Boom Length / Dia	25"/ 1"
Front to back	17 dB	Stacking Distance	22"
Feed Impedance	50 Ohms	Mast Size.....	1 1/2" TO 2"
VSWR	1.3:1 TYPICAL	Wind area / Survival	(.1) SQ FT./ 100MPH
Input Connector	"N" Female	Weight / Ship Wt.	1 Lbs.

***Subtract 2.14 from dBi for dBd**

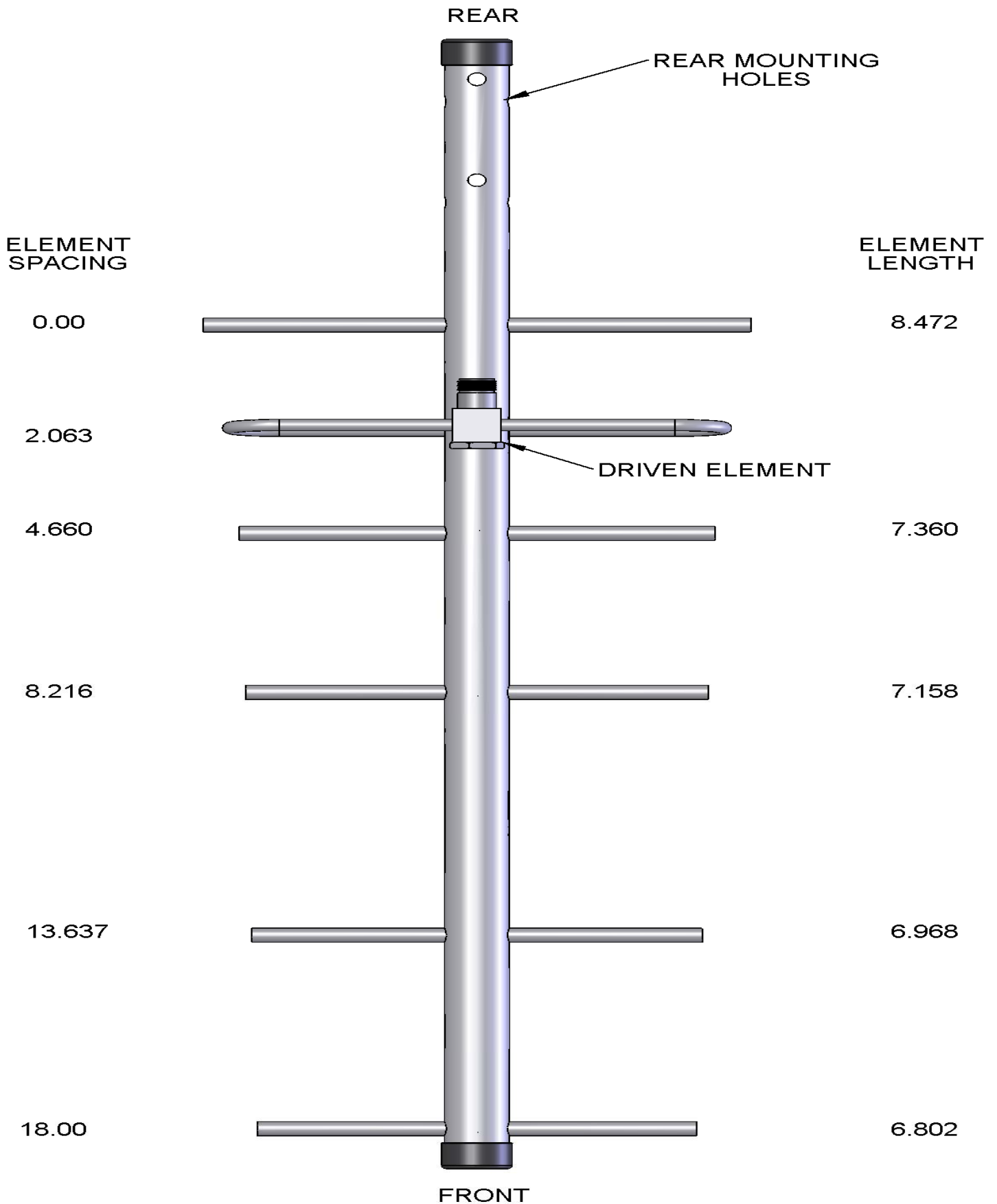
FEATURES:

The **711-ISPA** Commercial Wireless internet antenna, has been designed to give you optimum performance for the smallest package size. **The new 5/16" element design decreases the effects of rain and light snow deterioration often seen in similar antennas.**

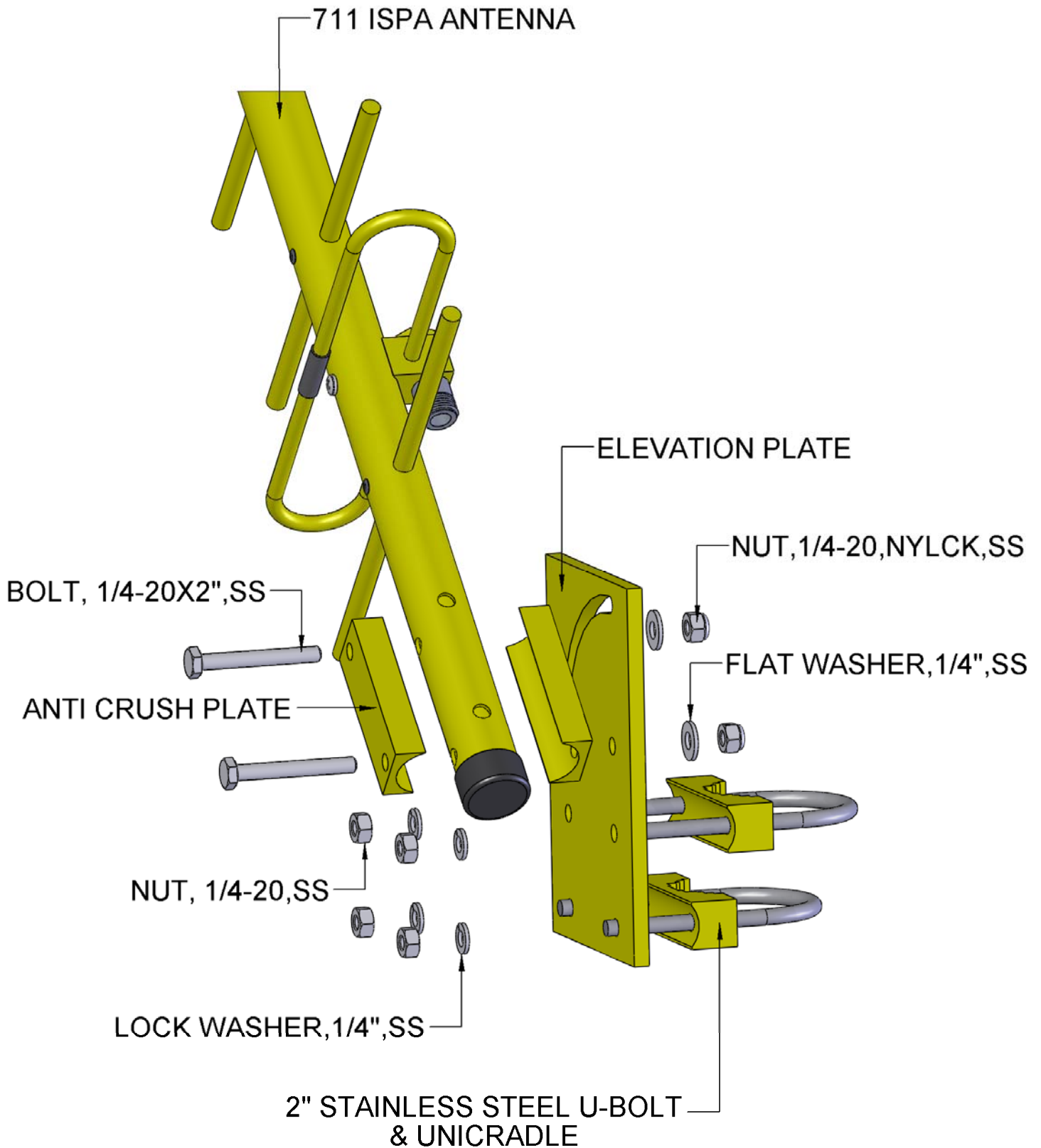
The heart of the **711-ISPA**, the folded dipole, provides a virtual flat match for over 30 MHz. The gain has been designed to roll-off quickly above range limits to prevent receiver overload from high power services above 740 MHz. The heavy duty boom and 5/16" elements, give the ISP service confidence for superior performance and longevity.

The **711-ISPA** is a DC grounded antenna designed to work with many radios.

711-ISP DIMENSION SHEET



711-ISP ASSEMBLY MANUAL



711-ISP PARTS & HARDWARE

DESCRIPTION.....	QTY
711ISPA ANTENNA	1
ELEVATION PLATE	1
ANTI CRUSH PLATE	2
WIRE, #10 COPPER WITH INSULATED 1/4"	
CRIMP LUGS (BOTH ENDS) 10'	1
ASSEMBLY MANUAL	1

HARDWARE BAG # 1:

NUT, NYLOCK, 1/4-20 SS	2
BOLT, 1/4-20 X 2.0 SS.....	2
NUT, 1/4-20, SS	4
LOCKWASHER, 1/4" SPLIT RING SS	4
FLATWASHER, 1/4 SS	2

HARDWARE BAG # 2:

U-BOLT, 2" SS	2
UNICRADLE.....	2

HAREDWARE BAG # 3:

LIGHTING ARESTER W/BRACKET & LUG	1
SCREW, 8-32 X .750 SHEET METAL SS.....	2

HARDWARE BAG # 4:

BOLT, 1/4-20 X 1", SS	1
LOCKWASHER, 1/4", SPLT RNG, SS.....	1
NUT, 1/4-20, SS	1

M² ANTENNA SYSTEMS, INC.

4402 N. SELLAND AVE.

FRESNO, CA 93722

(559) 432-8873 FAX: 432-3059

www.m2inc.com Email: sales@m2inc.com