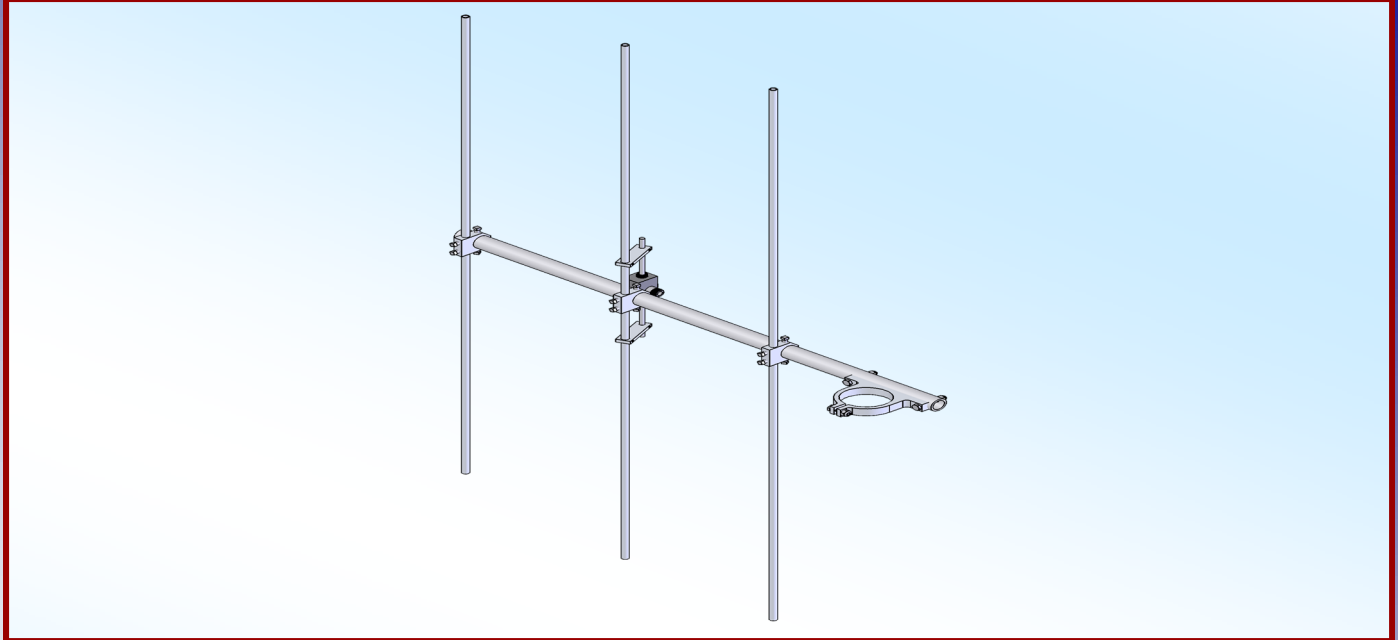




M2 Antenna Systems, Inc. Model No: 90-3FMBA



Model90-3FMBA
 Frequency Range.....88 to 92 MHz
 *Gain, (FS) / Over gnd7.58 dBi
 Front to back22 dB Typical
 Feed typeT Match
 Feed Impedance.....50 Ohms Unbalanced
 Maximum VSWR.....1.5:1 Typical
 Input Connector.....“N” Female

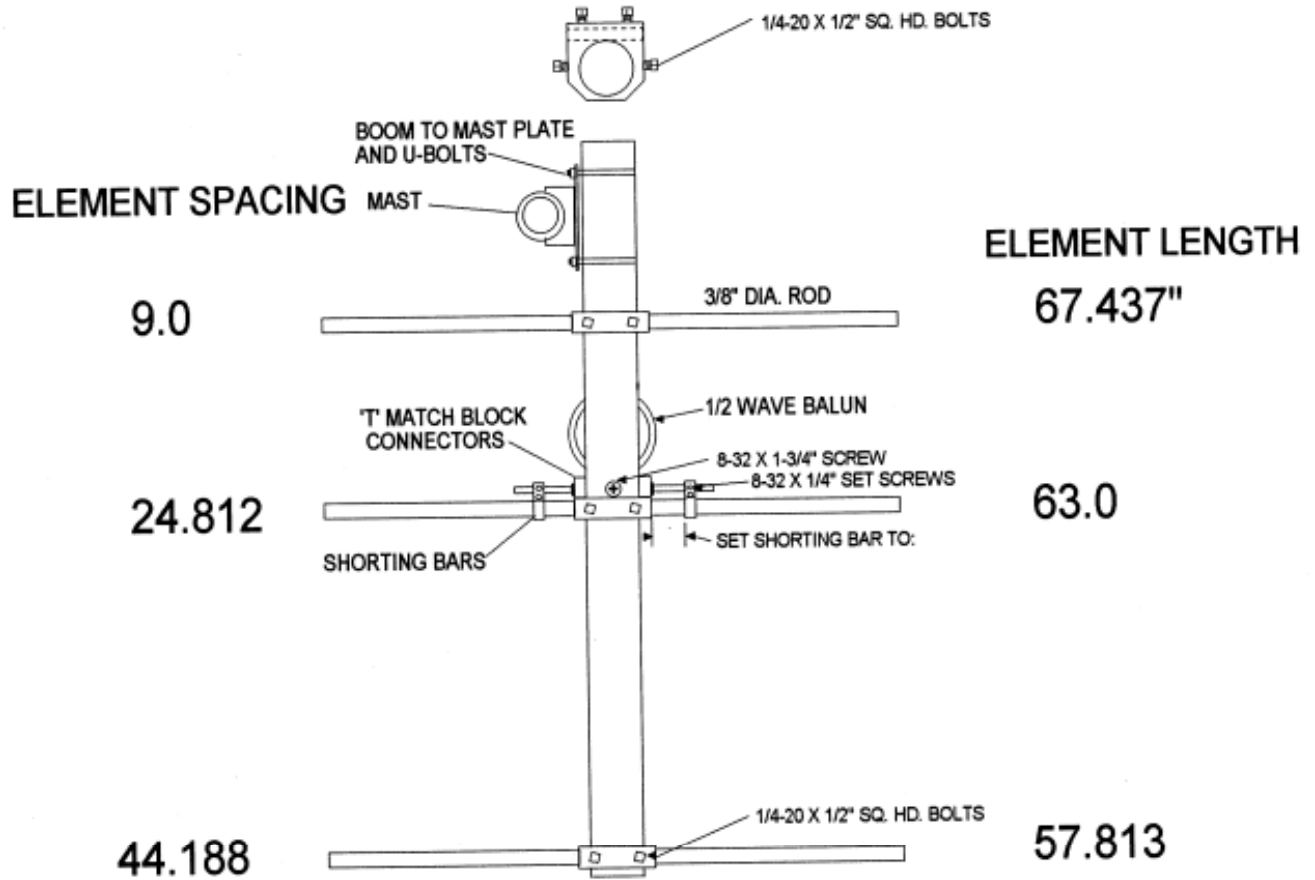
Power Handling1.5 kW
 Boom Length / Dia.....46” / 1-1/2”
 Maximum Element Length.....68”
 Turning Radius:Call
 Stacking Distance.....Call
 Mounting.....1-1/2 to 2” Nom.
 Wind area / Survival0.8 Sq. Ft. / 100 MPH
 Weight / Ship Wt.....3 Lbs. / 4 Lbs.

***Subtract 2.14 from dBi for dBd / FS = Free Space**

FEATURES:

Sturdy mechanical design and computer optimized performance make the 90-3FMBA an exceptional antenna for FM communication. A totally sealed and grounded driven element design with black anodized coating and heavy duty boom will provide optimized performance for years to come. A perfect low profile antenna for high gain phased arrays.

90-3FMBA DIMENSIONS SHEET



90-3FMBA PARTS & HARDWARE

DESCRIPTION	QTY
BOOM SECTION, 1-1/2" X .058 X 45" PLAIN.....	1
ELEMENT SET.....	1
DRIVEN ELEMENT ASSEMBLY.....	1
BALUN, 4:1.....	1
BOOM TO MAST PLATE, 4" X 6".....	1
RING CLAMP, 1-1/2".....	3
U-BOLT, 1-1/2".....	2
U-BOLT, 2".....	2
ASSEMBLY MANUAL.....	1
HARDWARE BAG	
SCREW, 8-32 X 1 3/4" SS.....	1
SET SCREW, 8-32 X 1/4" SS.....	4
SQUARE HEAD SEET SCREW, 1/4-20 X 1/2" SS.....	12
NUT, 5/16-18 SS.....	8
LOCKWASHER, 5/16 SS.....	8
NUT SEAL.....	2
ALLEN WRENCH, 5/64.....	1
NYLON TIE, 7".....	4

M² ANTENNA SYSTEMS, INC.
4402 N. SELLAND AVE.
FRESNO, CA 93722
(559) 432-8873 FAX: (559) 432-3059
www.m2inc.com Email: sales@m2inc.com