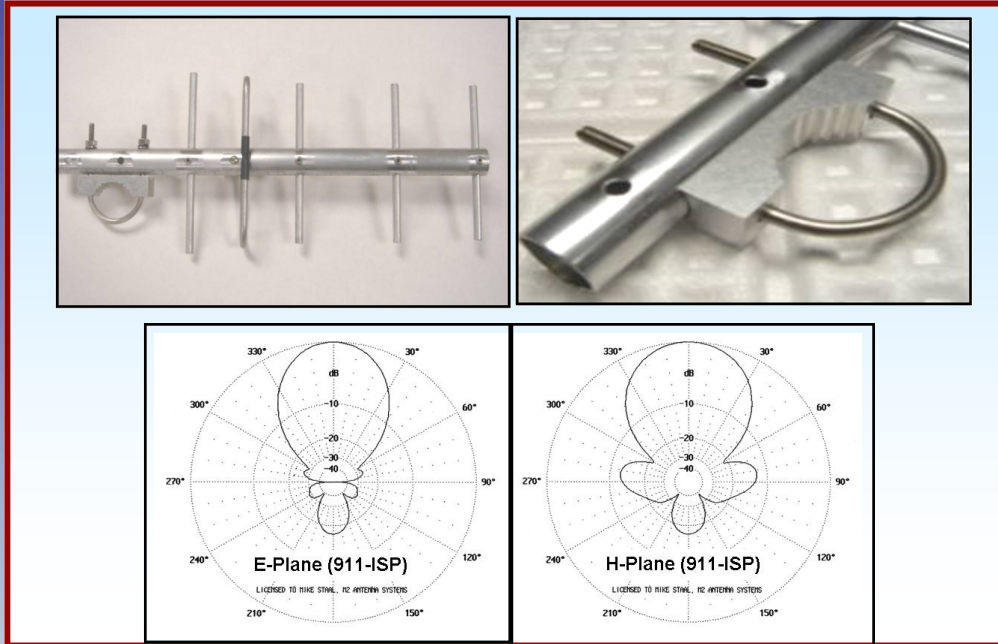




M2 Antenna Systems, Inc.

Model No: 902-5 YAGI



SPECIFICATIONS:

Model	902-5	Input Connector	"N" Female
Frequency Range	900 To 930 MHz	Polarity	VERT / HORZ
Usable Range	880-940 MHz	Power Handling	500 Watts
*Gain	11dBi	Boom Length / Dia	1"
Front to back	17 dB	Stacking Distance	28"
Beamwidth	H= 52° / E=44°	Mast Size.....	1 1/4" TO 2"
Feed Impedance.....	50 Ohms	Wind area / Survival	(.1) SQ FT./ 100 MPH
VSWR	1.3:1 TYPICAL	Weight / Ship Wt.	1 LB

***Subtract 2.14 from dBi for dBd**

FEATURES:

The **902-5** Wireless internet antenna, has been designed to give you optimum performance for the smallest package size. **The new 5/16" element design decreases the effects of rain and light snow deterioration often seen in similar antennas.**

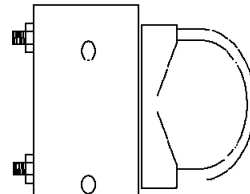
The heart of the **902-5**, the folded dipole, provides a virtual flat match for over 30 MHz. The gain has been designed to roll-off quickly above range limits to prevent receiver overload from high power services above 930 MHz. The heavy duty boom and 5/16" elements, give the ISP service confidence for superior performance and longevity.

The **902-5** is a DC grounded antenna designed to work with many radios including the Wave Rider. The 3003 and 3004 Wave Rider radios have internal DC circuit protection built in.

902-5 DIMENSION SHEET

REAR

ELEMENT
SPACING



DECIMAL TO
FRACTION
CONVERSION

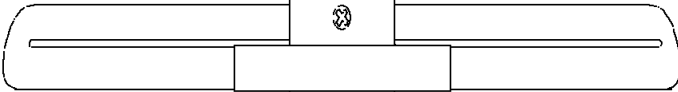
.062 = 1/16
 .125 = 1/8
 .188 = 3/16
 .250 = 1/4
 .313 = 5/16
 .375 = 3/8
 .437 = 7/16
 .500 = 1/2
 .562 = 9/16
 .625 = 5/8
 .688 = 11/16
 .750 = 3/4
 .813 = 13/16
 .875 = 7/8
 .937 = 15/16

0.000



6.625

1.813



4.304



5.750

8.068



5.688

11.200



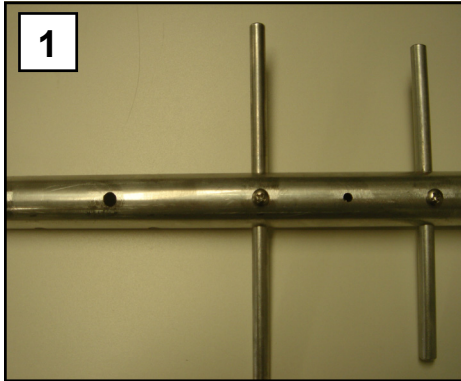
5.562

FRONT

902-5 ASSEMBLY MANUAL

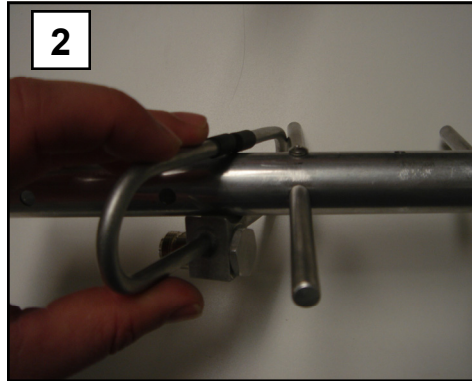
GETTING STARTED

Tools handy for assembly process: Phillips head screwdriver, 11/32" spin-tite or socket, 7/16" end wrench or socket. The elements of the antenna are pre-assembled from the factory.



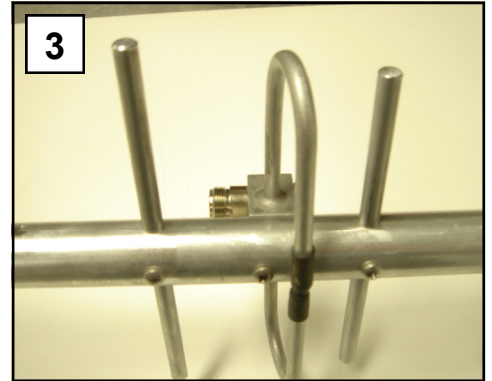
Step 1:

The assembly will be started at the rear of the boom section.



Step 2:

Attach the folded dipole to the rear boom section by sliding the unit back and forth until it is in place.



Step 3:

It may be necessary to remove the first element to slide the dipole in place. Attach the dipole with an 8-32 x 1 1/4" screw.



Step 5:

Attach the mounting U-bolt and Cradle in the correct polarity holes. Use the two 1/4-20 hex nuts and lock washers. **It is highly recommended to use a lubricant like WD-40 on the threads of the U-bolt. Stainless material will seize if not lubricated.**

902-5 PARTS & HARDWARE

DESCRIPTION.....	QTY
BOOM, 1.0" X .063 X 17.9375" ALUM	1
ELEMENTS, 5/16" (INSTALLED).....	4
FOLDED DIPOLE ASSEMBLY	1
U-BOLT, 2", SS & UNI-SADDLE	1
ASSEMBLY MANUAL	1

IN HARDWARE BAGS:

NUT, 1/4-20, SS	2
LOCKWASHER, 1/4" SPLIT RING SS	2
SCREW, 8-32 X 1-1/4", SS	1

M² ANTENNA SYSTEMS, INC.

4402 N. SELLAND AVE.

FRESNO, CA 93722

(559) 432-8873 FAX: 432-3059

www.m2inc.com Email: sales@m2inc.com