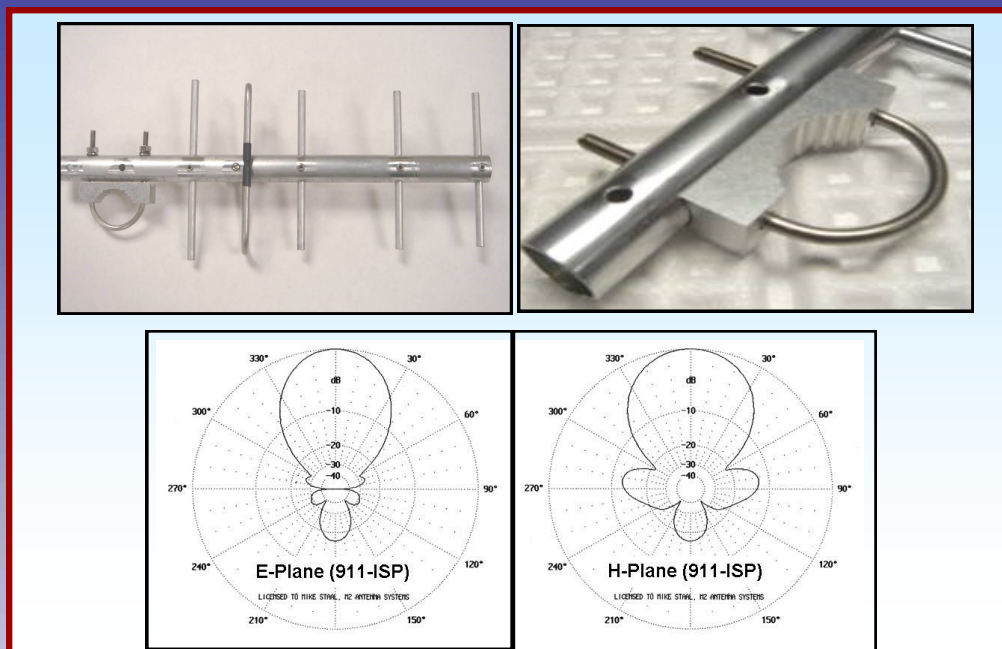




# M2 Antenna Systems, Inc.

## Model No: 911-ISP YAGI



### SPECIFICATIONS:

Model ..... 911-ISP  
 Frequency Range ..... 900 To 930 MHz  
 Usable Range ..... 880-940 MHz  
 \*Gain ..... 11dBi  
 Front to back ..... 17 dB  
 Beamwidth ..... H= 52° / E=44°  
 Feed Impedance ..... 50 Ohms  
 VSWR ..... 1.3:1 TYPICAL

Input Connector ..... "N" Female  
 Polarity ..... VERT / HORZ  
 Power Handling ..... 500 Watts  
 Boom Length / Dia ..... 1"  
 Stacking Distance ..... 28"  
 Mast Size ..... 1 1/4" TO 2"  
 Wind area / Survival ..... (.1) SQ FT./ 100 MPH  
 Weight / Ship Wt. .... 1 LB

**\*Subtract 2.14 from dBi for dBd**

### FEATURES:

The **911-ISP** Wireless internet antenna, has been designed to give you optimum performance for the smallest package size. **The new 5/16" element design decreases the effects of rain and light snow deterioration often seen in similar antennas.**

The heart of the **911-ISP**, the folded dipole, provides a virtual flat match for over 30 MHz. The gain has been designed to roll-off quickly above range limits to prevent receiver overload from high power services above 930 MHz. The heavy duty boom and 5/16" elements, give the ISP service confidence for superior performance and longevity.

The **911-ISP** is a DC grounded antenna designed to work with many radios including the Wave Rider. The 3003 and 3004 Wave Rider radios have internal DC circuit protection built in.

**Call about special bulk pricing !**

**M2 Antenna Systems, Inc. 4402 N. Selland Ave. Fresno, CA 93722**  
**Tel: (559) 432-8873 Fax: (559) 432-3059 Web: [www.m2inc.com](http://www.m2inc.com)**

©2015 M2 Antenna Systems Incorporated

06/09/15  
Rev.00

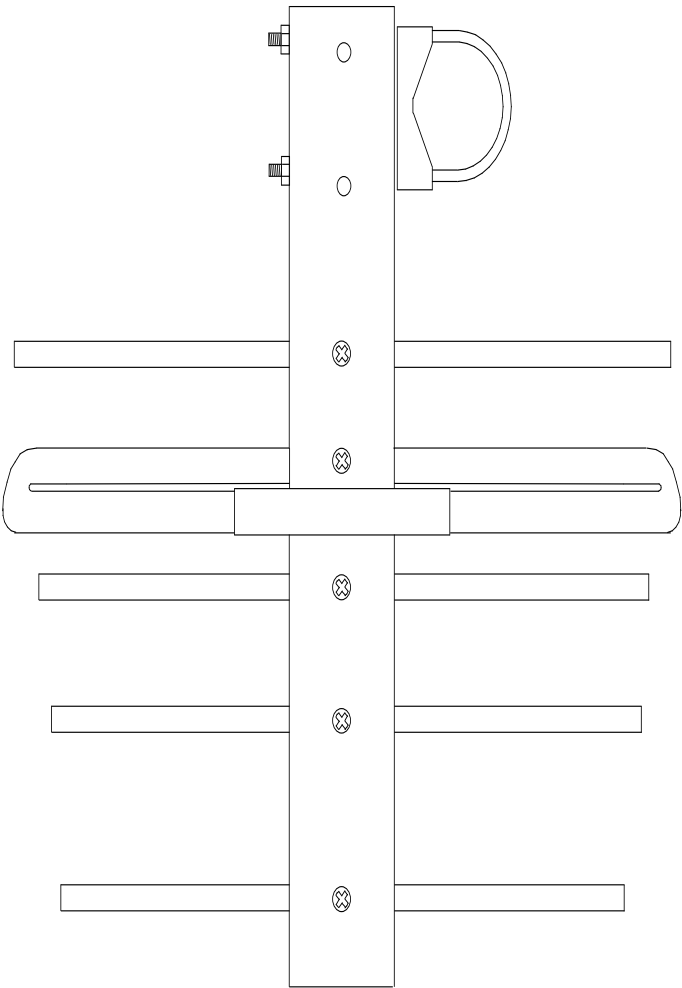
911-ISP DIMENSION SHEET

REAR

THE MELE  
GN CAPS

| OT LAMCED<br>NOT CARF<br>NO SREVNOO |
|-------------------------------------|
| 002 = 1 10                          |
| 122 = 1 8                           |
| 013 = 881                           |
| 220 = 1 4                           |
| 313 = 3 13                          |
| 833 = 3 8                           |
| 017 = 734                           |
| 200 = 1 2                           |
| 010 = 0 10                          |
| 822 = 2 8                           |
| 088 = 11 10                         |
| 220 = 3 4                           |
| 0131 = 3 18                         |
| 822 = 7 8                           |
| 0121 = 730                          |

0 000  
3 18 1  
4 03 4  
8 008  
11 200



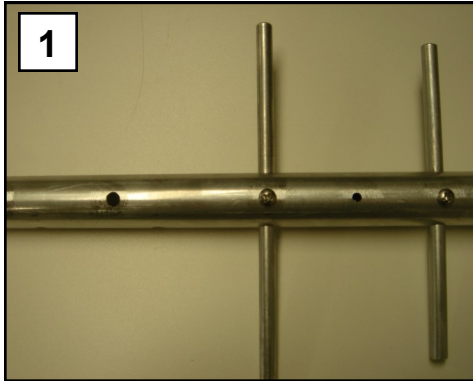
0 022  
2 270  
2 088  
2 202

FRONT

# 911-ISP ASSEMBLY MANUAL

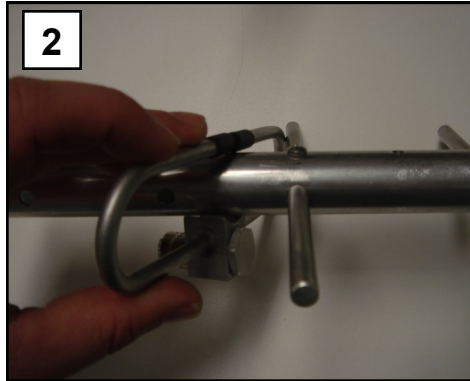
## GETTING STARTED

Tools handy for assembly process: Phillips head screwdriver, 11/32" spin-tite or socket, 7/16" end wrench or socket. The elements of the antenna are pre-assembled from the factory.



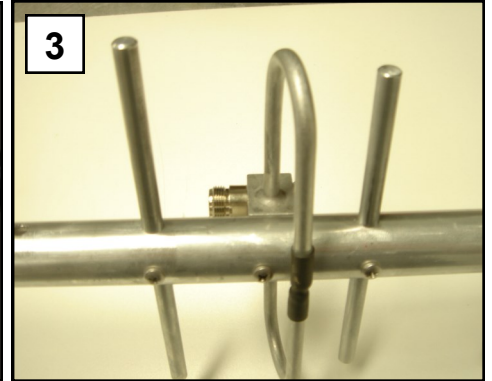
### Step 1:

The assembly will be started at the rear of the boom section.



### Step 2:

Attach the folded dipole to the rear boom section by sliding the unit back and forth until it is in place.



### Step 3:

It may be necessary to remove the first element to slide the dipole in place. Attach the dipole with an 8-32 x 1 1/4" screw.



### Step 5:

Attach the mounting U-bolt and Cradle in the correct polarity holes. Use the two 1/4-20 hex nuts and lock washers. **It is highly recommended to use a lubricant like WD-40 on the threads of the U-bolt. Stainless material will seize if not lubricated.**

# 911-ISP PARTS & HARDWARE

## DESCRIPTION ..... QTY

|   |   |
|---|---|
| BOOM, 1.0" X .063 X 17.9375" ALUM ..... | 1 |
| ELEMENTS, 5/16" (INSTALLED).....        | 4 |
| FOLDED DIPOLE ASSEMBLY .....            | 1 |
| U-BOLT, 2", SS & UNI-SADDLE .....       | 1 |
| ASSEMBLY MANUAL.....                    | 1 |

## IN HARDWARE BAGS:

|                                      |   |
|--------------------------------------|---|
| NUT, 1/4-20, SS .....                | 2 |
| LOCKWASHER, 1/4" SPLIT RING SS ..... | 2 |
| SCREW, 8-32 X 1-1/4", SS .....       | 1 |

## M<sup>2</sup> ANTENNA SYSTEMS, INC.

4402 N. SELLAND AVE.

FRESNO, CA 93722

(559) 432-8873 FAX: 432-3059

[www.m2inc.com](http://www.m2inc.com) Email: [sales@m2inc.com](mailto:sales@m2inc.com)