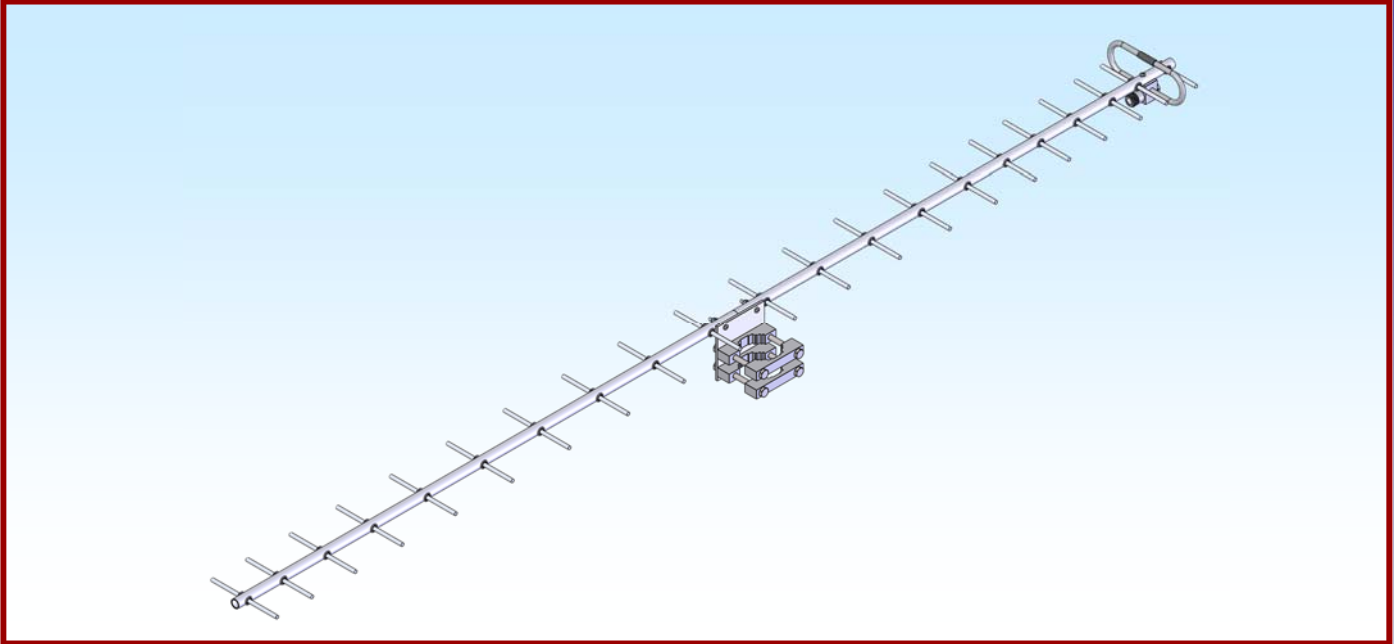




M2 Antenna Systems, Inc. Model No: 1375-22



SPECIFICATIONS:

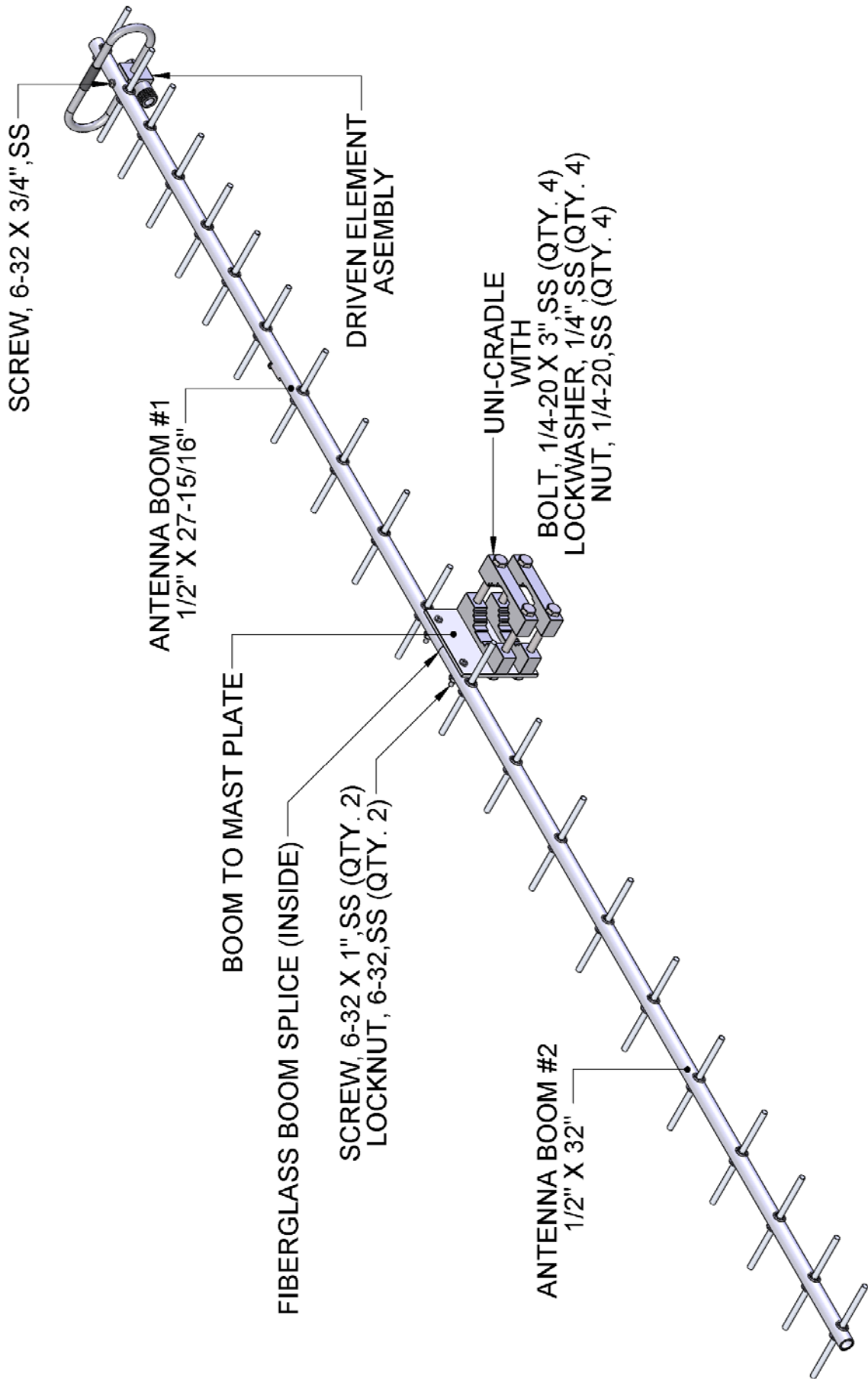
Model	1375-22	Input Connector	"N" Female
Frequency Range	1350 To 1400 mHz	Power Handling	500 Watts
Gain	18.0 dBi	Boom Length / Dia	60" / 1/2"
Front to back	26 dB Typical	Turning Radius	33"
Beamwidth	E=22° H=24°	Stacking Distance	20"
Feed type	Folded Dipole	Mast Size	1-1/4" to 2"
Feed Impedance	50 Ohms Unbalanced	Wind area / Survival	0.14 Sq. Ft. / 100MPH
VSWR	1.2:1 Typical	Weight / Ship Wt.	1 Lbs. / 3 Lbs.

***Subtract 2.14 from dBi for dBd**

FEATURES:

The **1375-22** is a high gain, Folded Dipole Fed Yagi. Computer optimized for use in the 1350-1400 MHz band. The gain peaks @ 18.4 dBi @ 1375 mHz, but stays above 18 dBi for 50 mHz. VSWR is equally flat, fluctuating across the band from -18 to -20dB return loss. The Antenna can be rear mounted as an option allowing, easy polarity variation and shorter phasing + feedlines, if stacked just 20" apart a gain over 21 dBi can be achieved.

1375-22 ASSEMBLY MANUAL



1375-22 PARTS & HARDWARE

DESCRIPTION.....	QTY
1375-22 BM #1 W/ELEMENTS, 1/2" X 27-15/16", FIBERGLASS	1
1375-22 BM#2, W/ELEMENTS, 1/2" X 32", FIBERGLASS	1
1375-22 BOOM SPLICE, 13/32" X 2-1/2", FIBERGLASS	1
1375-22 BOOM TO MAST PLATE, 3" X 3" X 1/8"	1
1375-22 DRIVEN ELEMENT DIPOLE ASSEMBLY.....	1
UNI-CRADLE, (M2AMC0076)	4
ASSEMBLY MANUAL	1

IN HARDWARE BAGS:

BOLT, 1/4-20 X 3.25", HEX HD, SS	4
BOLT, 1/4-20 X 2.75", HEX HD, SS	4
BOLT, 1/4-20 X 2.25", HEX HD, SS	4
LOCKWASHER, 1/4", SS	4
LOCKNUT, 1/4-20,SS	4
SCREW, 6-32 X 3/4", PH PHL, SS.....	1
SCREW, 6-32 X 1", PH PHL,SS.....	2
LOCKNUT, 6-32, SS	2

M² ANTENNA SYSTEMS, INC.

4402 N. SELLAND AVE.

FRESNO, CA 93722

(559) 432-8873 FAX: 432-3059

www.m2inc.com Email: sales@m2inc.com