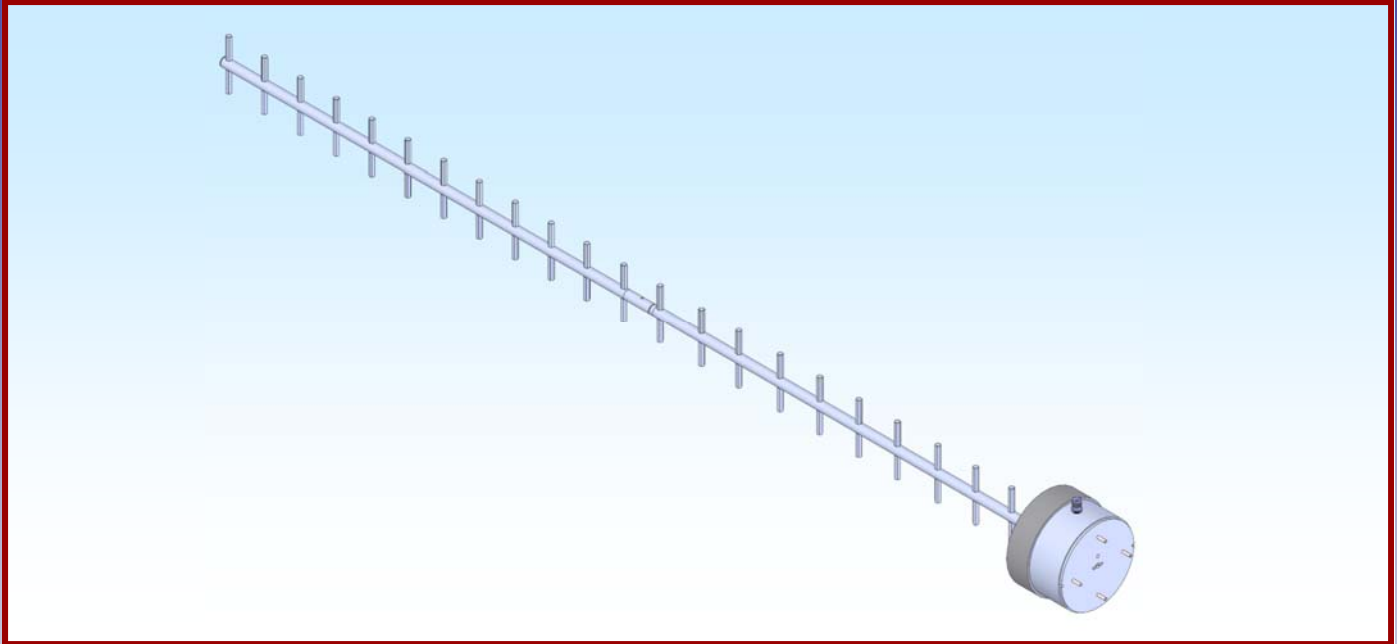




M2 Antenna Systems, Inc. Model No: 1802-26CFC



SPECIFICATIONS:

Model	1802-26CFC	Input Connector	TNC Female
Frequency Range.....	1755-1850 MHz Cont.	Power Handling	250 Watts
*Gain	18.3 dBi Typical Average	Boom Length / Dia.....	53" / 1/2"
Front to back	27 dB Typical Average	Antenna Finish	Chem. Film Clear
Beamwidth /26 ele	E=21°/H=22°	Wind area / Survival	0.3 Sq. Ft. / 80 MPH
Beamwidth /35 ele.....	E=17°/H=18°	Weight / Ship Wt.....	2 lbs. / 10 lbs.
Feed Impedance.	50 Ohms Unbalanced		
Maximum VSWR.....	>1.5:1 AVG.		
Mounting Polarity	Horizontal or Vertical		

***Subtract 2.14 from dBi for dBd**

FEATURES:

The 1802-26CFC is a rugged man packable high gain yagi type, horn fed antenna that can provide high performance between the frequencies of 1755 MHz and 1850 MHz. The elements are made from aluminum 1/4 hex and are large enough not to be damaged by man packing or the outside elements. The antenna is broken apart in near equal sections using a unique no tools bayonet type connection that allows quick assembly or disassembly. The antenna can be used with just 2 element sections in place, that keeps the package down to a manageable 53 inches long. But if extra gain is needed, just add the last element section for a little extra gain for the fringe situations. The 1802-26CFC uses a unique horn to excite the elements and achieve amazing gain. The horn comes with a face cover to protect the horn probe inside and gives a clean storage cup after disassembly.