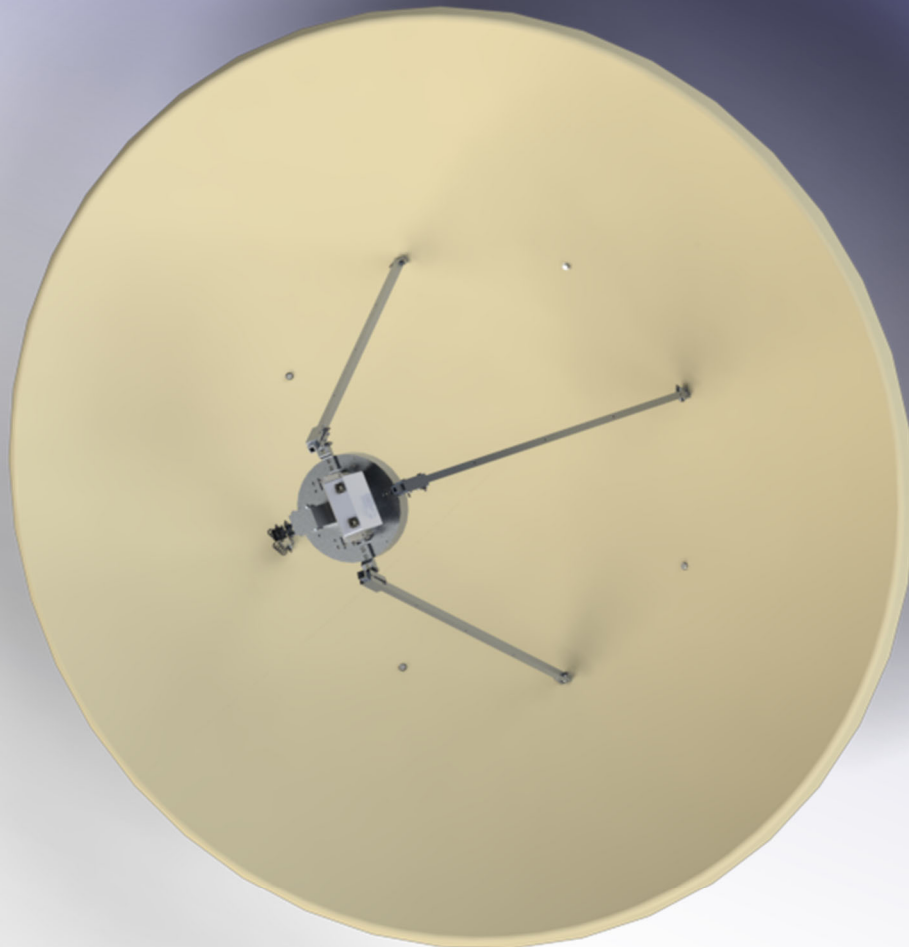




**M2 ANTENNA SYSTEMS, INC.**  
**MODEL NO: FGDFS2008**  
**8' DH SATELLITE DISH**  
**SC AND XC DUAL BAND FEED**



**M2 ANTENNA SYSTEMS, INC. 4402 N. SELLAND AVE. FRESNO, CA 93722**  
**TEL: (559) 432-8873 FAX: (559) 432-3059 WEB: WWW.M2INC.COM**  
©2020 M2 ANTENNA SYSTEMS INCOPORATED

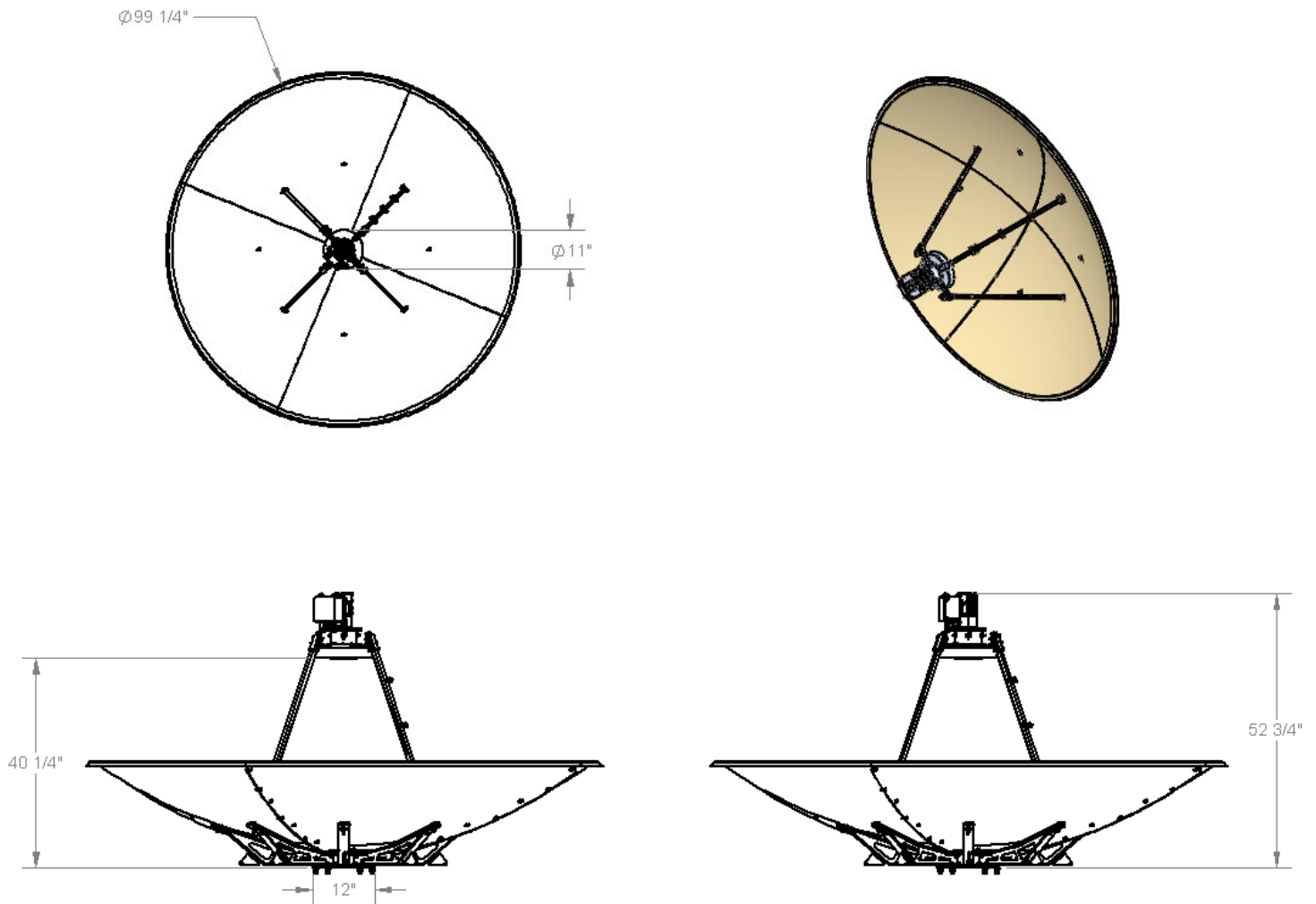
11/15/2020  
REV A

# FEED INSTALLATION

**BEFORE YOU BEGIN:** Look over all the DRAWINGS to get familiar with the various parts and assemblies in the system. Tools handy for assembly process: 11/32", 7/16", 1/2", 9/16" and 5/8" spin-tites, end wrenches and/or sockets.

**NOTE:**

*All installations are unique in some way, which means it's OK to preassemble certain hardware, or rearrange the assembly process to meet specific site requirements. A quick review of the assembly notes and drawings should help firm up the appropriate strategy. Please remember to double-check all hardware for tightness BEFORE it becomes inaccessible.*



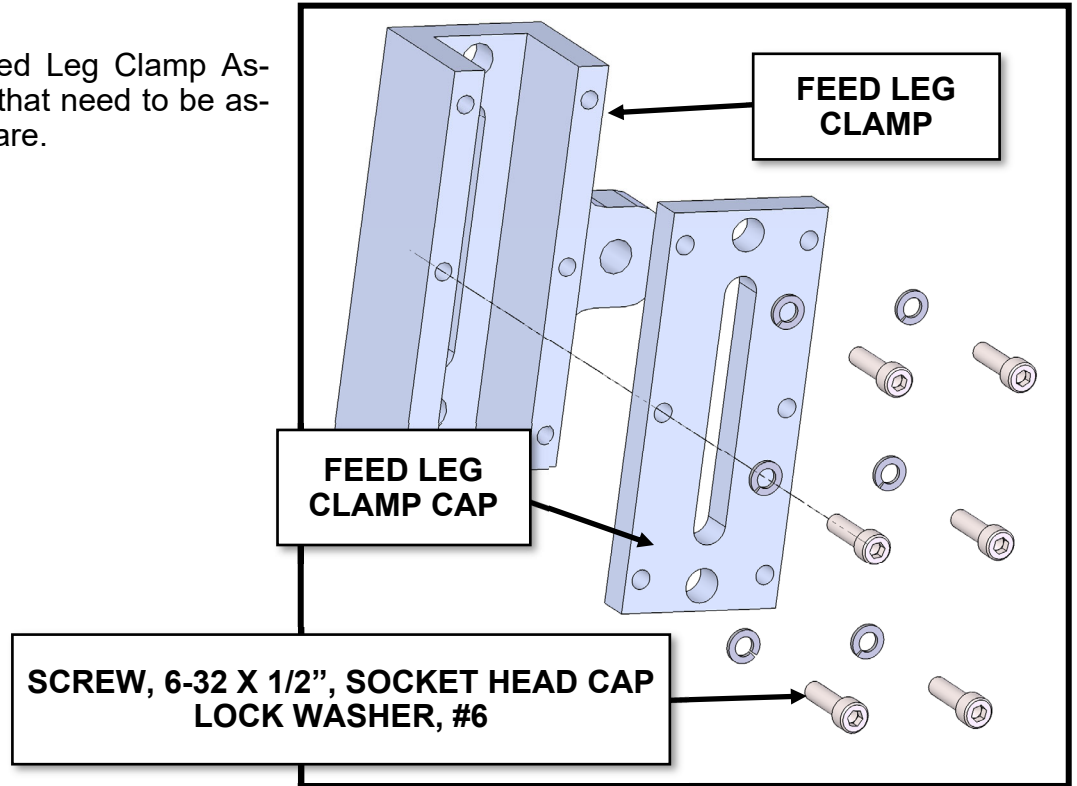
**NOTE:**

*The Feed Legs from the previous system will need to be replaced. Although very similar in length, the new feed legs are design to optimize the focal distance of the new dual band feed.*

# FEED INSTALLATION

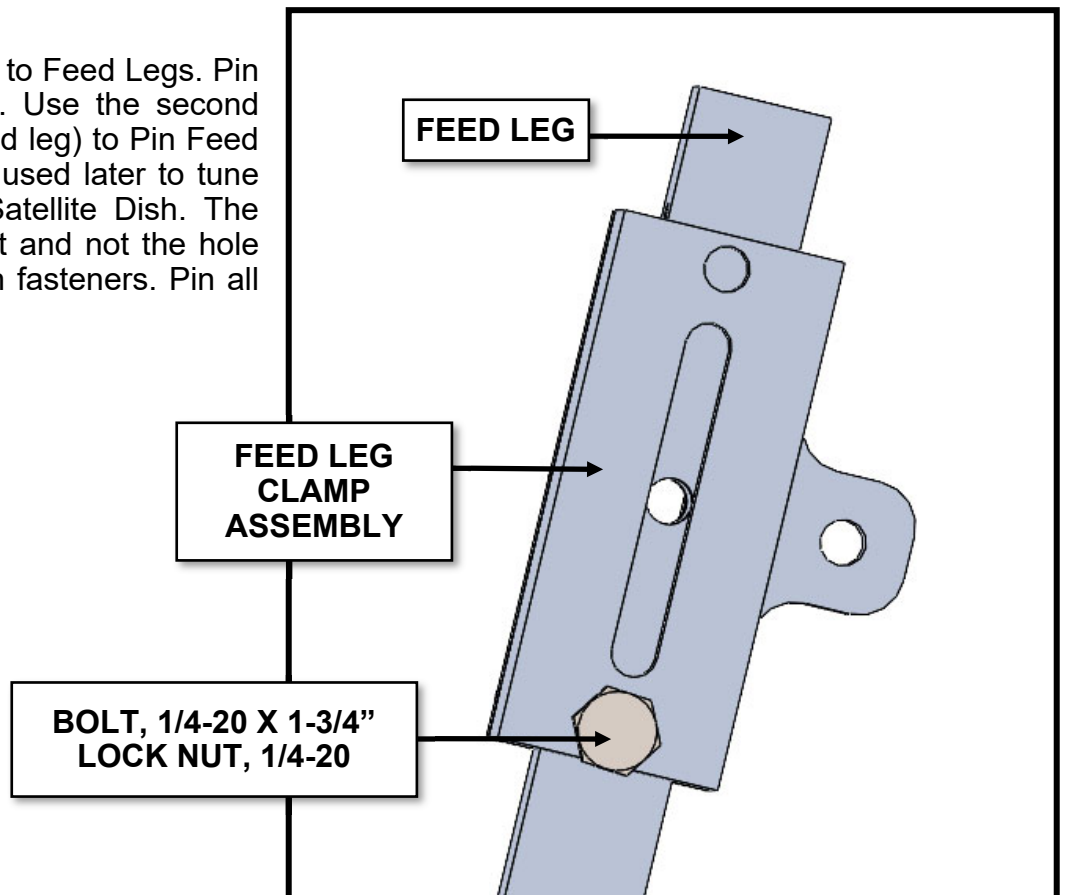
## **STEP 1:**

Preassemble the Feed Leg Clamp Assemblies. There are 4 total that need to be assembled. Tighten all hardware.



## **STEP 2:**

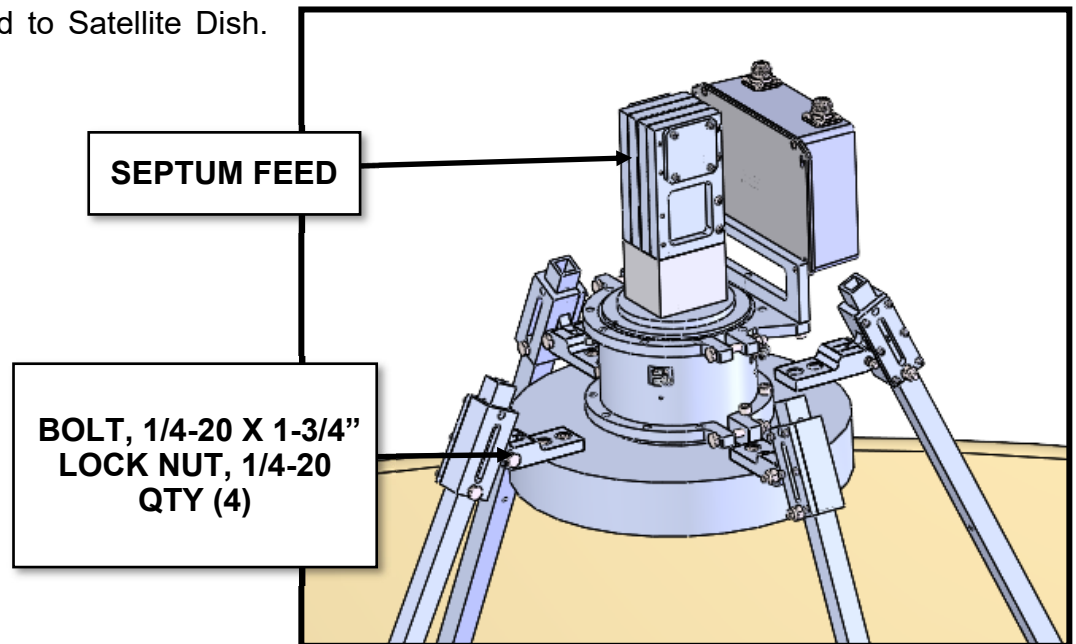
Pin Feed Leg Clamps to Feed Legs. Pin with bolt, washers, and nut. Use the second hole (closest to center of feed leg) to Pin Feed Leg. The other hole can be used later to tune the Feed distance to the Satellite Dish. The second hole will use the slot and not the hole to pin the Feed Leg. Tighten fasteners. Pin all the Feed Legs.



# FEED INSTALLATION

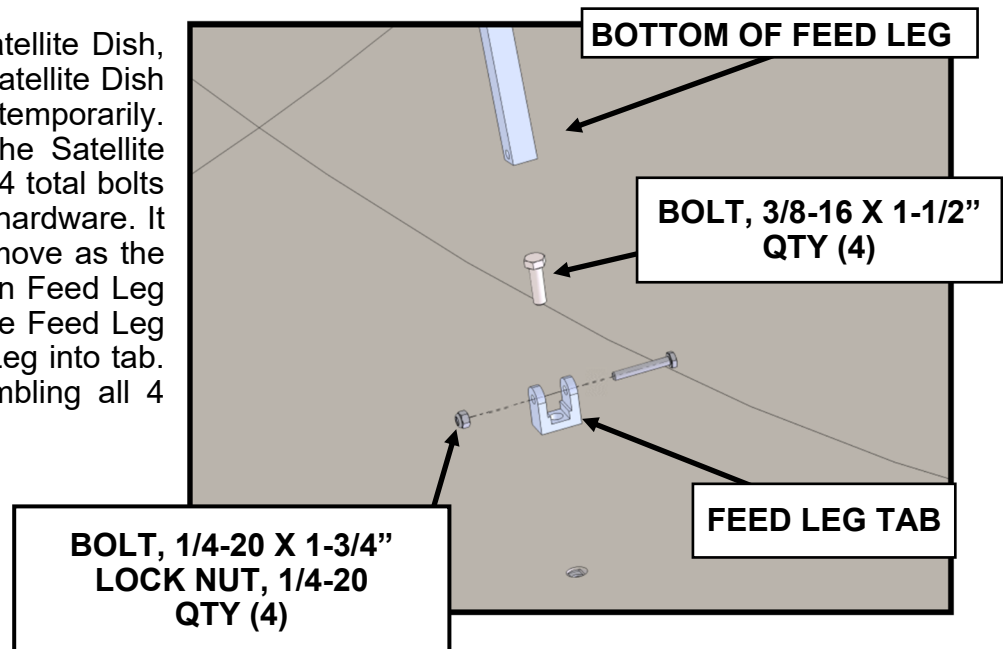
## STEP 3:

Pin the Feed Leg and Clamp Assembly to the Septum Feed. Leave loose until bottom of the Feed Leg is mounted to Satellite Dish. Pin all Feed Legs.



## STEP 4:

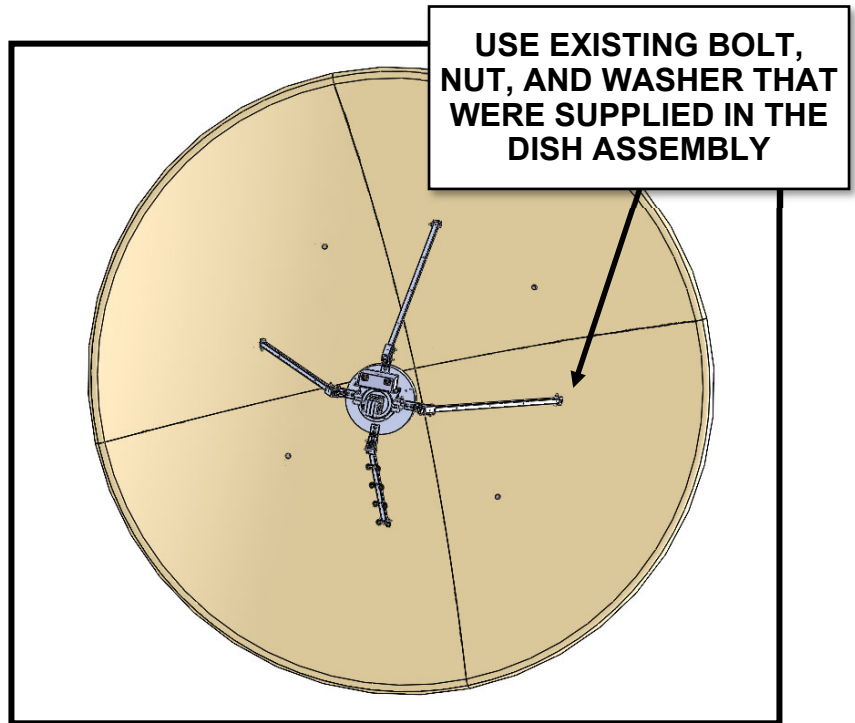
To mount the Feed to the Satellite Dish, existing hardware used during the Satellite Dish Assembly will need to be removed temporarily. Remove every other bolt holding the Satellite Dish to the Mount. There should be 4 total bolts that need to be removed. Keep the hardware. It does not matter which bolts you remove as the Feed orientation is not dependent on Feed Leg placement. Feed the bolt through the Feed Leg Tab. Insert the bottom of the Feed Leg into tab. Pin with hardware. Continue assembling all 4 Feed Leg Tabs.



# FEED INSTALLATION

## **STEP 5:**

Mount the Feed Assembly onto the Satellite Dish. It is recommended for ease of installation to manipulate the Satellite Dish to **0** degrees in elevation. Insert bolts through the Satellite Dish holes. Tighten nuts holding the Feed Assembly. Tighten all hardware for the Feed Assembly as well as the Satellite Dish Mount.

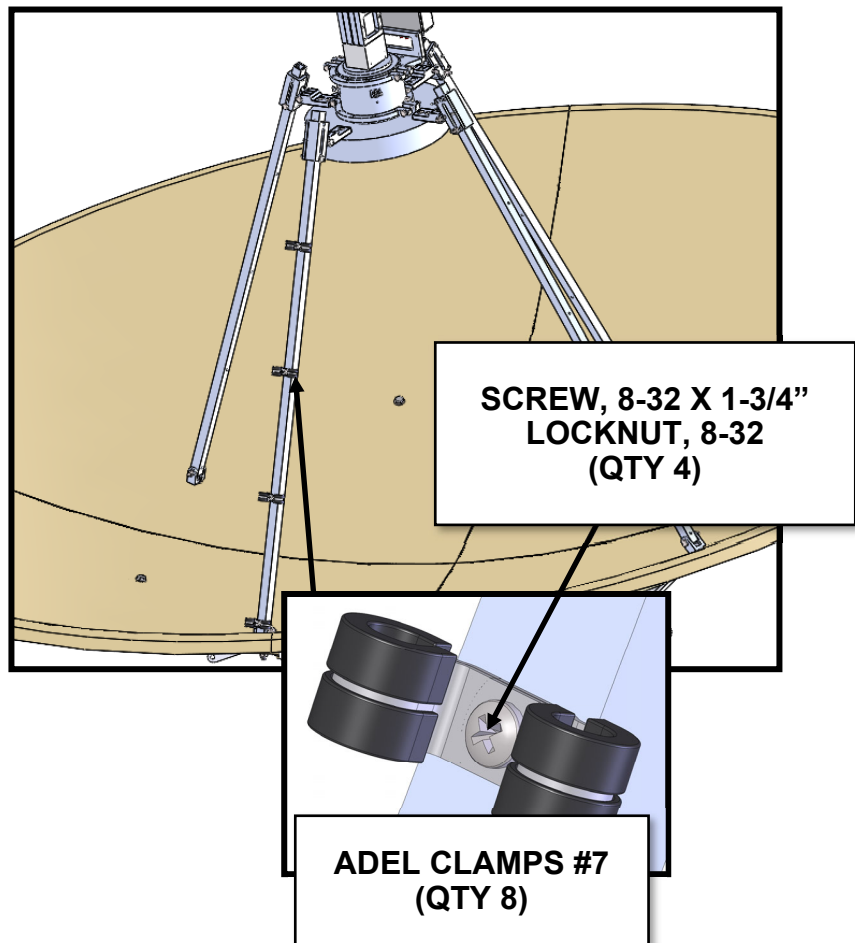


## **STEP 6:**

Install Adel Clamps to bottom Feed Leg to route Feed Cable.

### **NOTE:**

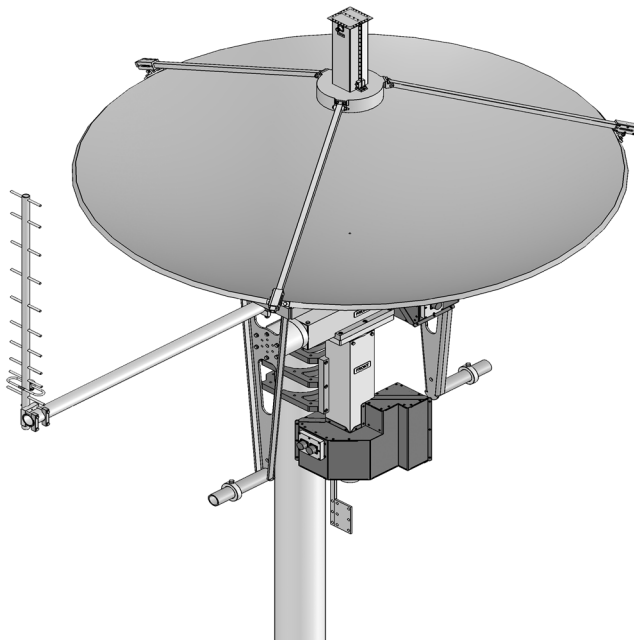
*Cabling for the Feed can be routed down one of the Feed Legs and over the rim of the Satellite Dish or a 2" hole can be cut into the Satellite Dish near the bottom of the Feed Leg used to route the cable.*



# FGDFS2008 PARTS LIST

<u>DESCRIPTION</u>	<u>QTY</u>
DUAL BAND FEED, S AND X CIRCULAR, FGFD-2-SC-XC-1 .....	1
FEED LEG TAB (M2ASD0031).....	4
FEED BRACKET, UPPER, (M2AFD0003).....	4
FEED LEG CLAMP, (M2AAE1631).....	4
FEED LEG CLAMP CAP, (M2AAE1632) .....	4
FEED LEG, 8' DH DISH, (M2ASD0066) .....	4
ADLE CLAMP #7 .....	8
 <b><u>HARDWARE</u></b>	
BOLT, 3/8-16 X1.5, HX HD SS .....	4
NUT, 3/8-16 SS.....	4
LOCK WASGER, 3/8 SS.....	4
BOLT, 1/4-20 X 1.750 HX HD SS .....	12
BOLT, 1/4-20 X 0.5 SHCS HD SS .....	8
LOCK NUT, 1/4-20 SS.....	12
SCREW, 8-32 X 1.25 PH SS .....	4
LOCK NUT, 8-32 SS.....	4
SCREW, 6-32 X .375 SHCS SS .....	24
LOCK WAHER, #6 SS .....	24

# 12 MONTH LIMITED WARRANTY



**THIS WARRANTY GIVES YOU SPECIFIC LEGAL RIGHTS. YOU MAY ALSO HAVE OTHER RIGHTS WHICH WILL VARY FROM STATE TO STATE OR PROVINCE TO PROVINCE.**

**M2 WARRANTS ITS PRODUCTS AGAINST DEFECTS IN MATERIAL AND WORKMANSHIP FOR A PERIOD OF 12 MONTHS FROM DATE OF PURCHASE. DURING THE WARRANTY PERIOD, M2 WILL, AT ITS OPTION, EITHER REPAIR OR REPLACE THE PRODUCTS OR COMPONENTS WHICH PROVE TO BE DEFECTIVE. THE WARRANTY SHALL NOT APPLY TO DEFECTS OR DAMAGE RESULTING FROM:**

- **IMPROPER OR INADEQUATE MAINTENANCE BY USER**
- **IMPROPERLY PREPARED INSTALLATION SITE**
- **UNAUTHORIZED MODIFICATIONS OR MISUSE**
- **ACCIDENT, ABUSE, OR MISAPPLICATION**
- **NORMAL WEAR**

**M2 SPECIFICALLY DOES NOT WARRANT THIS PRODUCT FOR ANY DIRECT, INDIRECT, CONSEQUENTIAL, OR INCIDENTAL DAMAGES ARISING FROM THE USE OR INABILITY TO USE THE PRODUCT. SOME STATES OR PROVINCES DO NOT ALLOW THE EXCLUSION OR LIMITATION OF LIABILITY FOR CONSEQUENTIAL OR INCIDENTAL DAMAGES SO THE ABOVE LIMITATION MAY NOT APPLY.**

**IN THE EVENT REPAIR OR REPLACEMENT ARE NECESSARY, PURCHASER SHALL CONTACT M2 FOR RETURN AUTHORIZATION. IN MANY CASES THIS CONTACT CAN SIMPLIFY AND EXPEDITE THE REPAIR / REPLACEMENT PROCESS AND HELP REDUCE COSTS AND DOWNTIME.**

**THE PURCHASER SHALL BE RESPONSIBLE FOR PACKING THE PRODUCT PROPERLY FOR RETURN AND FOR CHARGES TO SHIP THE PRODUCT TO M2. ALWAYS INCLUDE WITH THE SHIPMENT, A STATEMENT DETAILING THE PROBLEM / FAILURE AND ANY OTHER PERTINENT OBSERVATIONS. INSURING THE PRODUCT FOR SHIPMENT IS RECOMMENDED. USE THE ORIGINAL PACKING MATERIALS WHENEVER POSSIBLE. M2 IS RESPONSIBLE FOR CHARGES (IN THE UNITED STATES) TO RETURN THE REPAIRED / REPLACEMENT PRODUCT ONLY WHERE WARRANTY SERVICE IS INVOLVED.**