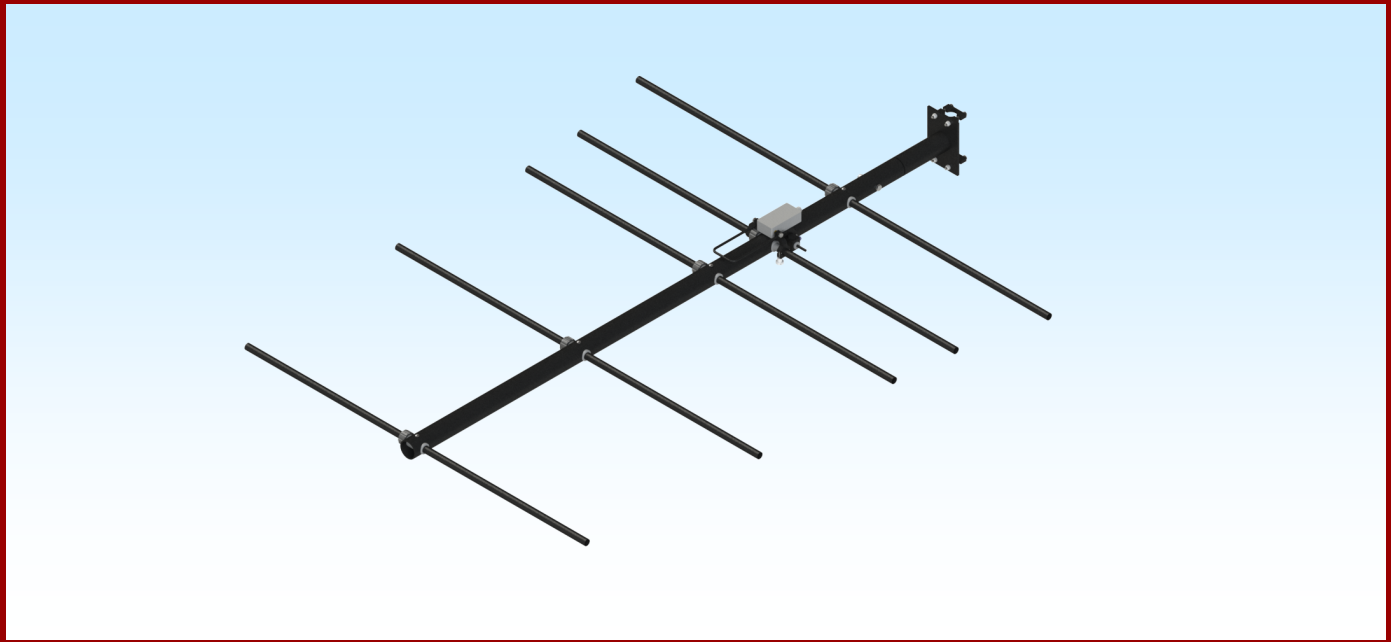




M2 Antenna Systems, Inc.

108-113 MHz LINEAR YAGI

Model No: FG112-5QD



SPECIFICATIONS:

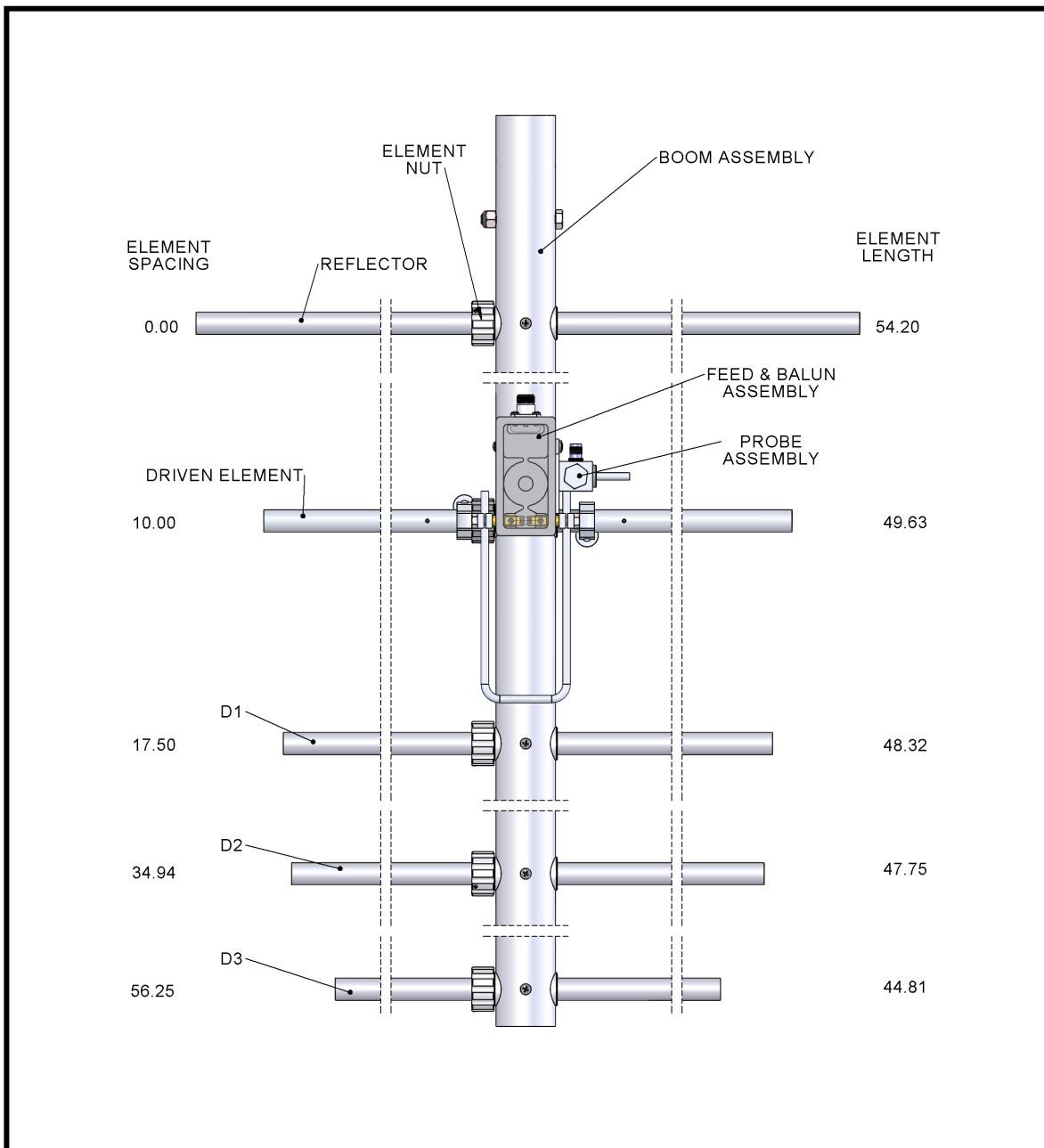
Model	FG112-5QD	Power Handling	1 KW
Frequency Range	108 To 113 MHz	Boom Length / Dia	64-1/2" / 2"
*Gain, (FS) / Over Ground	9.6 dBi	Maximum Element Length.....	26"
Front to back	20 dB	Turning Radius:	74-1/4"
Beamwidth	E= 58° & H= 66°	Stacking Distance	86" High
Feed type	T Match	Mast Size	1-1/4" Nom.
Feed Impedance	50 Ohms Unbalanced	Wind area / Survival	1.18 Sq. Ft. / 100 MPH
Maximum VSWR.....	1.5:1 Typical	Weight / Ship Wt.....	10 Lbs. / 15 Lbs.
Input Connector	"N" Female		

***Subtract 2.14 from dBi for dBd, FS = Free Space**

FEATURES:

The FG112-5QD is an exceptional antenna with a sturdy mechanical design and computer optimized for the best overall performance. Designed for quick deployment, this antenna can be installed in the field without any tools. The antenna is black anodized and constructed with a heavy duty boom, which will provide optimized performance for years to come.

FG112-5QD ASSEMBLY DETAIL

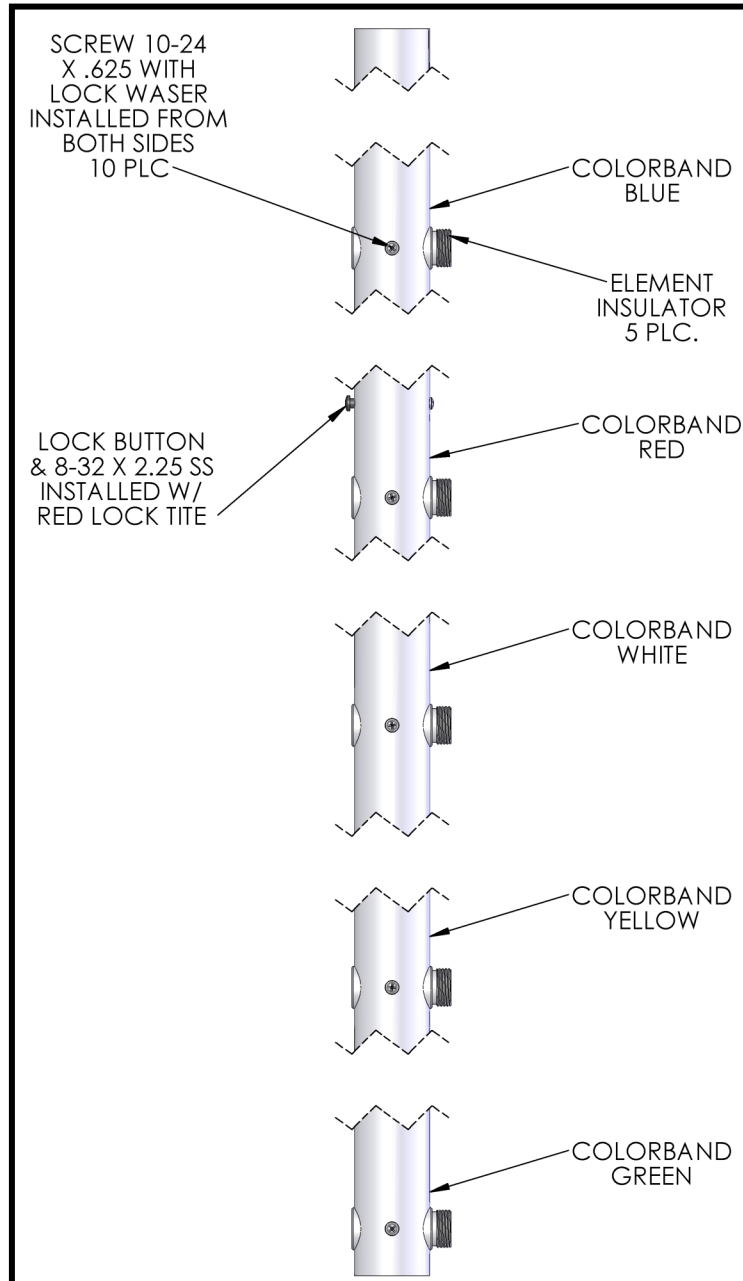


DESCRIPTION.....	QTY
BOOM ASSEMBLY (SABM112QD-2)	1
ELEMENT ASSEMBLY, REFLECTOR 3/4" X 54.20" (BLUE).....	1
ELEMENT ASSEMBLY, DE. 3/4" X 49.63" (RED).....	1
ELEMENT ASSEMBLY, D1. 3/4" X 48.32" (WHITE)	1
ELEMENT ASSEMBLY, D2. 3/4" X 47.75" (YELLOW)	1
ELEMENT ASSEMBLY, D3. 3/4" X 44.81" (GREEN)	1
BALUN ASSEMBLY (SABAL1125QD).....	1

OPTIONAL	
BOOM TO MAST ASSEMBLY (SABTM0001).....	1

BOOM ASSEMBLY DETAIL

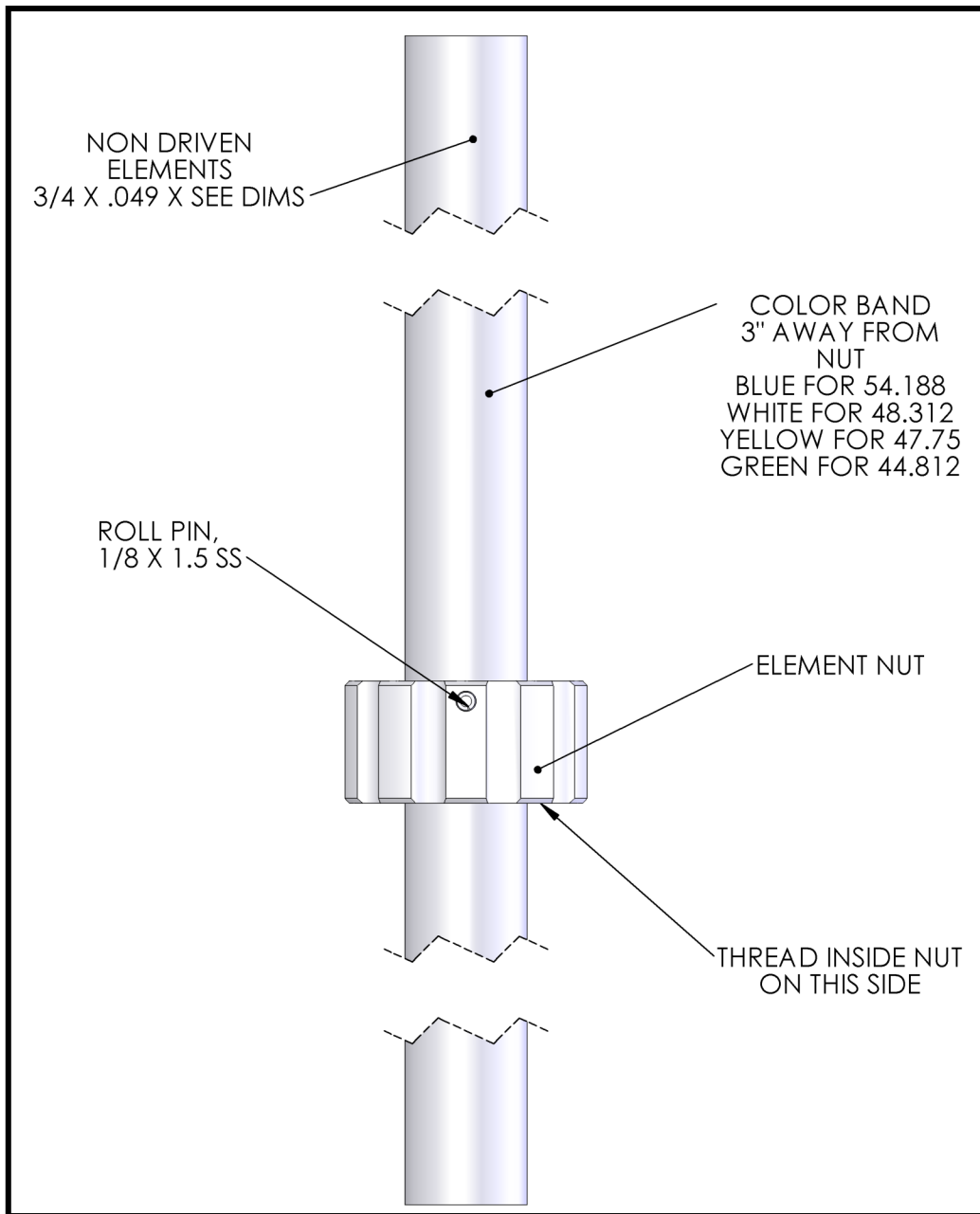
SABM1125QD-2



DESCRIPTION.....	QTY
BOOM SECTION, 2.0" X .125" X 64.5" (M2ABS1125QD-2).....	1
ELEMENT INSULATOR (M2ADP0112).....	5
LOCK BUTTON, SS (M2ADP0122).....	1
SCREW, 8-32 X 2.25", PHILLIPS PAN HEAD, SS	1
SCREW, 10-24 X .625", PHILLIPS PAN HEAD, SS	10
LOCK WASHER, #10, SS	10

ELEMENT ASSEMBLY DETAIL

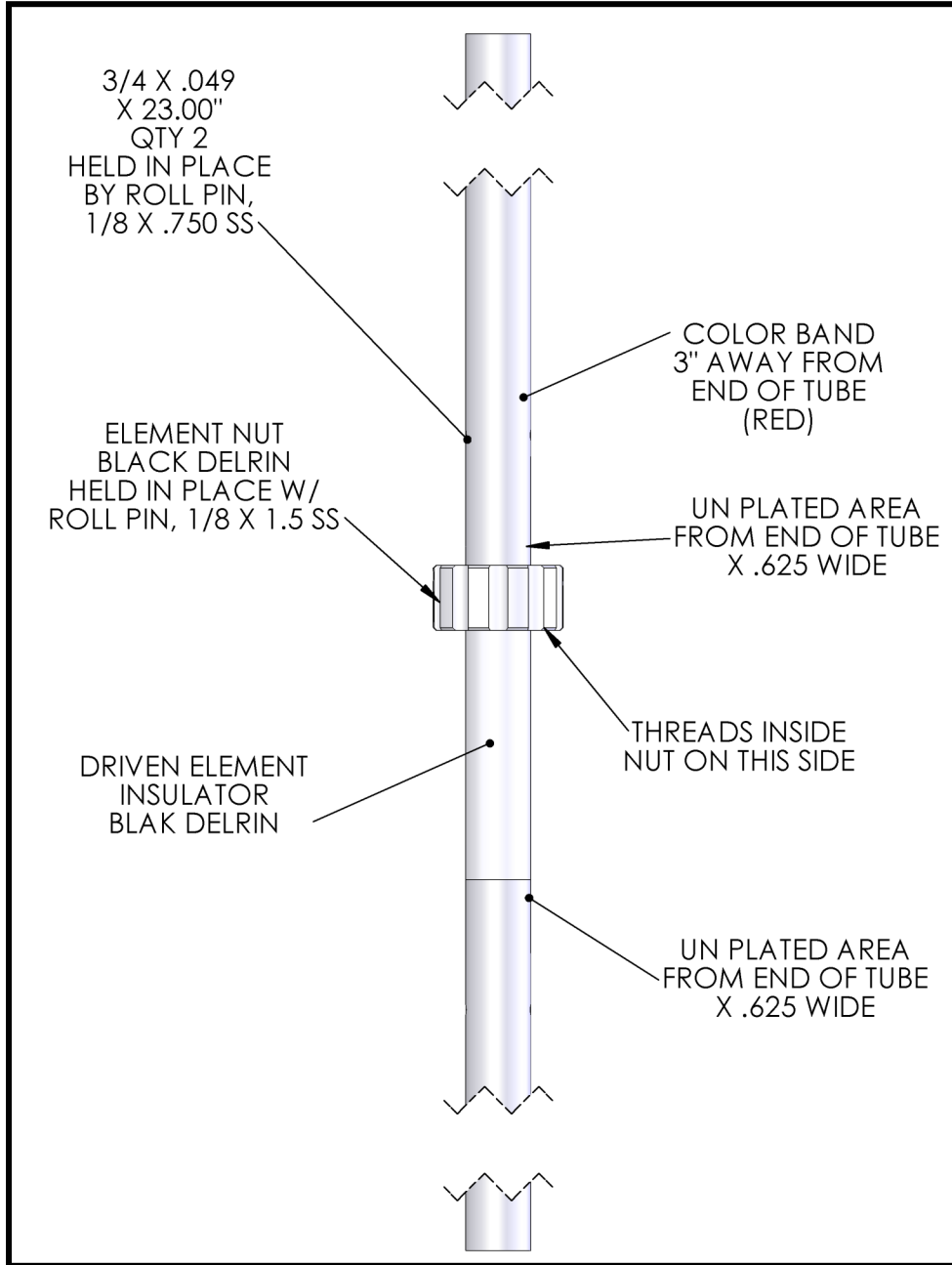
SAEL1125QD-1



DESCRIPTION	QTY
REFLECTOR ELEMENT—BLUE, .750" X .049" X 54.188"	1
DIRECTOR #1 ELEMENT— WHITE, .750" X .049" X 48.313"	1
DIRECTOR #2 ELEMENT— YELLOW, .750" X .049" X 47.75"	1
DIRECTOR #3 ELEMENT— RED, .750" X .049" X 44.812"	1
ELEMENT NUT (M2AEP0002)	4
ROLL PIN, 1/8" X 1-1/2", SS (HMS1000755)	4

DRIVEN ELEMENT DETAIL

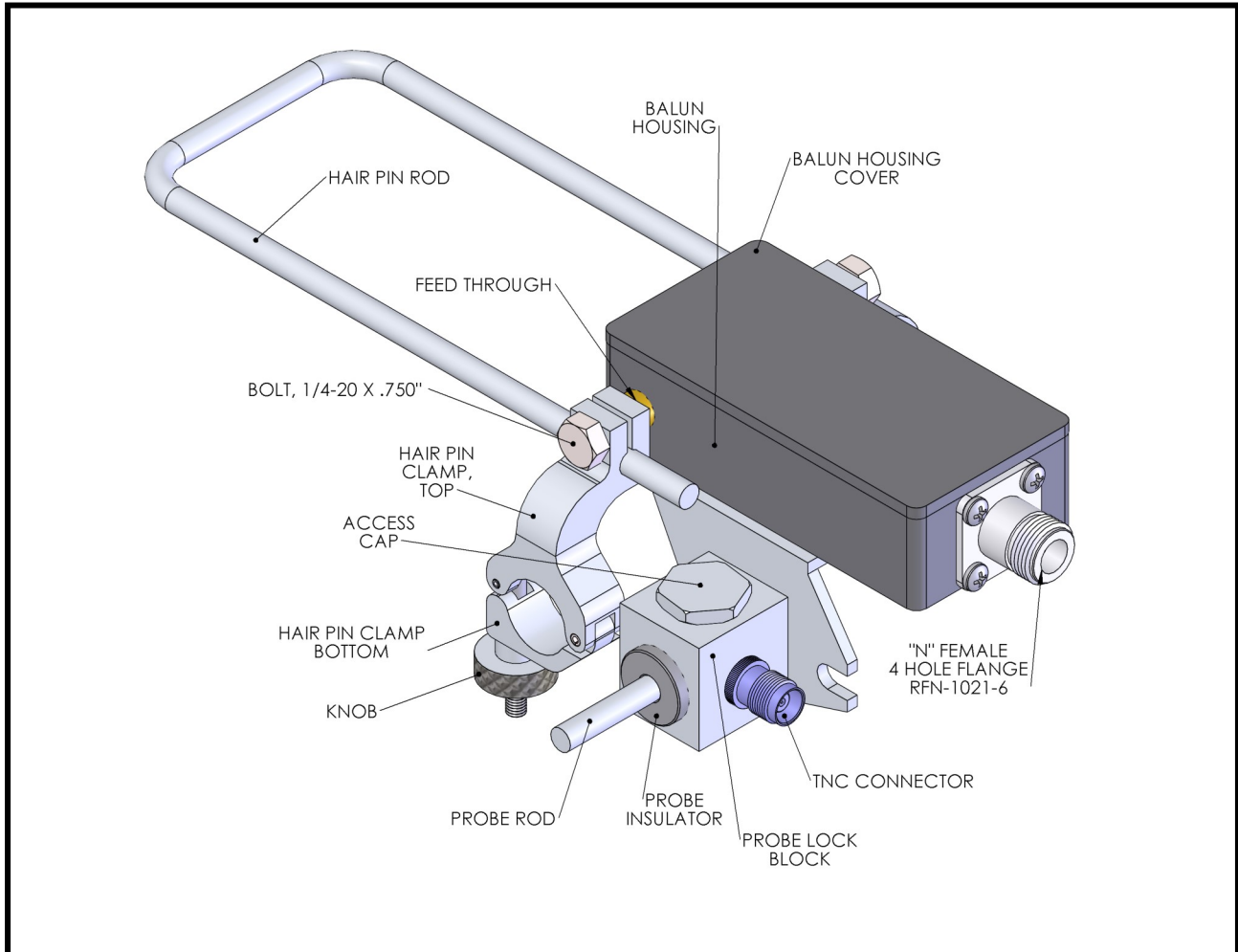
SADEA1125QD



DESCRIPTION.....	QTY
DRIVEN ELEMENT—RED (M2ADP0113).....	2
DRIVEN ELEMENT INSULATOR, DELRIN (M2ADP0114).....	1
ELEMENT NUT, DELRIN (M2AEP0002).....	1
ROLL PIN, 1/8" X 3/4", SS (HMS10000752).....	2
ROLL PIN, 1/8" X 1-1/2", SS (HMS10000755).....	1

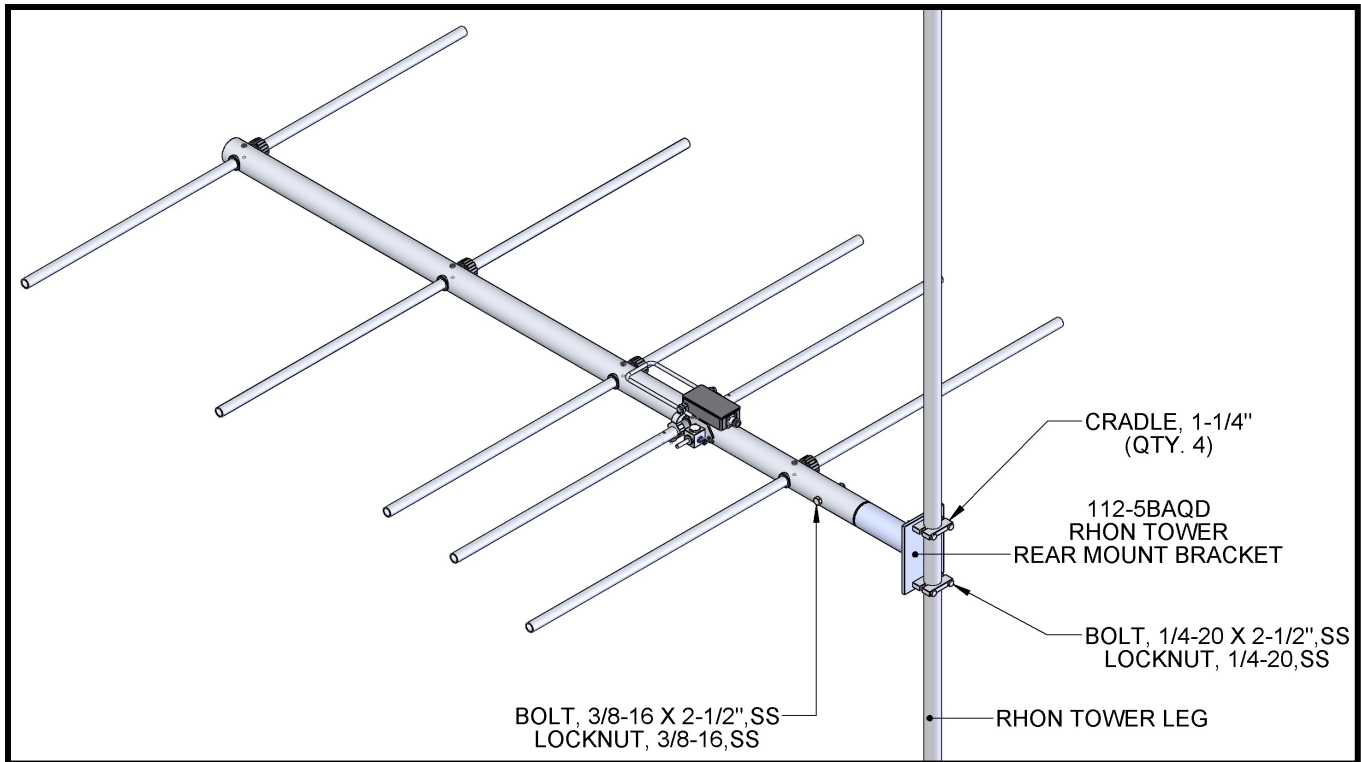
BALUN ASSEMBLY DETAIL

SABAL1125QD



DESCRIPTION.....	QTY
PROBE ASSEMBLY (SADEA1125QD-PB).....	1
BALUN HOUSING, ABS (M2ABP0001).....	1
BALUN HOUSING COVER, ABS (M2ABP0003).....	1
FEED THROUGH POST, NICKEL PLATED BRASS (M2ABP0002).....	2
HAIR PIN CLAMP ASSEMBLY.....	2
COAXIAL CABLE, RG303 X 12".....	1
WIRE, TEFLON 14 GAUGE X 11".....	1
"N" CONNECTOR, 4 HOLE FLANGED (CONRFN1021).....	1
SCREW, #8 X 1/2", PHILLIPS PAN HEAD, SHEET METAL, SS.....	2
SCREW, 4-40 X 1/2", PHILLIPS PAN HEAD, SS.....	4
LOCKNUT, 4-40, SS.....	4
HAIR PIN ROD (M2ADP0019).....	1

RHON TOWER OPTION *SABTM0001*



DESCRIPTION	QTY
BOOM MOUNT ASSEMBLY (SABM1125QD-1).....	1
MACHINED CRADLE, 1-1/4" (M2AMC0121).....	4
BOLT, 3/8-16 X 2-1/2", HEX HEAD, SS.....	1
LOCKNUT, 3/8-16, SS.....	1
BOLT, 1/4-20 X 2-1/2", HEX HEAD, SS.....	4
LOCKNUT, 1/4-20, SS.....	4