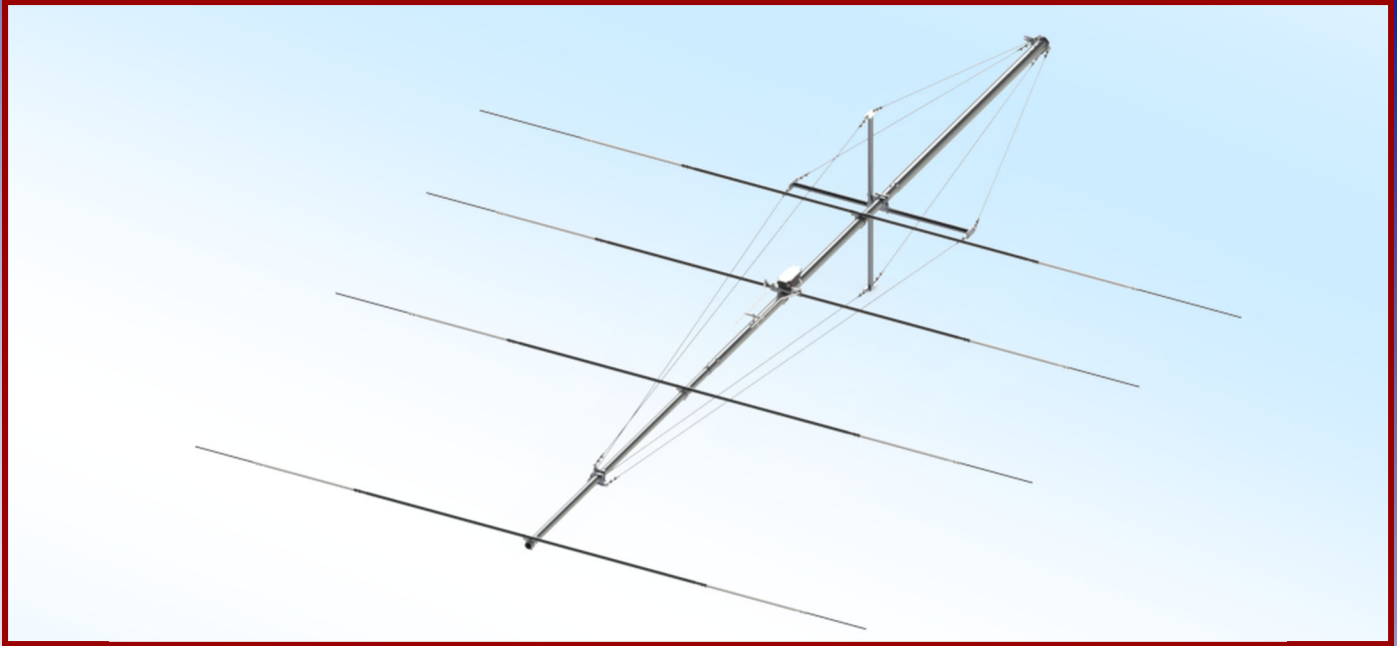




M2 Antenna Systems, Inc.

Model No FG30-4



SPECIFICATIONS:

Model	FG30-4	Boom Length / Dia	22' / 3.0" To 2"
Frequency Range	29.750 to 30.250MHz	Element Length / Dia	17 Ft. / 1" To 1/2"
*Gain	9.2dBi	Turning Radius:	28.75 Ft.
Front to back	20 dB	Mast Size	2" to 3" Nom.
Beamwidth	E=60°	Wind area / Survival	6 Sq. Ft. / 100 MPH
Feed type	Hair pin match	Weight / Ship Wt.	58 Lbs. / 68 Lbs.
Feed Impedance	50 Ohms Unbalanced		
VSWR	1.3:1 typ. 2:1 max		
Input Connector	SO-239 Others optional		
Power Handling	3 kW Higher Opt.		

***Subtract 2.14 from dBi for dBd**

FEATURES:

The FG30-4 is a rugged rear mount 4 element Yagi type antenna that was specifically designed and built for one of our Commercial Customers. This rugged design was meant for high power short term ship board operation. The FG30-4 features machined element to boom clamps, quad guy wire system and high power 5 KW continuous operation balun. The guy support uses aramid fiber guywire material and rugged guy wire attachment points. If properly maintained the FG30-4 could withstand years of operation in any operation. When looking for a simple Yagi or a antenna with complex requirements and or strange application, look no further than M2 antenna Systems Inc.

FG30-4 ASSEMBLY NOTES

General note: Always use Penetrox paste on all aluminum to aluminum connection as this will insure a long term secure RF connection. It is also recommended to use a small amount of the Penetrox paste or lubricant on all stainless steel hardware to avoid galling. It would be handy to have 4 bucks or saw houses available during some of the assembly process.

The FG30-4 comes partially assembled from the factory. There will be a main boom assembly with the element to boom clamps (ring clamps) and guy attachment points pre-assembled. The basic assembly steps are to add the elements to the boom assembly, add the balun and feed components to the antenna, add the over head guy supports to the boom and install to the tower. Below are details in specific areas of concern.

1. Inspecting the boom assembly

With the boom assembly sitting on a raised surface or saw horses, inspect the boom assembly for any damage during shipping and repair as needed. Note: the boom is marked with labels that depict the center guy a position, and rear of the boom along with the BTM plate position. Note the different sizes of element to boom clamps (ring clamps).

2. Element installation

The complete element set should be wrapped with stretch wrap. Unpack the elements, inspecting during removal. Each element will be labeled denoting the element. The **Reflector** is the most rear element, then moving forward would be the **Driven Element**, next would be the **Director 1** and the most forward element is **Director 2**. The matching element simply slides onto the .875 x .058 x 30" sleeve and bolts down to the element clamp, except for the driven element. Do not install the driven element at this point. Note: there are different hole patterns in the 7/8 x 30 tubes, the narrow hole pattern fits the 2" ring clamp and the wider hole pattern fits the 2.5 ring clamp. See the element mounting detail for hardware sizes.

3. Driven element and balun assembly

Start by assembling the balun assembly. Refer to the balun assembly detail, add the balun mounting bracket and hardware, do not over tighten. Do not install the balun straps at this point. Refer to the driven element detail for the appropriate hardware and start by mounting the fiber glass insulator and balun assembly to the ring clamp. Slide on the disc insulators onto each end of the fiber glass rod and push them firm up against the ring clamp. Add each driven element half assembly to each side of the fiber glass rod insulator. Insert the 1/4" hardware from the underside up thru the fiber glass. Add the 3/8 clamp blocks and non-locking 1/4 nut, creating a stud. Keep loose at this point. assemble the shorting bar, hair pin spacer and hose clamp to the boom of the antenna at the approximate shorting bar position. Add the hair pin tubes as shown in the detail and tighten the bolts creating a firm stud. Add the balun straps to each side of the balun and studs. Be sure to use Penetrox on all connections and add the 1/4 locking nut. Set the shorting bar to the position noted on the Antenna dimension sheet.

4. Sighting the elements

Once all the elements are installed, sighting and aligning of the elements can be performed. Although, all the elements were sighted and aligned at the factory some small adjustments may be needed.

Sighting the element: Stand about 20 ft. behind the antenna, position yourself centered on the antenna and change your height as to reference one element to another. This will make it clear what element is out of alignment. Adjust as needed, continue this method working from the rear to the front. Below is a simulation of viewing or sighting the elements. In this simulation the elements are straight , in actual practice the elements will have some droop.



FG30-4 ASSEMBLY NOTES

5. Guy cables preassembly.

The center guy position has been marked at the factory with a sticker. The vertical risers attach just in front and just behind the sticker (exact placement is not important). The risers should be mounted perpendicular from each other (see Vertical riser detail). Use the appropriate hardware and tighten. HPTG-1200 has been supplied in 2 different lengths, the short lengths are used in the rear and the long lengths will be used in the front of the antenna. Attach the ends of the Philistran to the front guy points using a thimble and 2 wire clips, bend the thimble to get it thru the guy attachment points then bend back into shape. Loosen the wire clip as to let the line slide thru, then slide onto the Philistran and loop the Philistran thru the hole in the guy points and back onto its self with about 3" tail, slip the short end of line thru the wire clip and pull the wire clip close to the thimble and tighten to make sure the line stays in the thimble to protect the Philistran from being damaged, now tighten the outer wire clip. Use this same technique on the other guy points.

Quad guywire philosophy

The main idea of the quad guy arrangement is to keep the boom of the antenna from bouncing. The most important guy wire is the main over head guy. The adjustment of the overhead guy should be adjusted to keep the boom straight and free from sagging when in its final position. The other guy wires only need to be taunt not tight. They are only there to keep the boom straight during bouncing or heavy winds.

6. Boom to mast plate mounting

The boom has been marked with a sticker showing the position of the rear cradle clamp position. Depending on the installation technique the BTM plate could be mounted to the tower mast first, or the antenna first. This is your installation choice.

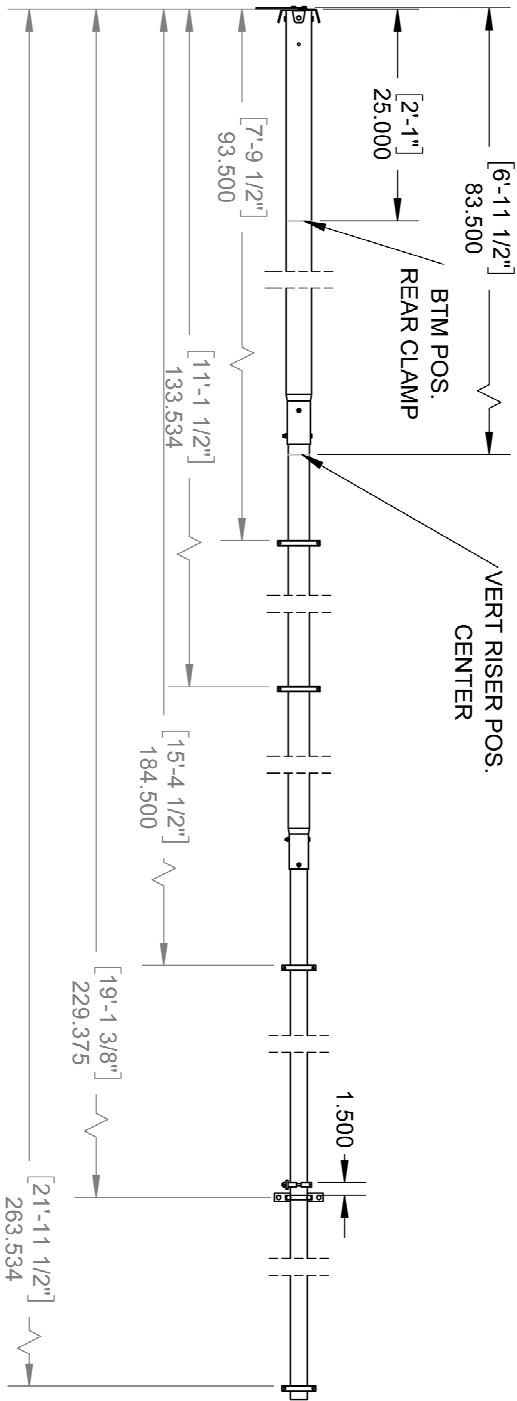
8. Inspection.

Check all dimensions one last time. Check all hardware for tightness and confirm all aluminum to aluminum connections have Penetrox paste.

FG30-4 BOM AS SHIPPED IN ASSEMBLIES

DESCRIPTION.....	QTY
BOOM ASSEMBLY W/ ELEMENT CLAMPS & GUY MOUNTS	1
ELEMENT WRAP BAG	
REFLECTOR HALF ASSEMBLY,.....	2
DRIVEN ELEMENT HALF ASSEMBLY,.....	2
D1 ELEMENT HALF ASSEMBLY,	2
D2 ELEMENT HALF ASSEMBLY,.....	2
BULK PACKED	
BALUN 1:1 5 KW, (SABL0450).....	1
DRIVEN ELEMENT COMPONENTS	
ELEMENT SLEEVE, (2.0 RC) .875 X .058 X 30" (M2AEP0015)	2
ELEMENT SLEEVE, (2.5 RC) .875 X .058 X 30" (M2AEP0016)	1
INSULATOR, .875 X 12.75 (M2AFG0031)	1
DISC INSULATORS, .875 (M2ADI0040)	2
HAIR PIN TUBE, 3/8 X .049 X 21" (M2ADP0580).....	2
3/8 CLAMP BLOCK,(M2AMC0261).....	4
HOSE CLAMP W HOLE #40	1
HAIR PIN STAND OFF 3/8 X 1" (M2ARS0010)	1
HOSE CLAMP #40	1
HF SHORTING BAR, (M2ASB0262)	1
BALUN MOUNT PLATE, (M2APT00590)	1
BALUN STRAP, (M2ABP0011)	2
(BOOM GUY SUPPORT MOUNTING)	
CRADLE, 2.5 (M2AMC0132).....	4
VERT RISER, WELDED (SAVR0060).....	2
PHILLYSTRAN, HPTG-1200 X 14'	4
PHILLYSTRAN, HPTG-1200 X 9'	4
WIRE CLIP, .125 GALV	32
THIMBLE, 3/16 ZINC	16
HARDWARE BAG#1	
BOLT, 5/16-18 X 5.25 SS	4
LOCK NUT, 5/16-18 SS	4
BOLT, 1/4-20 X 2.25" SS	2
BOLT, 1/4-20 X 2.0" SS	1
BOLT, 1/4-20 X 1.750" SS	8
BOLT, 1/4-20 X 0.50 SS	3
BOLT, 1/4-20 X 0.375 SS	2
LOCK NUT, 1/4-20 SS	11
NUT, 1/4-20 SS.....	2
SET SCREW, 1/4-20 X .250 SS	2
LOCK WASHER, 1/4 SS.....	7
ALLEN WRENCH, 1/8	1

FG30-4 BOOM / CLAMP ASSEMBLY



ITEM NO.	PART NUMBER	DESCRIPTION	QTY.
1	M2ABSS30-4MIT-4	BOOM SECTION #1	1
2	M2ABSS30-4MIT-2	BOOM SECTION #3	1
3	M2ABSS30-4MIT-1	BOOM SECTION #2	1
4	M2AEC0220	RING CLAMP	2
5	M2AEC0200	RING CLAMP	2
6	M2APT0061.B	REAR GUY MOUNT PLATE	1
7	M2APT0066.B	REAR GUY MOUNT LOCATOR BLOCK	1
8	M2APT0068	REAR BOOM SUPPORT PLATE	1
9	M2AMC0130.A	CRADLE, 2.0" DIAMETER TUBE, STANDARD	4
10	M2APT0060	GUY SUPPORT PLATE	2
11	HNT02500100	LOCKNUT, 1/4-20, SS	8
12	HB102500150	HEX BOLT 1/4-20" X 3/4" SS	4
13	HB102500600	BOLT, 1/4-20 X 2.75", HEX HEAD, SS	2
14	HB102500700	BLT, 1/4-20X3.25, HEX HD, SS	2
15	HB102500300	BOLT, 1/4-20 X 1-1/4" HEX HD, SS	4
16	HB103120445	BLT, 5/16-18X3.25, HEX HD, SS	4
17	HNT03120100	LOCKNUT, 5/16-18, SS	4



M2
ANTENNA SYSTEMS, INC.

4402 NORTH SELLAND AVE
FRESNO, CA 93722
PHONE: (559) 432-8873

30-4

PART No:

DESCRIPTION:
BOOM WITH CLAMPS AND HARDWARE

MATERIAL:

FINISH:

PROPRIETARY AND CONFIDENTIAL

THE INFORMATION CONTAINED IN THIS DRAWING IS THE SOLE PROPERTY OF M2 ANTENNA SYS. INC. ANY REPRODUCTION IN PART OR AS A WHOLE WITHOUT THE WRITTEN PERMISSION OF M2 ANTENNA SYS. INC. IS PROHIBITED.

DO NOT SCALE DRAWING WEIGHT: 27.67

REV

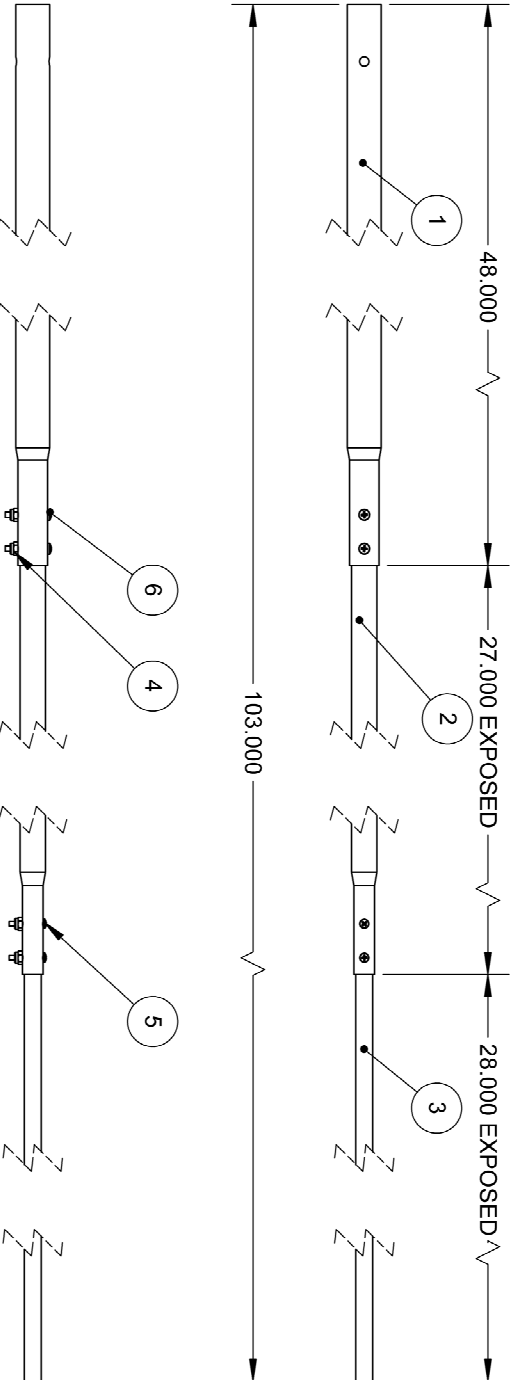
A

TOLERANCES:
FRACTIONAL ± .030"
ANGULAR ± .5°
TWO PLACE DECIMAL ± .015"
THREE PLACE DECIMAL ± .005"

DIMENSIONS ARE IN INCHES
UNLESS SPECIFIED OTHERWISE

FG30-4MIT REFLECTOR ASSEMBLY (HALF)

ITEM NO.	PART NUMBER	DESCRIPTION	HARDWARE/QTY.
1	M2AEP30-4MIT-1	M2AEP30-4MIT-1	1
2	M2AEP30-4MIT-2	M2AEP30-4MIT-2	1
3	SAEL30-4MIT	REFLECTOR ELEMENT	1
4	HNT00830150	LOCK NUT, 8-32, SS	4
5	HSC00830600	SCRW, 8-32X1.0, PHL PAN HD, SS	2
6	HSC00830700	SCREW, 8-32 X 1.250", PHILLIPS PAN HEAD, SS	2



.5625 GAP COMPENSATED FROM ELEMENT TIP

REVISIONS			
REV.	ECO #	DESCRIPTION	DATE



DIMENSIONS ARE IN INCHES
UNLESS SPECIFIED OTHERWISE

ANTENNA SYSTEMS, INC.

TOLEANCES:
FRACTIONAL ± .030"
ANGULAR ± .5°
TWO PLACE DECIMAL ± .015"
THREE PLACE DECIMAL ± .005"

4402 NORTH SELLAND AVE FRESNO, CA 93722
PHONE: (559) 432-8873

PART NO: **30-4 REFLECTOR**

DESCRIPTION: **30-4 REFLECTOR ELEMENT HALF**

MATERIAL:

FINISH:

PROPRIETARY AND CONFIDENTIAL
THE INFORMATION CONTAINED IN THIS DRAWING IS THE SOLE PROPERTY OF M2 ANTENNA SYS, INC. ANY REPRODUCTION IN PART OR AS A WHOLE WITHOUT THE WRITTEN PERMISSION OF M2 ANTENNA SYS, INC. IS PROHIBITED

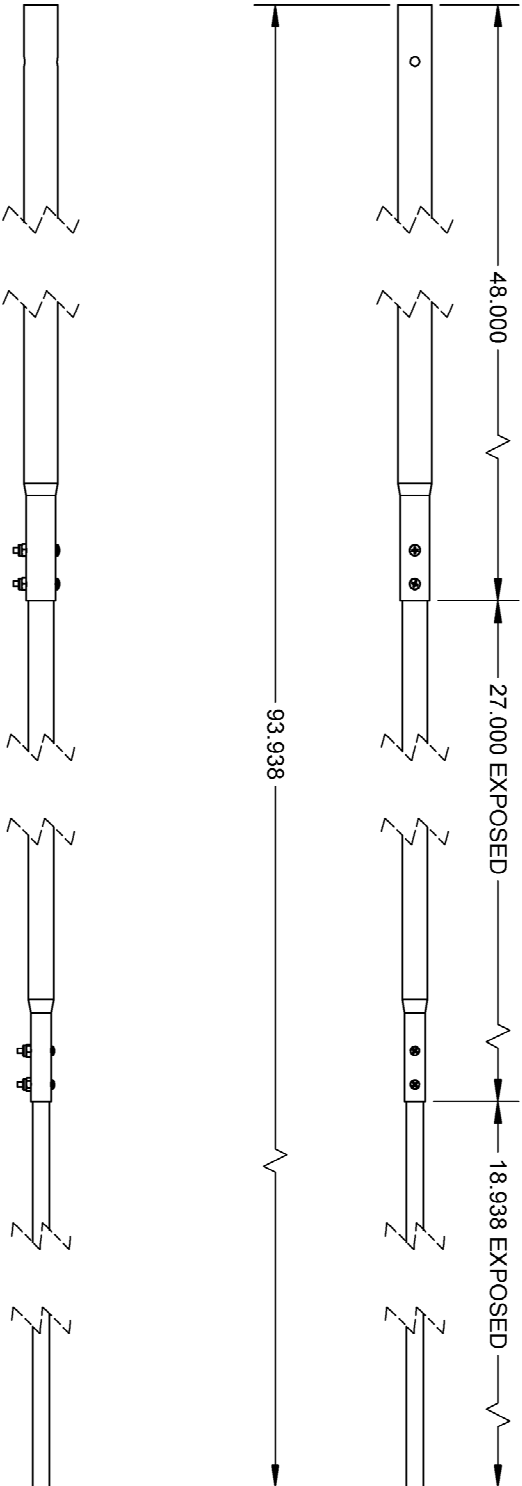
DO NOT SCALE DRAWING. WEIGHT: 1.36

SHEET 2 OF 2

REV	
A	

FG30-4MIT DRIVEN ELEMENT (HALF)

ITEM NO.	PART NUMBER	DESCRIPTION	HARDWARE/QTY.
1	M2AEP30-4MIT-1	M2AEP30-4MIT-1	1
2	M2AEP30-4MIT-2	M2AEP30-4MIT-2	1
3	SAEL30-4MIT	DRIVEN ELEMENT	1
4	HNT00830150	LOCK NUT, 8-32, SS	4
5	HSC00830600	SCRW, 8-32X1.0, PHL PAN HD, SS	2
6	HSC00830700	SCREW, 8-32 X 1.250", PHILLIPS PAN HEAD, SS	2



REVISIONS					
REV.	ECCO #	DESCRIPTION	DRAWN BY	APPRVD BY	DATE



DIMENSIONS ARE IN INCHES
UNLESS SPECIFIED OTHERWISE

TOLERANCES:
FRACTION ± .030"
ANGULAR ± .5°
TWO PLACE DECIMAL ± .015"
THREE PLACE DECIMAL ± .005"

4402 NORTH SELLAND AVE
FRESNO, CA 93722
PHONE: (559) 452-8873

30-4 DRIVEN ELEMENT

REV

DESCRIPTION: **30-4**
DRIVEN ELEMENT HALF

MATERIAL:

FINISH:

PROPRIETARY AND CONFIDENTIAL

THE INFORMATION CONTAINED IN THIS DRAWING IS THE SOLE PROPERTY OF M2 ANTENNA SYS. INC. ANY REPRODUCTION IN PART OR AS A WHOLE WITHOUT THE WRITTEN PERMISSION OF M2 ANTENNA SYS. INC. IS PROHIBITED

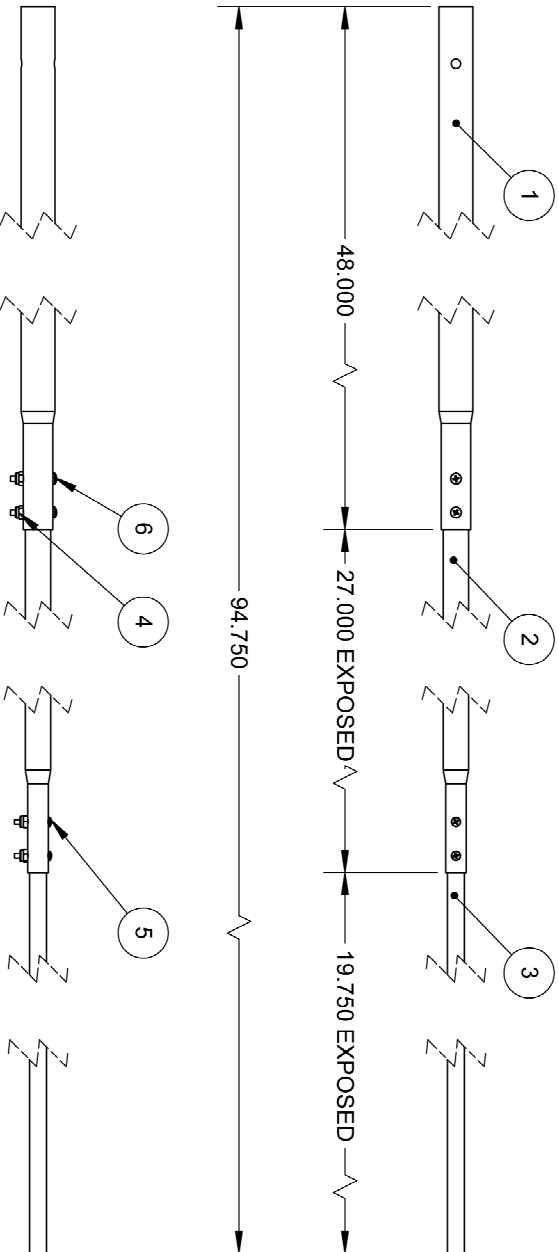
DO NOT SCALE DRAWING. WEIGHT: 1.30

SHEET 2 OF 2

A

FG30-4MIT DIRECTOR-1 ELEMENT (HALF)

ITEM NO.	PART NUMBER	DESCRIPTION	HARDWARE/QTY.
1	M2AEP30-4MIT-1	M2AEP30-4MIT-1	1
2	M2AEP30-4MIT-2	M2AEP30-4MIT-2	1
3	SAEL30-4MIT	DIRECTOR # 1 ELEMENT	1
4	HNT00830150	LOCK NUT, 8-32, SS	4
5	HSC00830600	SCRW, 8-32X1.0, PHL PAN HD, SS	2
6	HSC00830700	SCREW, 8-32 X 1.250", PHILLIPS PAN HEAD, SS	2



REVISIONS					REV
REV.	ECO #	DESCRIPTION	DRAWN BY	APRVD BY	DATE



4402, NORTH SELLAND AVE
 FRESNO, CA 93722
 PHONE: (559) 432-8873

PART No: **30-4 DIRECTOR-1**

DESCRIPTION: **30-4 DIRECTOR 1 ELEMENT HALF**

MATERIAL:

FINISH:

PROPRIETARY AND CONFIDENTIAL

THE INFORMATION CONTAINED IN THIS DRAWING IS THE SOLE PROPERTY OF M2 ANTENNA SYS, INC. ANY REPRODUCTION IN PART OR AS A WHOLE WITHOUT THE WRITTEN PERMISSION OF M2 ANTENNA SYS, INC. IS PROHIBITED.

DO NOT SCALE DRAWING WEIGHT: 1.31

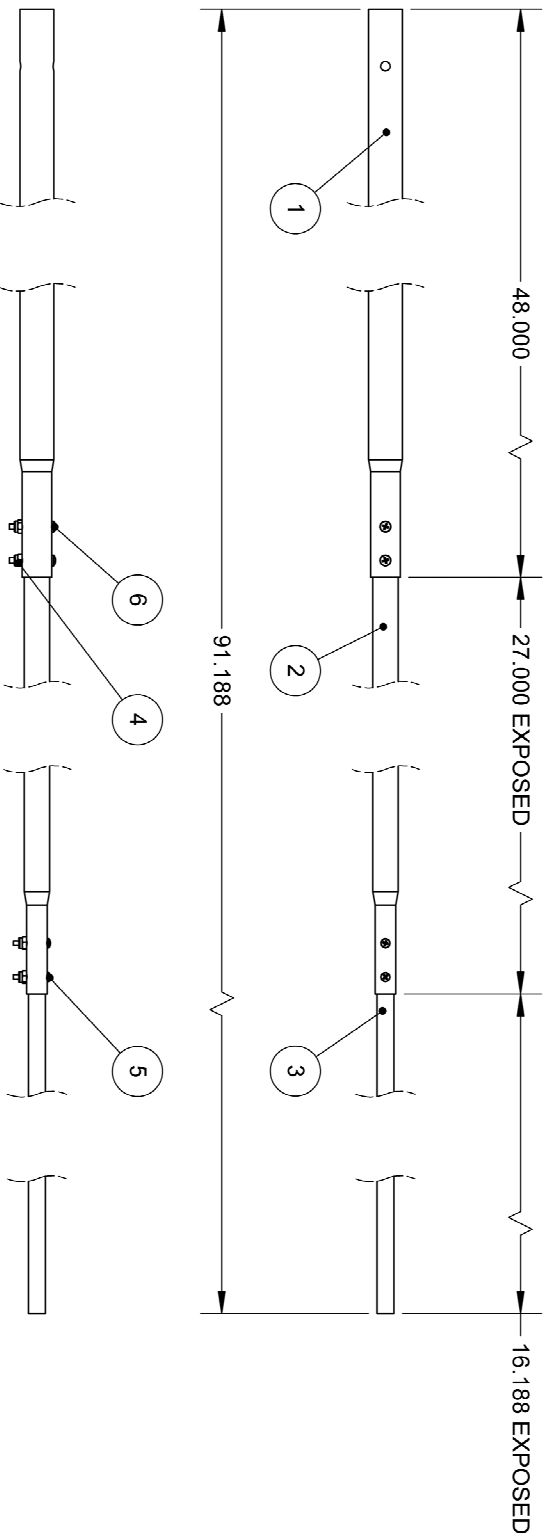
SHEET 2 OF 2

DIMENSIONS ARE IN INCHES UNLESS SPECIFIED OTHERWISE

TOLERANCES:
 FRACTIONAL: ± .030"
 ANGULAR: ± .5°
 TWO PLACE DECIMAL: ± .015"
 THREE PLACE DECIMAL: ± .005"

FG30-4MIT DIRECTOR-2 ELEMENT (HALF)

ITEM NO.	PART NUMBER	DESCRIPTION	HARDWARE/ QTY.
1	M2AEP30-4MIT-1	M2AEP30-4MIT-1	1
2	M2AEP30-4MIT-2	M2AEP30-4MIT-2	1
3	SAEL30-4MIT	DIRECTOR #2 ELEMENT	1
4	HNT00830150	LOCK NUT, 8-32, SS	4
5	HSC00830600	SCRW, 8-32X1.0, PHL PAN HD, SS	2
6	HSC00830700	SCREW, 8-32 X 1.250", PHILLIPS PAN HEAD, SS	2



REVISIONS

REV.	ECO #	DESCRIPTION	DRAWN BY	APRVD BY	DATE



4402 NORTH SELLAND AVE
 FRESNO, CA 93722
 PHONE: (599) 432-8873

PART No: **30-4 -DIRECTOR-2**

DESCRIPTION: **30-4 DIRECTOR-2**

MATERIAL:

FINISH:

PROPRIETARY AND CONFIDENTIAL

THE INFORMATION CONTAINED IN THIS DRAWING IS THE SOLE PROPERTY OF M2 ANTENNA SYS. INC. ANY REPRODUCTION IN PART OR AS A WHOLE WITHOUT THE WRITTEN PERMISSION OF M2 ANTENNA SYS. INC. IS PROHIBITED

DO NOT SCALE DRAWING WEIGHT: 1.28

SHEET 2 OF 2

REV **A**

ELEMENT MOUNTING DETAIL

2.5 RING CLAMP AND
ELEMENT
NOTE: THE GAP ON
THE 2.5 RING CLAMP

BOLT, 1/4-20 X 1.750
& LOCKNUT

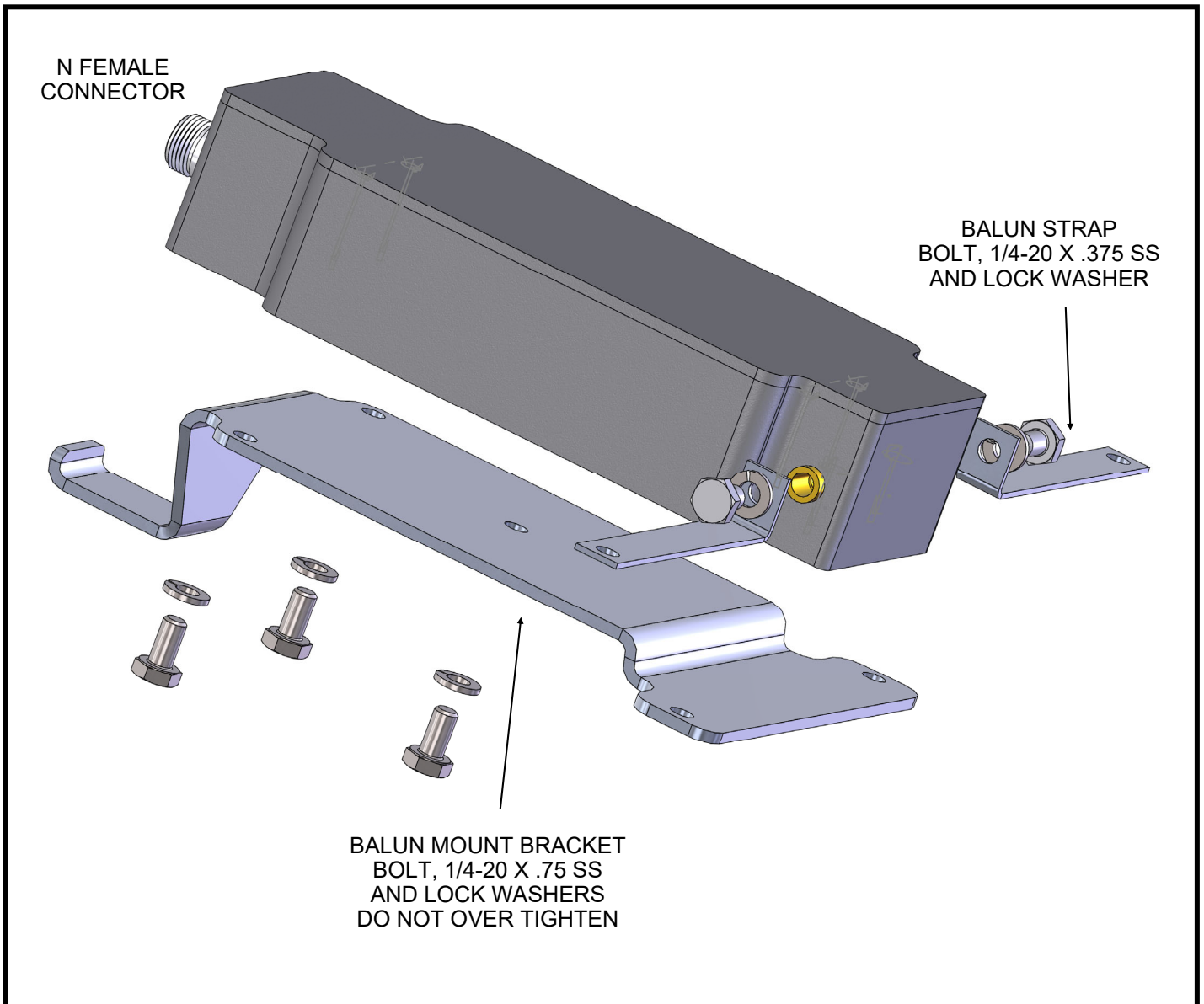
BOLT, 1/4-20 X 1.250
& LOCKNUT

2.0 RING CLAMP AND
ELEMENT
NOTE: **NO** GAP ON THE
2.0 RING CLAMP

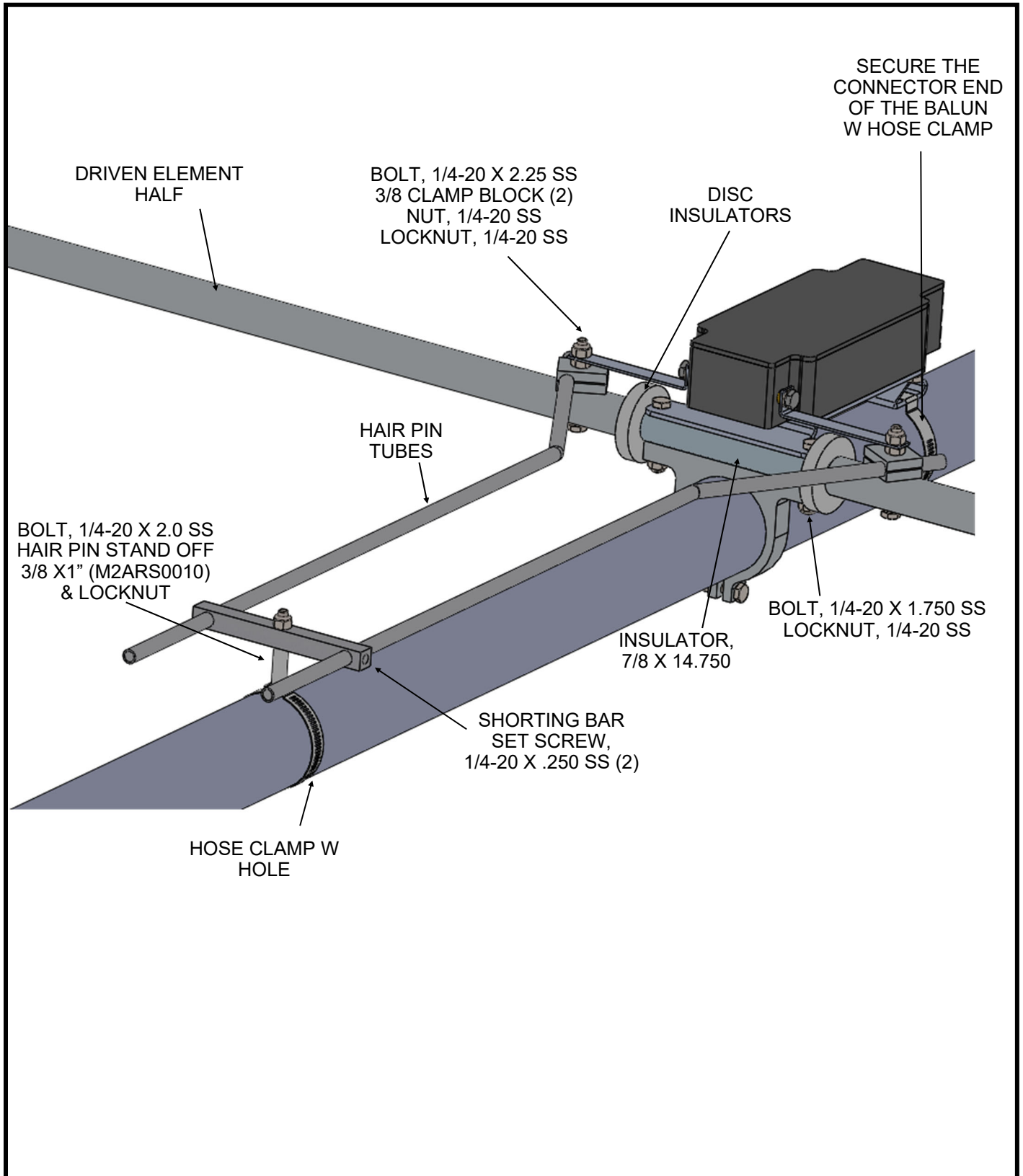
BOLT, 1/4-20 X 1.750
& LOCKNUT

BOLT, 1/4-20 X 1.250
& LOCKNUT

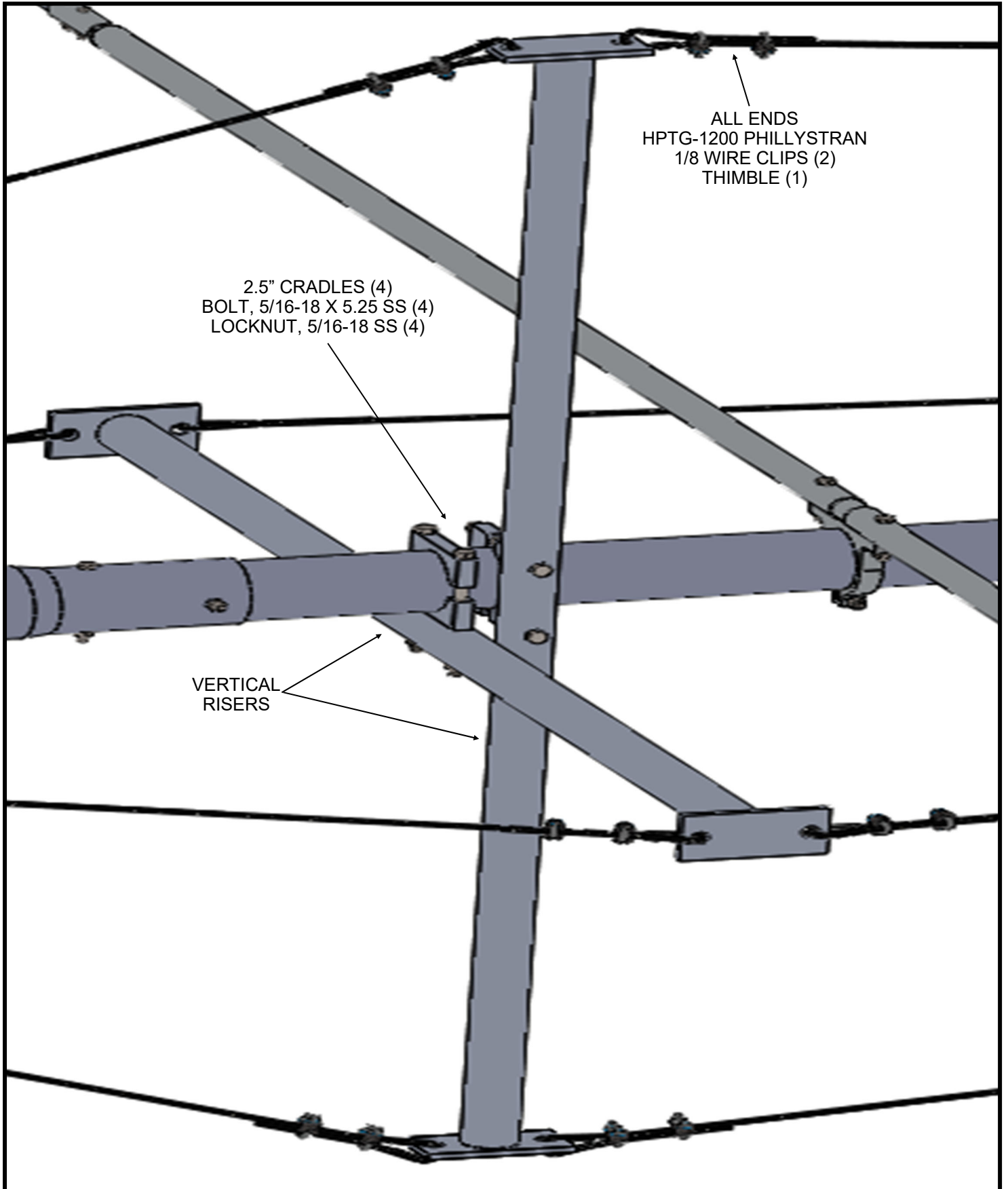
BALUN ASSEMBLY DETAIL



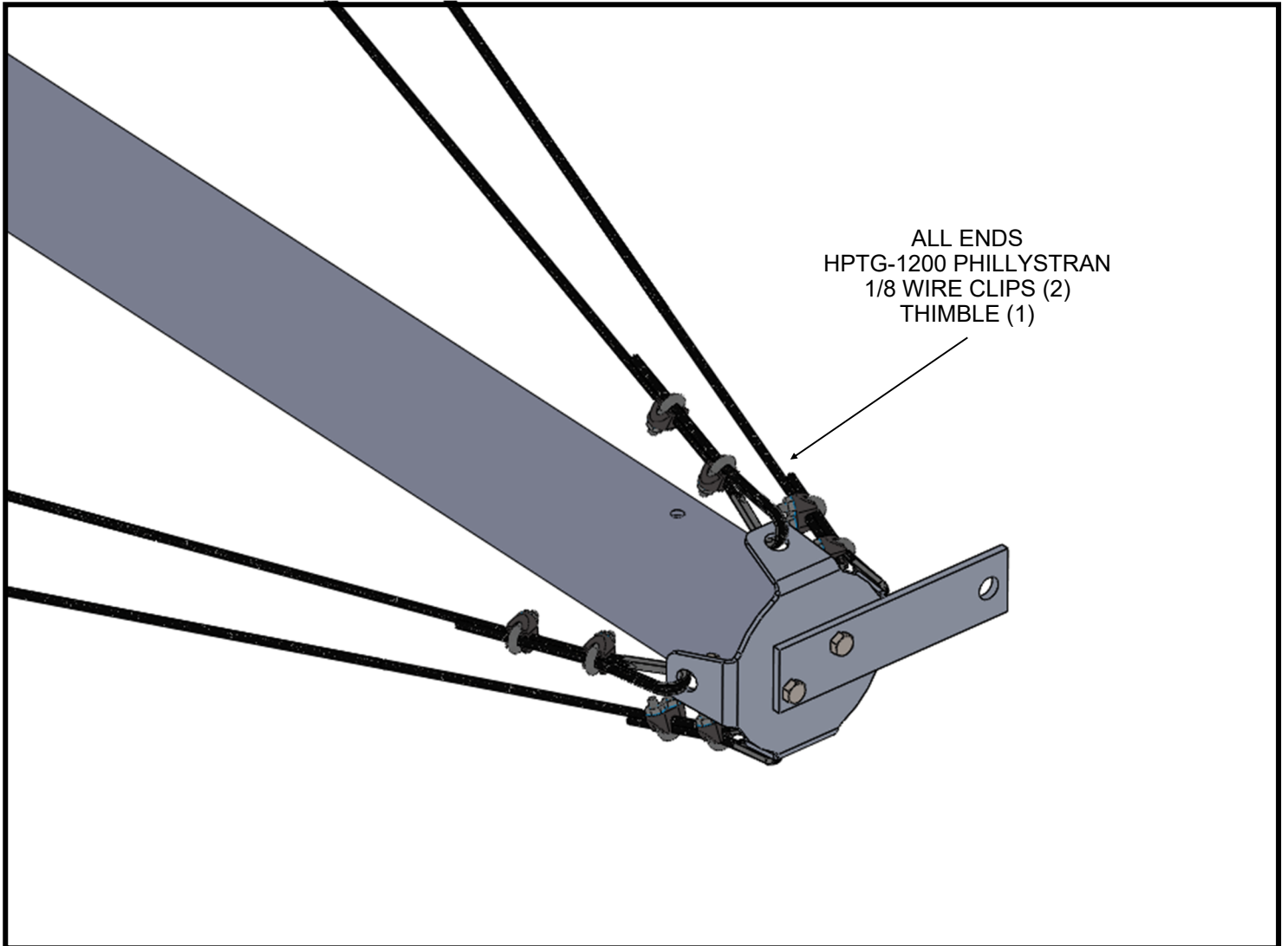
DRIVEN ELEMENT ASSEMBLY



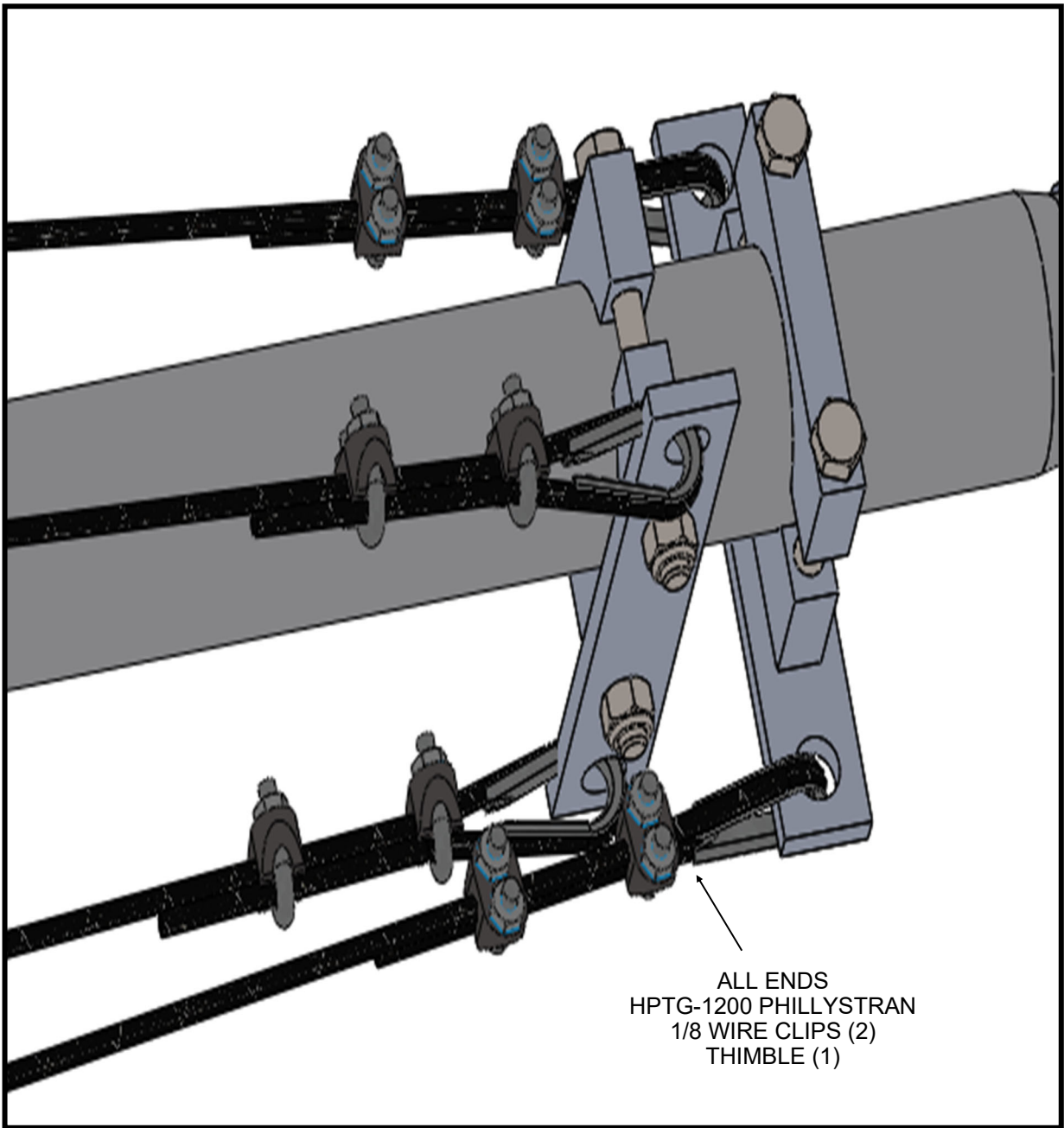
VERTICAL RISER DETAIL



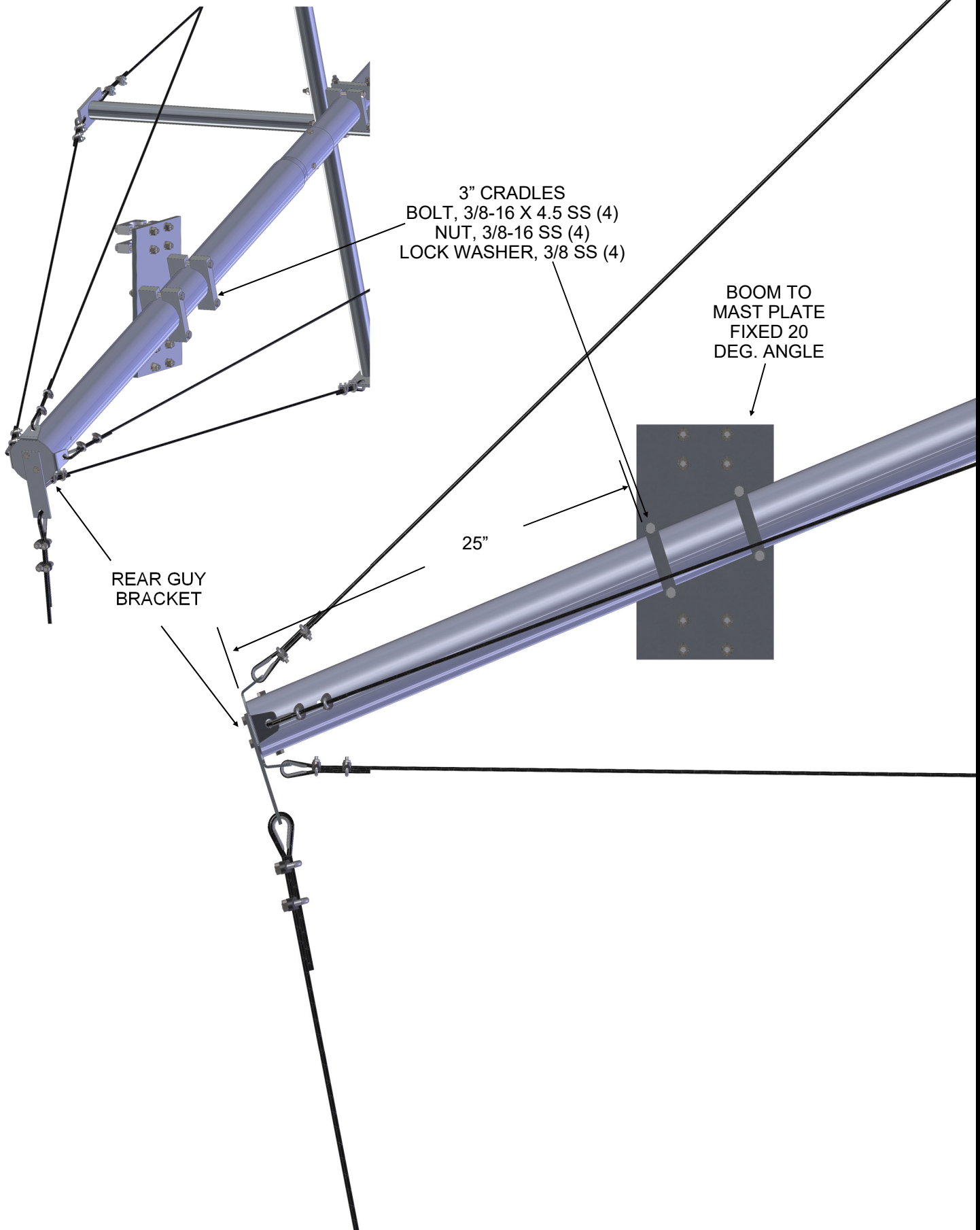
REAR WIRE GUY ASSEMBLY



FRONT WIRE GUY ASSEMBLY



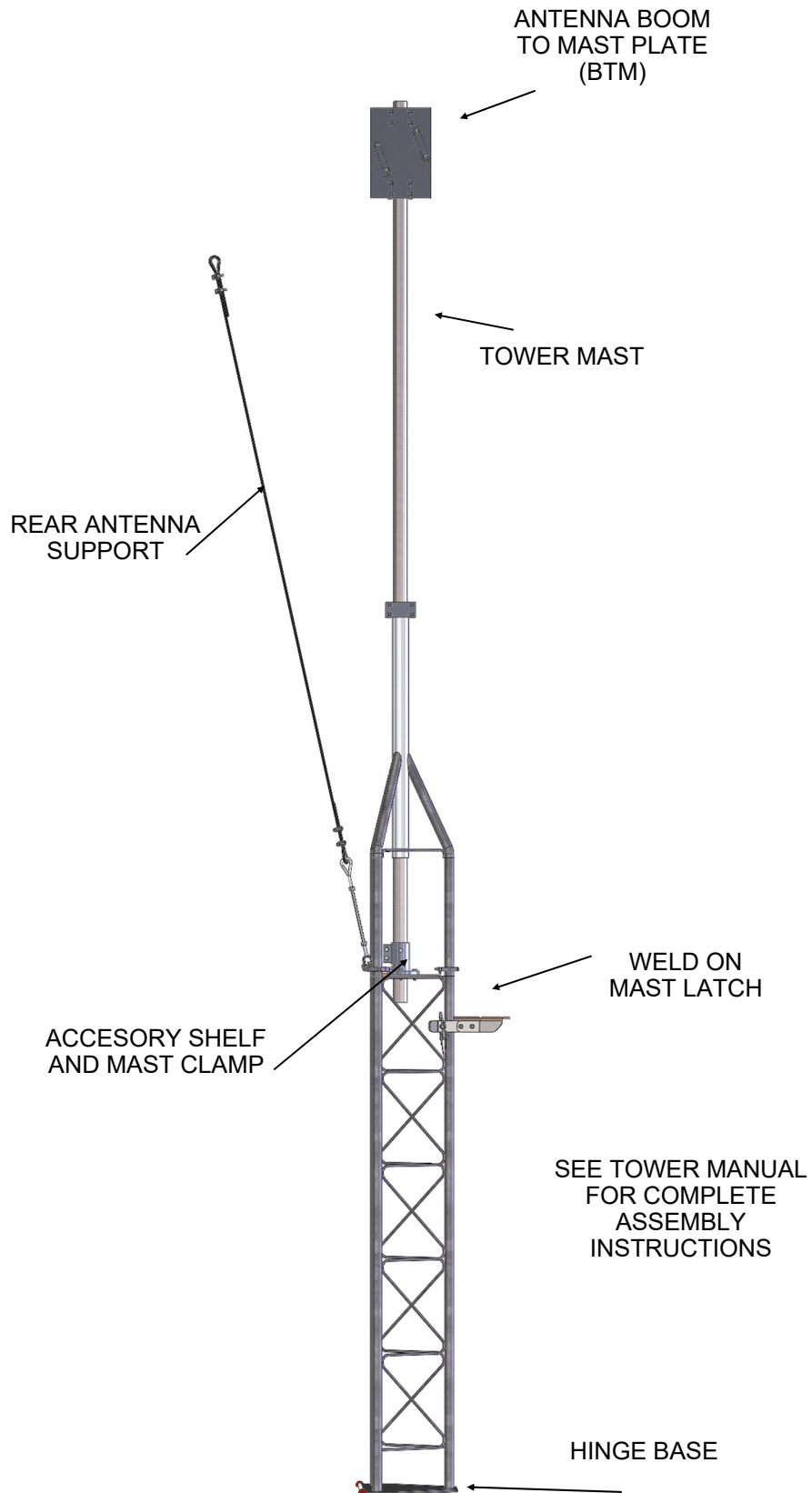
BTM PLATE MOUNTING DETAIL



FG30-4 TOWER BOM

DESCRIPTION	QTY
ROHN 25G TOWER 25AG2.....	1
ROHN HINGE BASE, BPH25G.....	1
MAST, 1.9 X 10' STEEL GALV	1
M2-ROHN ACCESSORY SHELF (M2ATW0125).....	1
MAST CLAMP ASSEMBLY, (SATW0100).....	1
TURN BUCKLE, 3/8 X 6 H&E, FORGED GALV	1
TOWER CRADLE, 1.25 (M2AMC0124).....	6
MAST LATCH, (M2ATW0135)	1
MAST LATCH WELD SIDE, (M2ATW0130)	1
HITCH PIN, 5/8 X 6	1
MAST CRADLE, 1.9 (M2AMC0152)	8
CRADLE, 3" (M2AMC0140)	4
BTM PLATE 20 DEG (M2APT0245)	1
MAST CLAMP 1.9 TO 2.260 (M2ATW0140).....	2
HPTG-4000 X 104".....	1
THIMBLE, 1/4 ZINC.....	2
WIRE CLIP, 1/4 GALV.....	4
 HARDWARE	
BOLT, 3/8-16 X 4.5 SS	4
BOLT, 3/8-16 X 3.5 SS.....	8
BOLT, 3/8-16 X 3.25 SS.....	4
BOLT, 3/8-16 X 3.0 SS.....	2
BOLT, 3/8-24 X 1.5 SS.....	2
LOCK WASHER, 3/8 SS	12
NUT, 3/8-16 SS	12
LOCK NUT, 3/8-16 SS	6
BOLT, 5/16-18 X 1.25 SS.....	6
LOCK NUT, 5/16-18 SS	6
BOLT, 1/4-20 X 3.0 SS.....	6
LOCK NUT, 1/4-20 SS	6

FG30-4MIT TOWER BOM



FG30-4MIT BOM COMPLETE

DESCRIPTION.....	QTY
BOOM SECTION #1, 3 X .125 X 82.00" (M2ABS30-4MIT-4)	1
BOOM SECTION #2, 2.5 X .125 X 96"(M2ABS30-4MIT-1)	1
BOOM SECTION #3, 2.0 X .125 X 96" (M2ABS300-4MIT-2)	1
ELE SEC,E1, 1.0 X .058 X 48" (M2AEP30-4MIT-1).....	8
ELE SEC,E2, 0.75 X .049 X 30" (M2AEP30-MIT-2).....	8
ELE TIP,REF, 0.5 X .049 X 31.0" (M2AEP30-4MIT-3).....	2
ELE TIP,DE, 0.5 X .049 X 21.937" (M2AEP30-4MIT-4)	2
ELE TIP,D1, 0.5 X .049 X 22.750" (M2AEP30-4MIT-5).....	2
ELE TIP,D2, 0.5 X .049 X 19.188" (M2AEP30-4MIT-6).....	2
ELE SLEEVE(2.0 RC), 0.875 X .058 X 30" (M2AEP0015).....	2
ELE SLEEVE (2.5 RC), 0.875 X .058 X 30" (M2AEP0016).....	1
RING CLAMP, 2.0" (M2AEC0200).....	2
RING CLAMP, 2.5 (M2AEC0220).....	2
CRADLE, 2" STD (M2AMC0130).....	4
GUY SUPPORT PLATE, M2APT0060	2
CRADLE, 2.5" STD (M2AMC0132).....	4
VERT RISER, WELDED (SAVR0060).....	2
REAR BOOM SUPPORT PLATE, (M2APT0068).....	1
REAR GUY MOUNT PLATE, (M2APT0061)	1
REAR GUY BLOCK, (M2APT0066).....	1
PHILLYSTRAN, HPTG-1200 X 14'	4
PHILLYSTRAN, HPTG-1200 X 9'	4
WIRE CLIP, .125 GALV.	32
THIMBLE, 3/16 ZINC	16
HAIR PIN TUBES, 3/8X .049 X 21" (M2ADP0580)	2
3/8 CLAMP BLOCK, (M2AMC0261).....	4
HOSE CLAMP W/ HOLE, #40	1
HF SHORTING BAR, (M2ASB0262)	1
INSULATOR, .875 X 12.75 (M2AFG0031)	1
DISC INSULATOR, .875 (M2ADI0040)	2
HAIR PIN STAND OFF, (M2ARS0010)	1
BALUN, 1:1 5 KW, (SABL0450).....	1
HOSE CLAMP #40	1
BALUN MOUNT PLATE, (M2APT0059).....	1
BALUN STRAP, (M2ABP0011)	2
HARDWARE	
BOLT, 5/16-18 X 5.25" SS	4
BOLT, 5/16-18 X 3.25" SS	8
LOCKNUT, 5/16-18 SS.....	12
BOLT, 1/4-20 X 3.25 SS	2
BOLT, 1/4-20 X 2.75 SS	2
BOLT, 1/4-20 X 2.25 SS	2
BOLT, 1/4-20 X 2.0 SS	1
BOLT, 1/4-20 X 1.75 SS	8
BOLT, 1/4-20 X 1.25 SS	8
BOLT, 1/4-20 X 0.75 SS	4
BOLT, 1/4-20 X 0.50 SS	3
BOLT, 1/4-20 X 0.375 SS	2
NUT, 1/4-20 SS.....	2
LOCK NUT, 1/4-20 SS.....	23
LOCK WASHER, 1/4-20 SS	5
SCREW, 8-32 X 1.25 SS	16
SCREW, 8-32 X 1.0 SS	16
LOCK NUT, 8-32 SS.....	32
SET SCREW, 1/4-20 X .25 SS	2
ALLEN WRENCH, 1/8	1

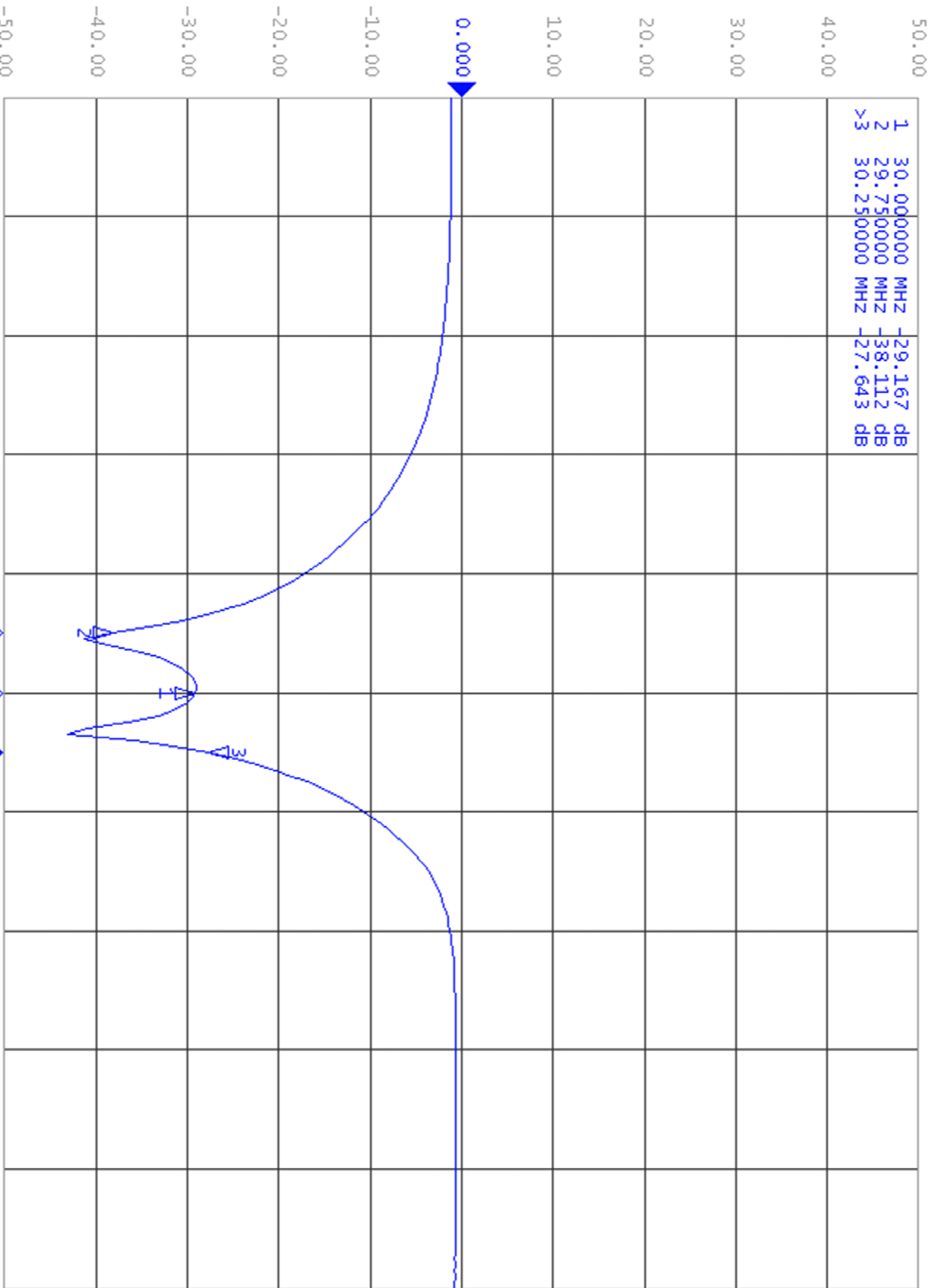
FG30-4MIT RETURN LOSS

5071C Network Analyzer

1 Active Ch/Trace 2 Response 3 Stimulus 4 Mkt/Analysis 5 Instr State

1 S11 Log Mag 10.00dB/ Ref 0.000dB [D/M]

30-4MIT 12/06/2019



Center 30 MHz

IFBW 70 kHz

Span 5 MHz Off

Format
Log Mag

Log Mag

Phase

Group Delay

Smith

Polar

Lin Mag

SWR

Real

Imaginary

Expand Phase

Positive Phase

Return

Meas Stop

ExtRef

Svc

2019-12-06 12:56

FG30-4MIT DIMENSION SHEET

ELEMENT
POSITION

EXPOSED TIP
LENGTH

REAR OF ANTENNA

