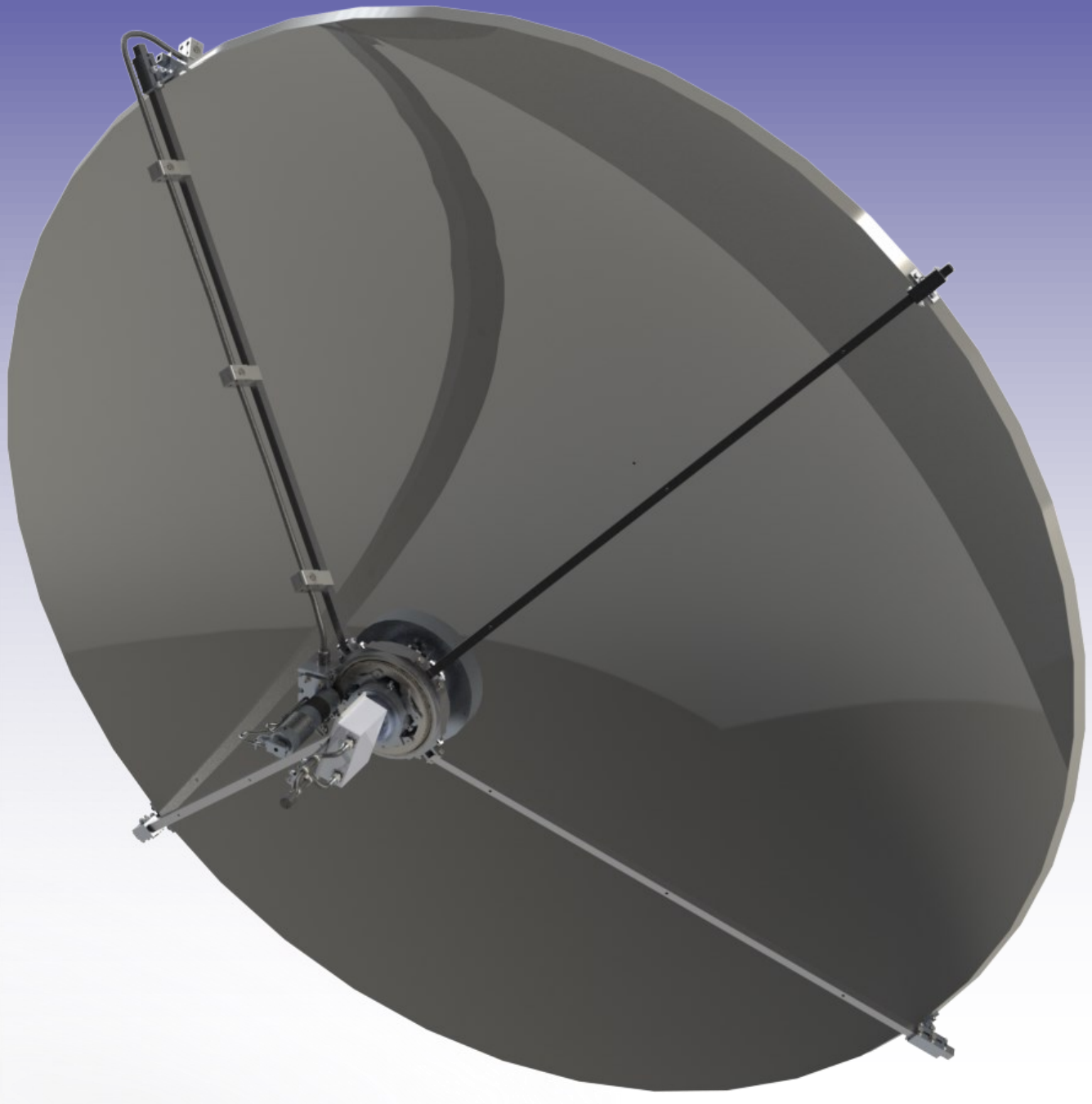




M2 ANTENNA SYSTEMS, INC.
MODEL NO: FGDFS2015
8' PRI SATELLITE DISH
S-BAND LINEAR FEED W/ POLARITY
CONTROL FGPR-6.5-24DC-PC-2



M2 ANTENNA SYSTEMS, INC. 4402 N. SELLAND AVE. FRESNO, CA 93722
TEL: (559) 432-8873 FAX: (559) 432-3059 WEB: WWW.M2INC.COM

©2022 M2 ANTENNA SYSTEMS INCOPORATED

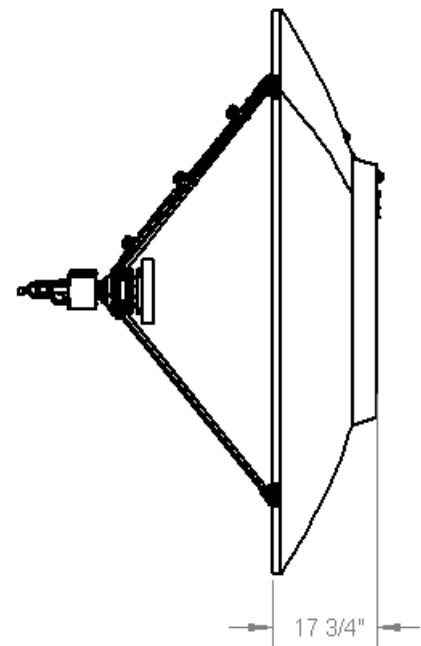
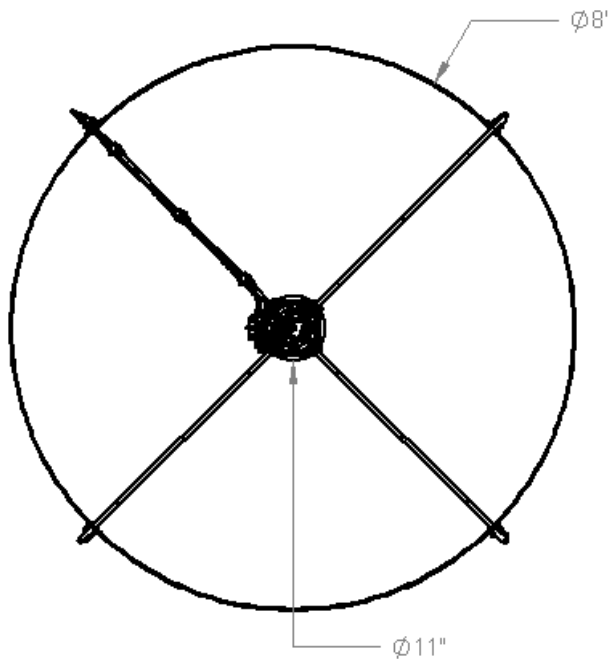
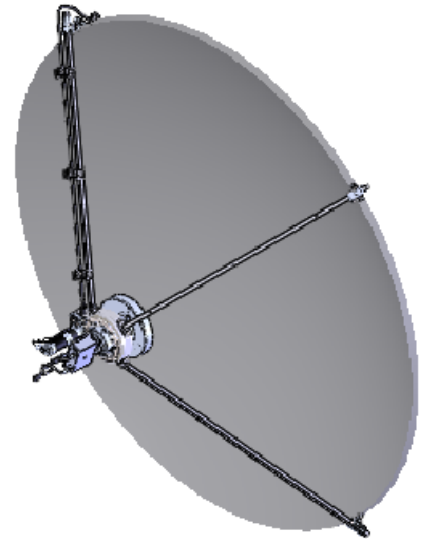
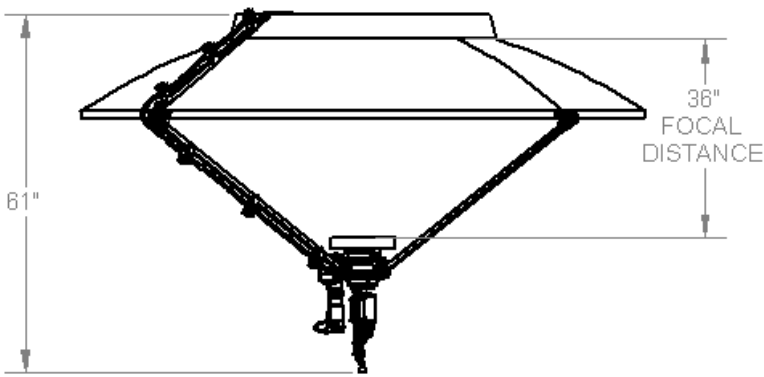
06/07/2022
REV A

OVERALL DIMENSIONS

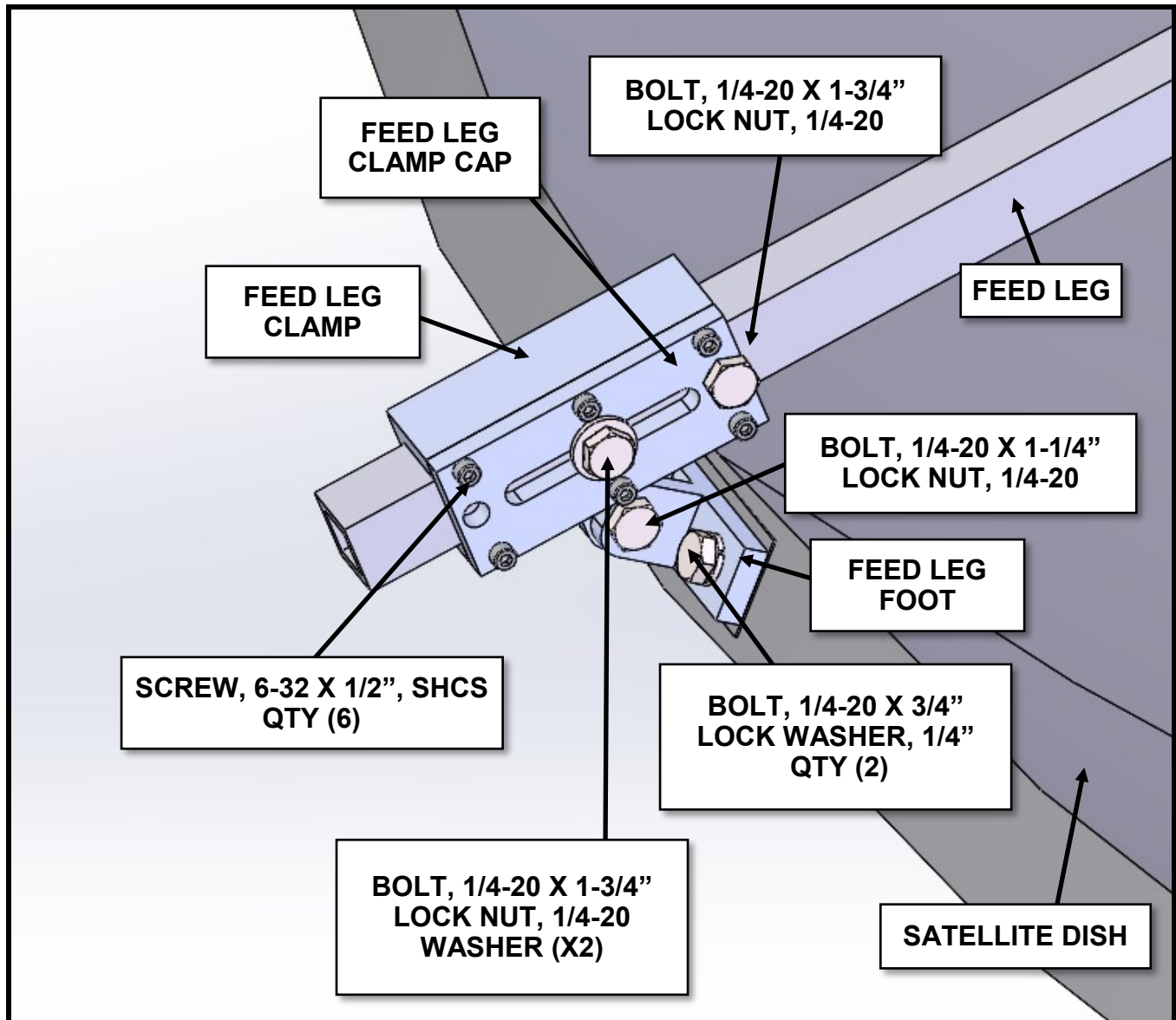
BEFORE YOU BEGIN: Look over all the DRAWINGS to get familiar with the various parts and assemblies in the system. Tools handy for assembly process: 11/32", 7/16", 1/2", 9/16" and 5/8" spin-tites, end wrenches and/or sockets.

NOTE:

All installations are unique in some way, which means it's OK to preassemble certain hardware, or rearrange the assembly process to meet specific site requirements. A quick review of the assembly notes and drawings should help firm up the appropriate strategy. Please remember to double-check all hardware for tightness BEFORE it becomes inaccessible.

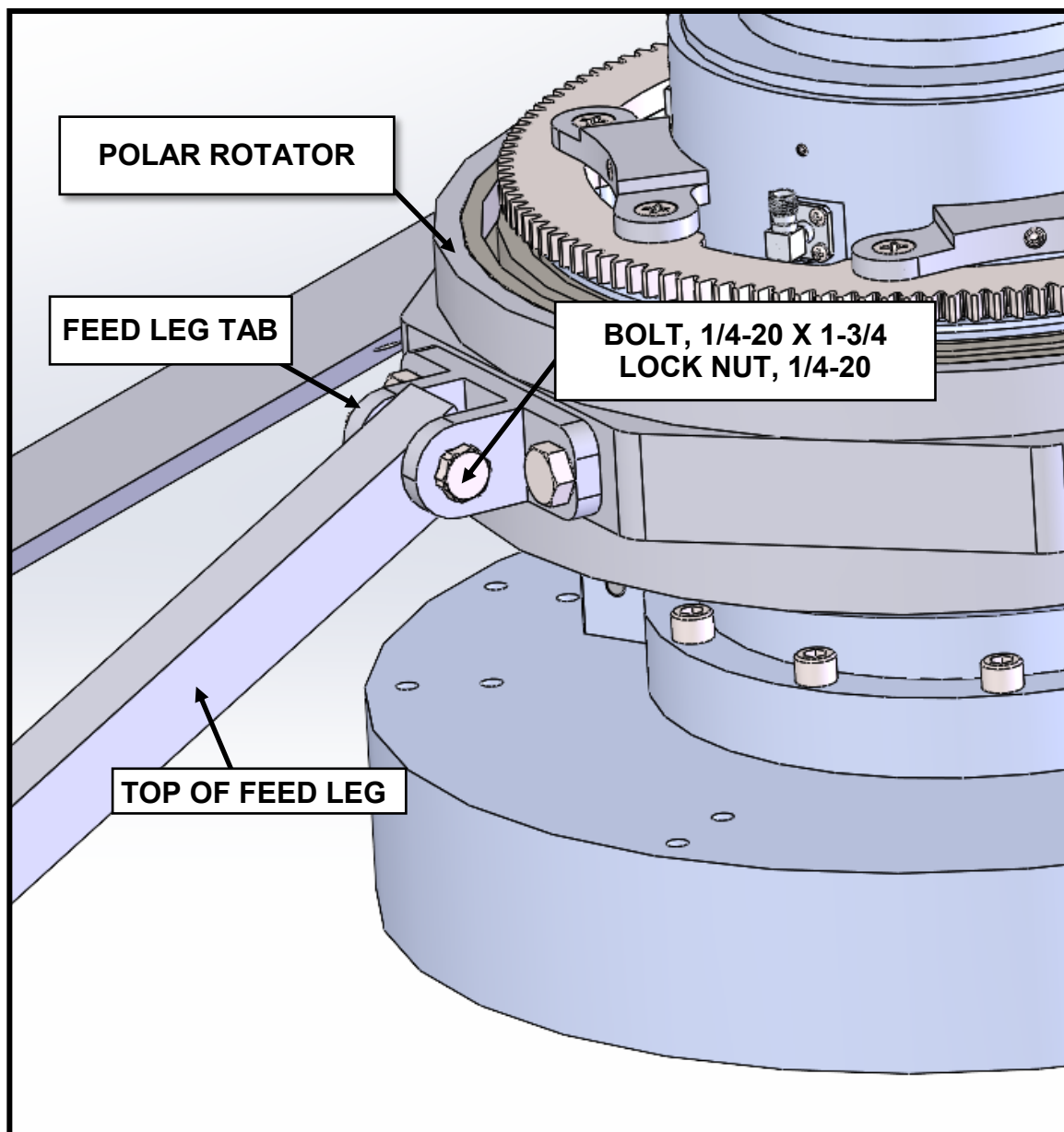


FEED INSTALLATION

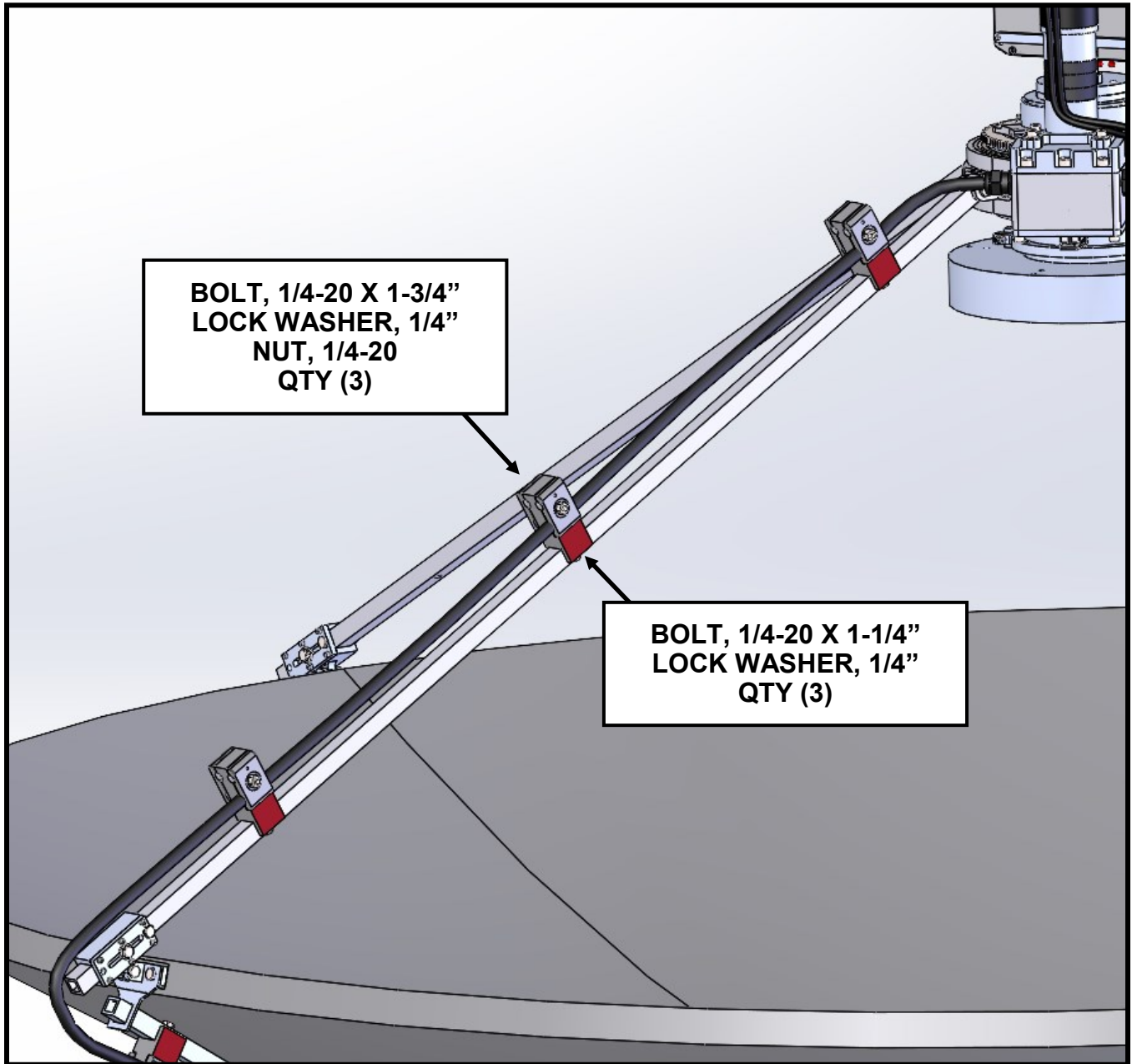


NOTE: Use top hole in clamp for recommended position. In the field minor adjustment may yield better results. Remove upper bolt. Use slotted hole to position feed. Once position is determined drilled second hole in upper/lower hole and pin feed leg to secure position.

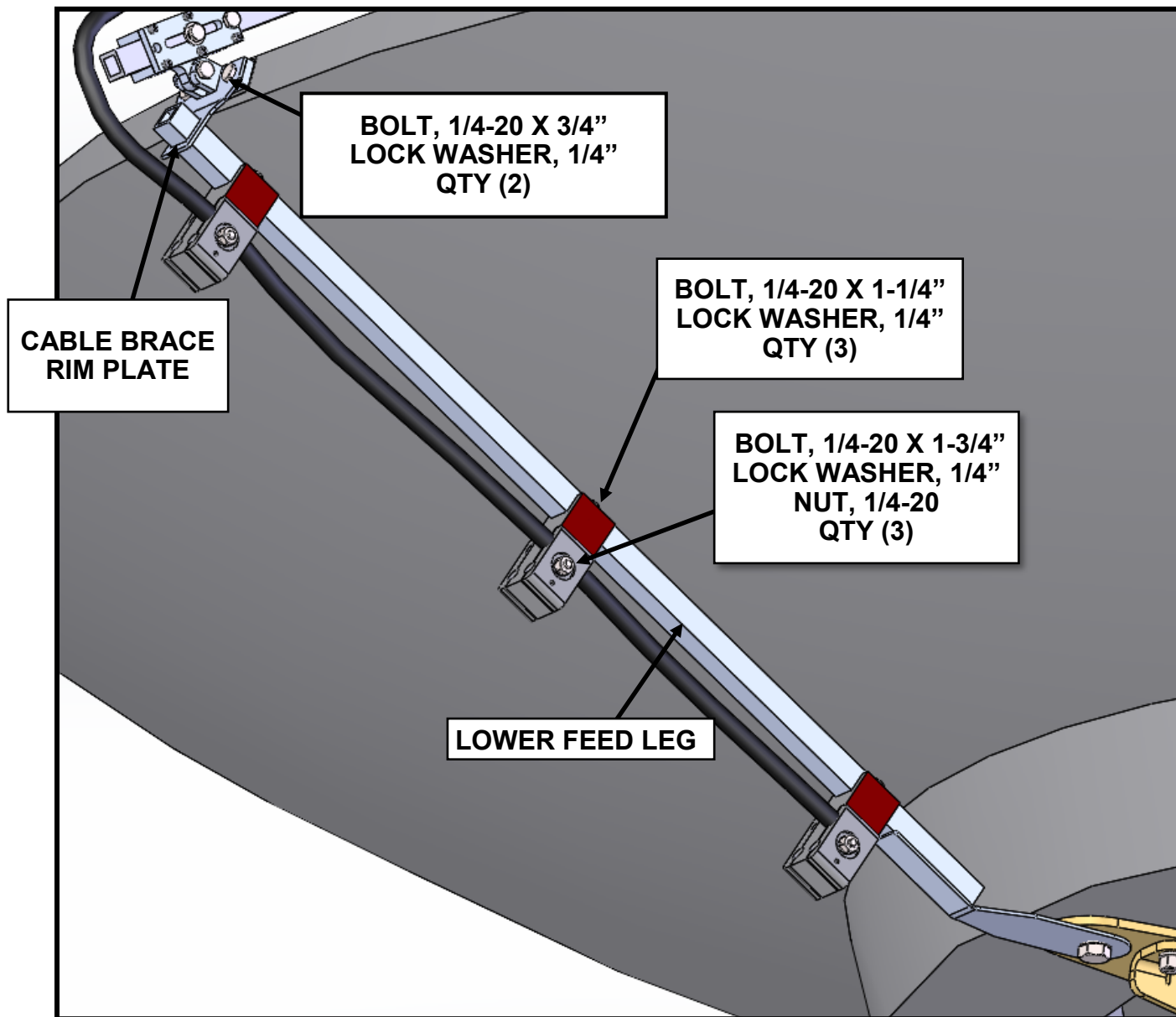
FEED INSTALLATION



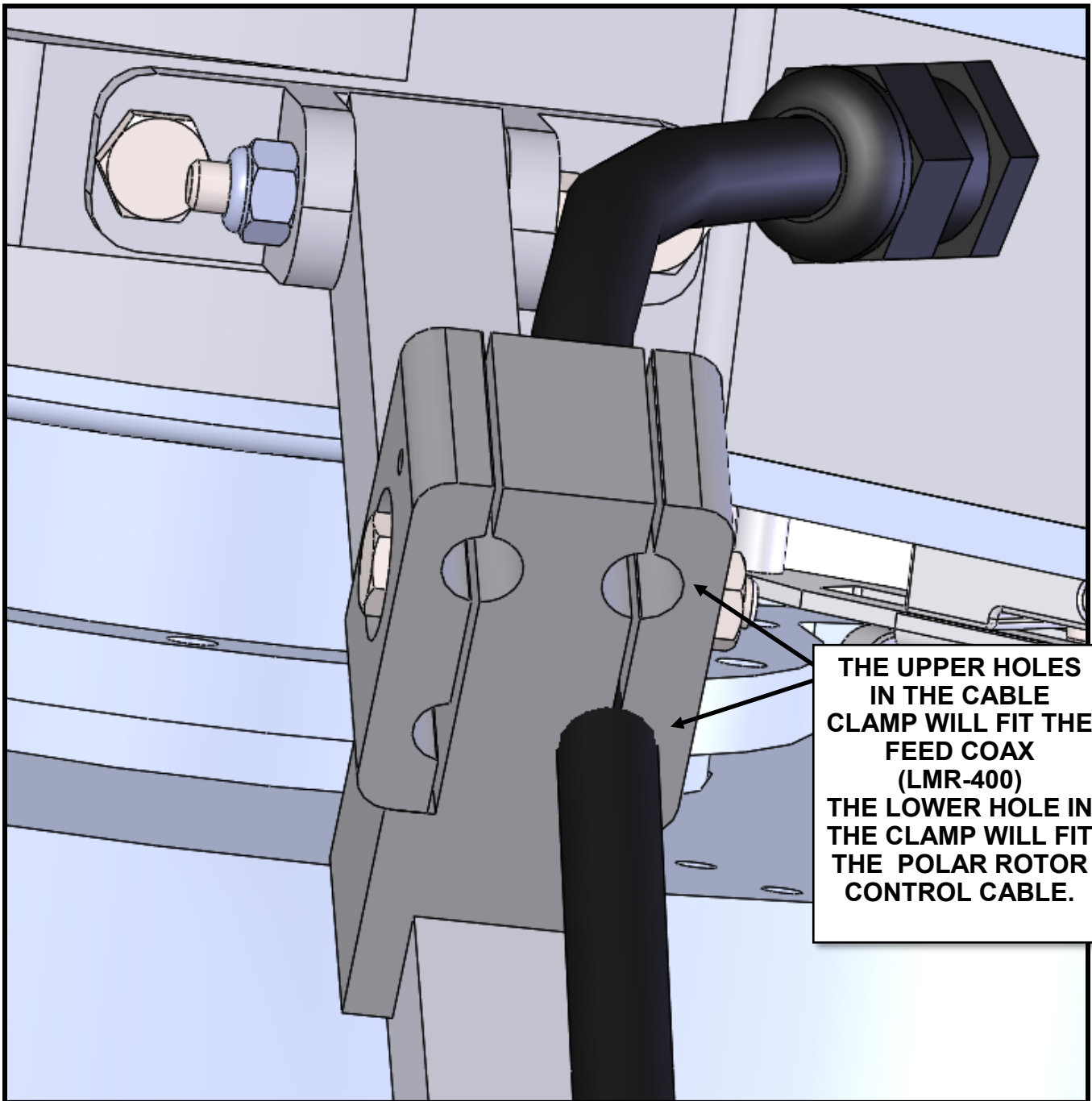
UPPER CABLE LEG



LOWER CABLE LEG



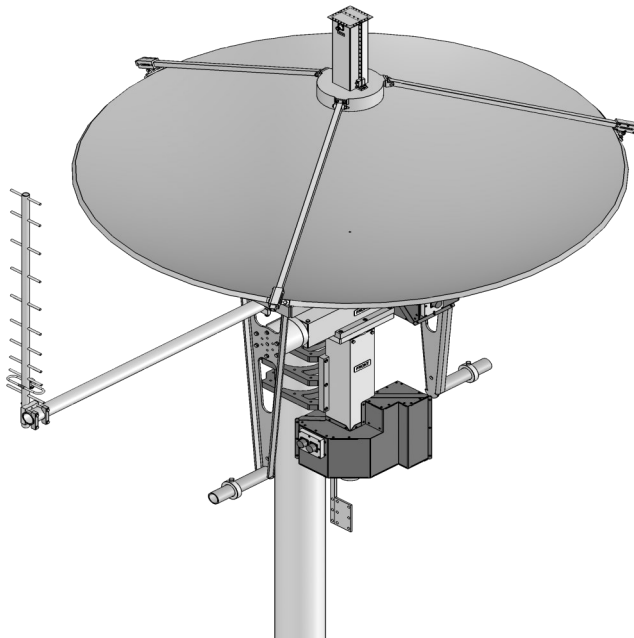
CABLE ROUTING



FGDFS2015 PARTS LIST

<u>DESCRIPTION</u>	<u>QTY</u>
S-BAND FEED (FGFD-1-SL-1-N) & POLAR ROTOR (FGPR-6.5-24DC-PC-1).....	1
PRI 8 FT REFLECTOR,(M2ASD-PRI-8-36FL-2).....	1
FEED LEG CLAMP, (M2AAE1631).....	4
FEED LEG CLAMP CAP, (M2AAE1632).....	4
FEED LEG, 8' DH DISH, (M2ASD0067).....	4
FEED LEG FOOT, (M2AAE1630).....	4
COAX SUPPORT MOUNT, (M2FD4060).....	6
CABLE CLAMP CAP, (M2AFD4061).....	12
LOWER CABLE BRACE, (SASD0100).....	1
 <u>HARDWARE</u>	
BOLT, 1/4-20 X 1-3/4", HEX HEAD, SS.....	19
BOLT, 1/4-20 X 1-1/4", HEX HEAD, SS.....	10
BOLT, 1/4-20 X 3/4" HEX HEAD, SS.....	12
LOCK NUT, 1/4-20, SS.....	21
NUT, 1/4-20, SS.....	6
FLAT WASHER, 1/4", SS.....	8
LOCK WASHER, 1/4", SS.....	20
SCREW, 6-32 X 3/8", SHCS, SS.....	24
ADEL CLAMP #6.....	4

12 MONTH LIMITED WARRANTY



THIS WARRANTY GIVES YOU SPECIFIC LEGAL RIGHTS. YOU MAY ALSO HAVE OTHER RIGHTS WHICH WILL VARY FROM STATE TO STATE OR PROVINCE TO PROVINCE.

M2 WARRANTS ITS PRODUCTS AGAINST DEFECTS IN MATERIAL AND WORKMANSHIP FOR A PERIOD OF 12 MONTHS FROM DATE OF PURCHASE. DURING THE WARRANTY PERIOD, M2 WILL, AT ITS OPTION, EITHER REPAIR OR REPLACE THE PRODUCTS OR COMPONENTS WHICH PROVE TO BE DEFECTIVE. THE WARRANTY SHALL NOT APPLY TO DEFECTS OR DAMAGE RESULTING FROM:

- **IMPROPER OR INADEQUATE MAINTENANCE BY USER**
- **IMPROPERLY PREPARED INSTALLATION SITE**
- **UNAUTHORIZED MODIFICATIONS OR MISUSE**
- **ACCIDENT, ABUSE, OR MISAPPLICATION**
- **NORMAL WEAR**

M2 SPECIFICALLY DOES NOT WARRANT THIS PRODUCT FOR ANY DIRECT, INDIRECT, CONSEQUENTIAL, OR INCIDENTAL DAMAGES ARISING FROM THE USE OR INABILITY TO USE THE PRODUCT. SOME STATES OR PROVINCES DO NOT ALLOW THE EXCLUSION OR LIMITATION OF LIABILITY FOR CONSEQUENTIAL OR INCIDENTAL DAMAGES SO THE ABOVE LIMITATION MAY NOT APPLY.

IN THE EVENT REPAIR OR REPLACEMENT ARE NECESSARY, PURCHASER SHALL CONTACT M2 FOR RETURN AUTHORIZATION. IN MANY CASES THIS CONTACT CAN SIMPLIFY AND EXPEDITE THE REPAIR / REPLACEMENT PROCESS AND HELP REDUCE COSTS AND DOWNTIME.

THE PURCHASER SHALL BE RESPONSIBLE FOR PACKING THE PRODUCT PROPERLY FOR RETURN AND FOR CHARGES TO SHIP THE PRODUCT TO M2. ALWAYS INCLUDE WITH THE SHIPMENT, A STATEMENT DETAILING THE PROBLEM / FAILURE AND ANY OTHER PERTINENT OBSERVATIONS. INSURING THE PRODUCT FOR SHIPMENT IS RECOMMENDED. USE THE ORIGINAL PACKING MATERIALS WHENEVER POSSIBLE. M2 IS RESPONSIBLE FOR CHARGES (IN THE UNITED STATES) TO RETURN THE REPAIRED / REPLACEMENT PRODUCT ONLY WHERE WARRANTY SERVICE IS INVOLVED.