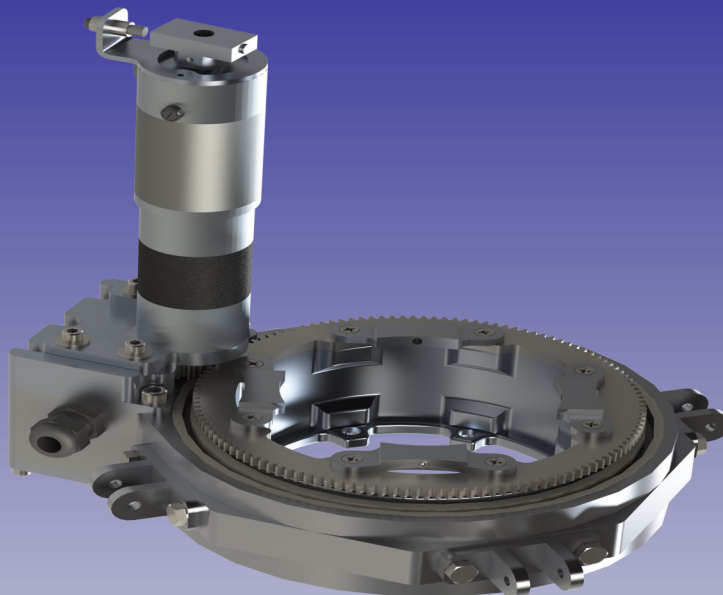




M2 Antenna Systems, Inc.

Model No: FGPR-6.5-24DC-PC-2



SPECIFICATIONS:

ModelFGPR-6.5-24DC-PC-2
Max Diameter Feed.....6.5"
Motor Type24VDC Gear Head
Gear Ratio2460:1
Drive GearSpur Gear

Mount Style..... Quad Leg
Body Material..... Aluminum
Main Bearings..... Nylon, SS balls
Rotation Range..... up to 360 Deg.
Position Resolution..... 0.2 deg.

Features:

M2 continues to improve and add to its line of dish feeds and dish feed polarity adjustment mechanisms. Our latest addition is the new PR-6.5-24DC-PC-2, this robust feed polarity mechanism is built for large L and S Band feed along with the complex multi Band feed where strength and reliability is necessary. This fully billet machined Pola-Rotor uses Nylon bearing with stainless Steel balls to combat weather condition. The entire electrical connections limit switch system is enclosed in sealed housing adding to the reliability where other would fail. When you need large dish feed polarity adjustment look no further than M2. Call us for your dish feed needs.

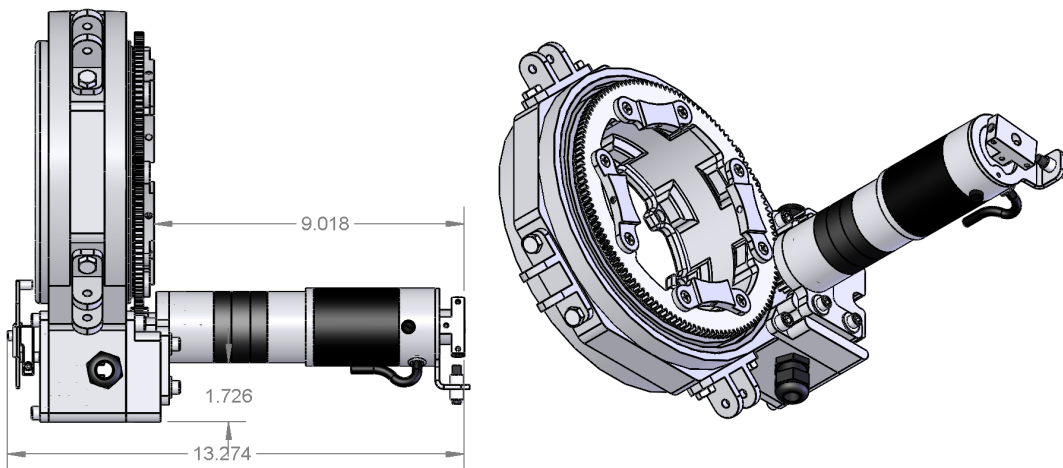
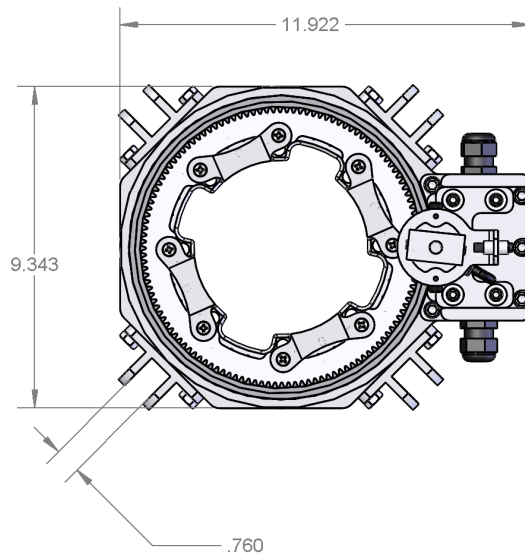
OVERALL DIMENSIONS

BEFORE YOU BEGIN: Look over all the DRAWINGS to get familiar with the various parts and assemblies in the system. Tools handy for assembly process: screwdriver, 11/32, 7/16, 1/2, 9/16 and 5/8" spin-tites, end wrenches and/or sockets, measuring tape.

Note:

All installations are unique in some way, which means it's OK to preassemble certain hardware, or rearrange the assembly process to meet specific site requirements. A quick review of the assembly notes and drawings should help firm up the appropriate strategy. Please remember to double-check all hardware for tightness BEFORE it becomes inaccessible.

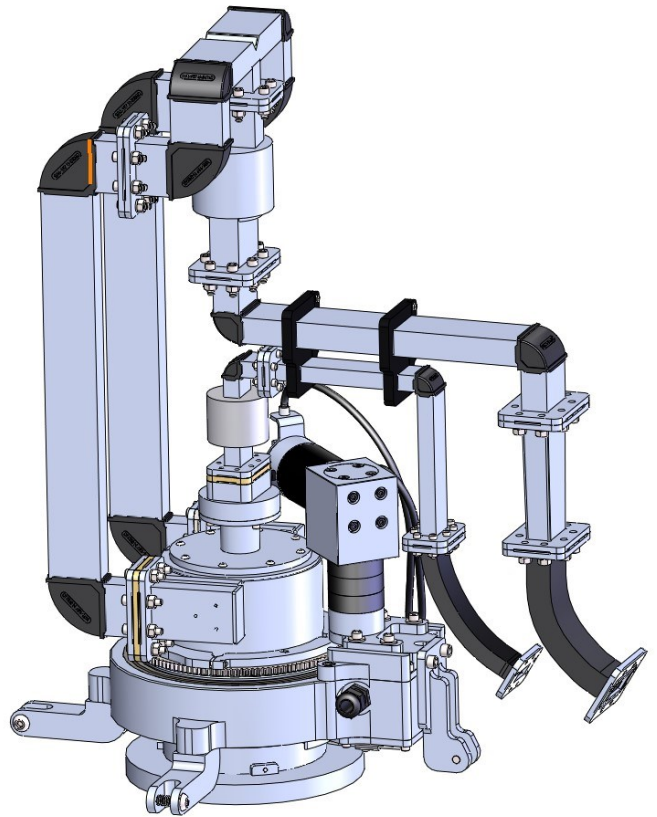
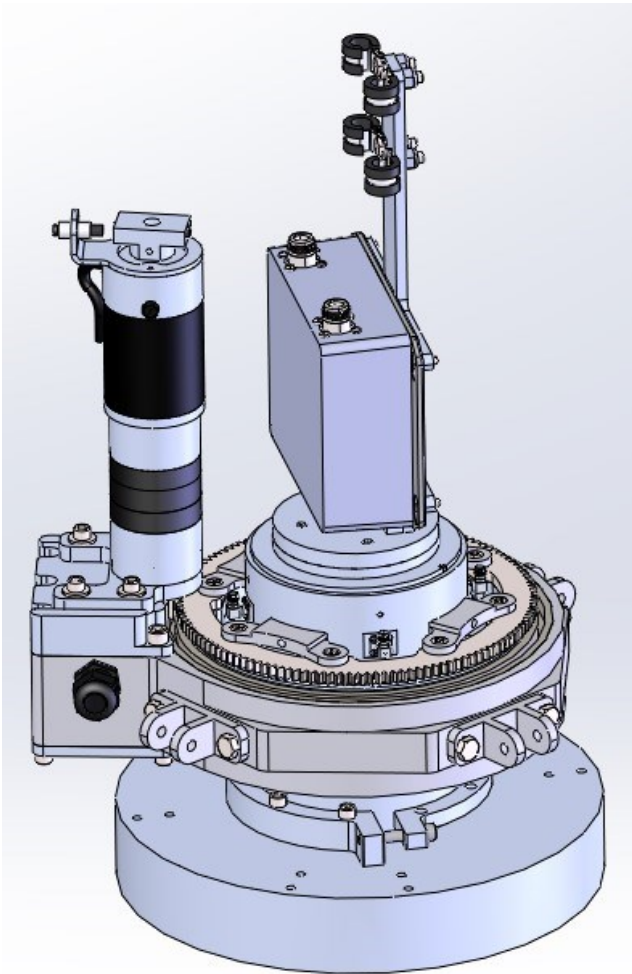
Two containers of zinc paste (Penetrox, Noalox, or equiv.) have been provided to enhance and maintain the quality of all electrical junctions on this system. Apply a thin coat wherever two pieces of aluminum come in contact or any other electrical connections are made. It is also useful on screws and bolt threads as an ANTI SEIZE compound.



FGAE1000-S1-W-D-A-N PARTS & HARDWARE

DESCRIPTION

FGPR-6.5-24DC-PC-2.....	<u>QTY</u> 1
CONNECTOR, CONAXIAL	1



M² ANTENNA SYSTEMS, INC.

4402 N. Selland Ave.

Fresno, CA 93722

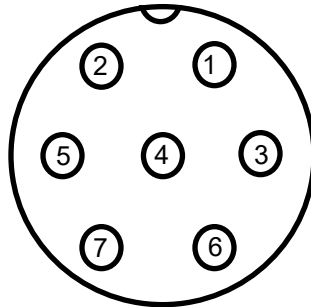
(559) 432-8873 Fax: 432-3059

www.m2inc.com Email: sales@m2inc.com

7 PIN CONNECTOR DETAIL

1. Route cable thru connector assembly or back shell.
2. Match colors and letters and solder wires to connector pins as shown above. Use shrink tubing (3/4" per wire) to cover solder connections.

Note: Connector picture taken from back shell of connector.



PIN#	WIRE COLOR	CONTROLER PIN#	SIGNAL NAME
1	WHT	10	REED
2	BLK	11	REED
3	DRAIN	12	SHIELD
4	UN USED	UN USED	
5	UN USED	UN USED	
6	BLK	1	MOTOR
7	RED	2	MOTOR

WIRE REQUIREMENTS :
ALPHA WIRE H1 PT# 2242C
DESCRIPTION:
2 PAIR 18AWG, W/ SHIELD
OR EQUIVALENT

12 Month Limited Warranty Information

This warranty gives you specific legal rights. You may also have other rights which will vary from state to state or province to province.

M2 warrants the **FGPR-6.5-24DC-PC-2** Positioner unit against defects in material and workmanship for a **period of 12 months** from date of purchase. During the warranty period, **M2** will, at its option, either repair or replace products or components which prove to be defective. The warranty shall not apply to defects or damage resulting from:

- Improper or inadequate maintenance by user
- Improperly prepared installation site
- Unauthorized modifications or misuse
- Accident, abuse, or misapplication
- Normal wear

M2 specifically does not warrant this product for any direct, indirect, consequential, or incidental damages arising from the use or inability to use the product. Some states or provinces do not allow the exclusion or limitation of liability for consequential or incidental damages so the above limitation may not apply.

In the event repair or replacement are necessary, purchaser shall contact M2 for return authorization. In many cases this contact can simplify and expedite the repair / replacement process and help reduce costs and downtime.

The purchaser shall be responsible for packing the product properly for return and for charges to ship the product to **M2**. Always include with the shipment, a statement detailing the problem / failure and any other pertinent observations. Insuring the product for shipment is recommended. Use the original packing materials whenever possible. **M2** is responsible for charges (**in the United States**) to return the repaired / replacement product only where warranty service is involved.

M2 Antenna Systems, Inc. 4402 N. Selland Ave. Fresno, CA 93722
(559) 432-8873 Fax (559) 432-3059 Web: www.m2inc.com