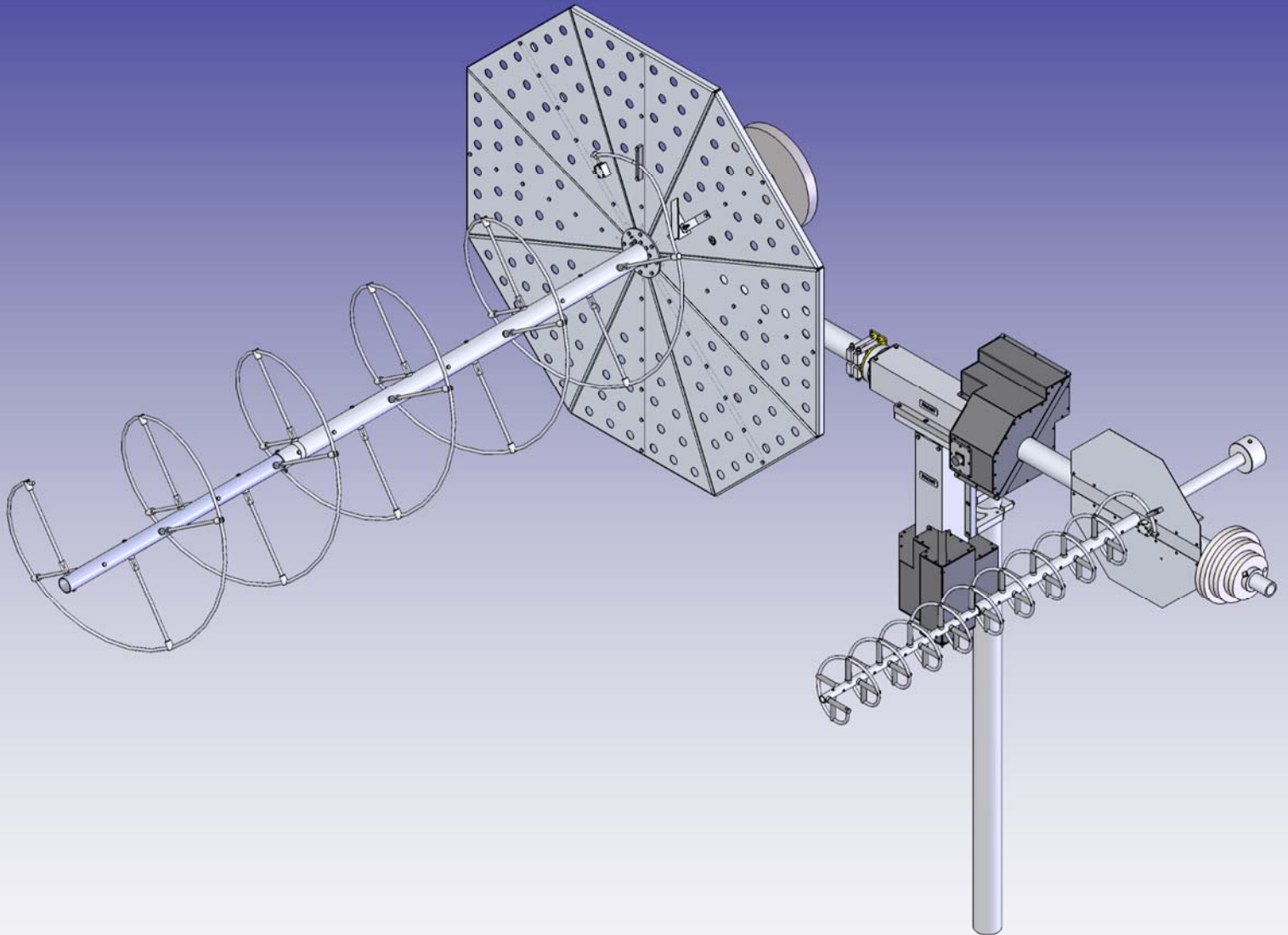




# M2 Antenna Systems, Inc. Model No. System Sample 3 125-175-5 & 400-600-10 Helix



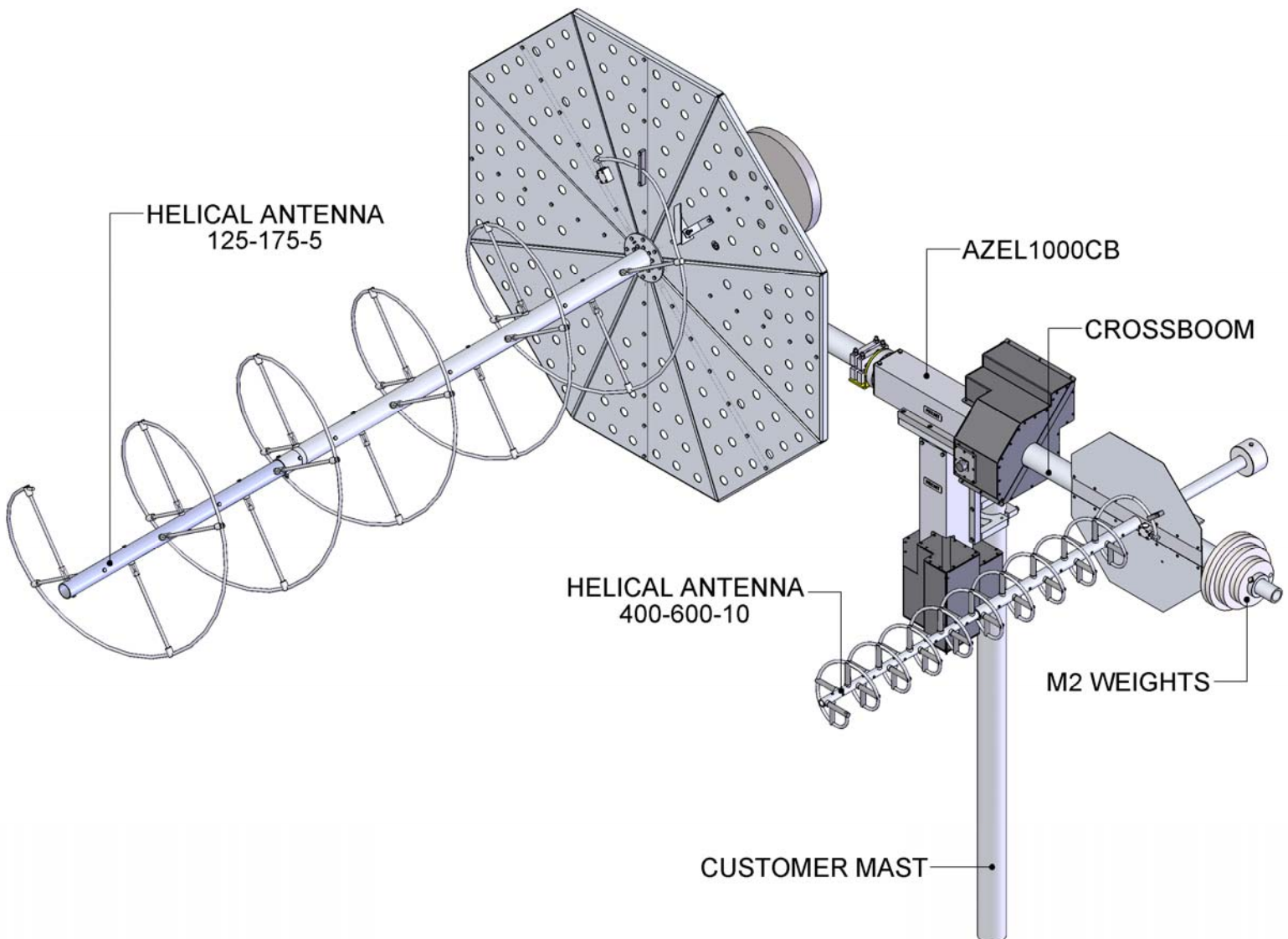
# COMPLETE SYSTEM OVERVIEW

**BEFORE YOU BEGIN:** Look over all the DRAWINGS to get familiar with the various parts and assemblies in the system. Tools handy for assembly process: screwdriver, 11/32, 7/16, 1/2, 9/16 and 5/8" spin-tites, end wrenches and/or sockets, measuring tape.

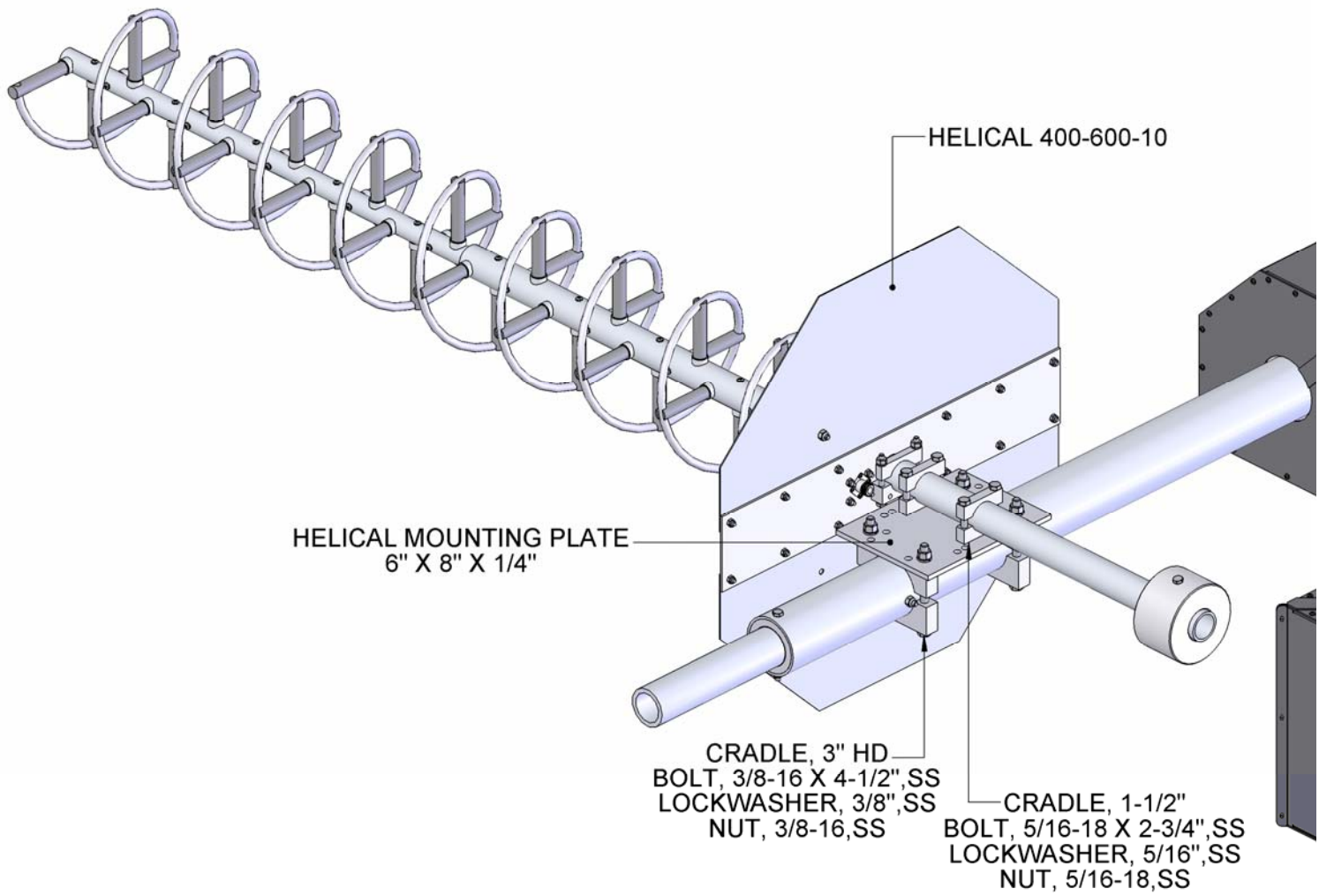
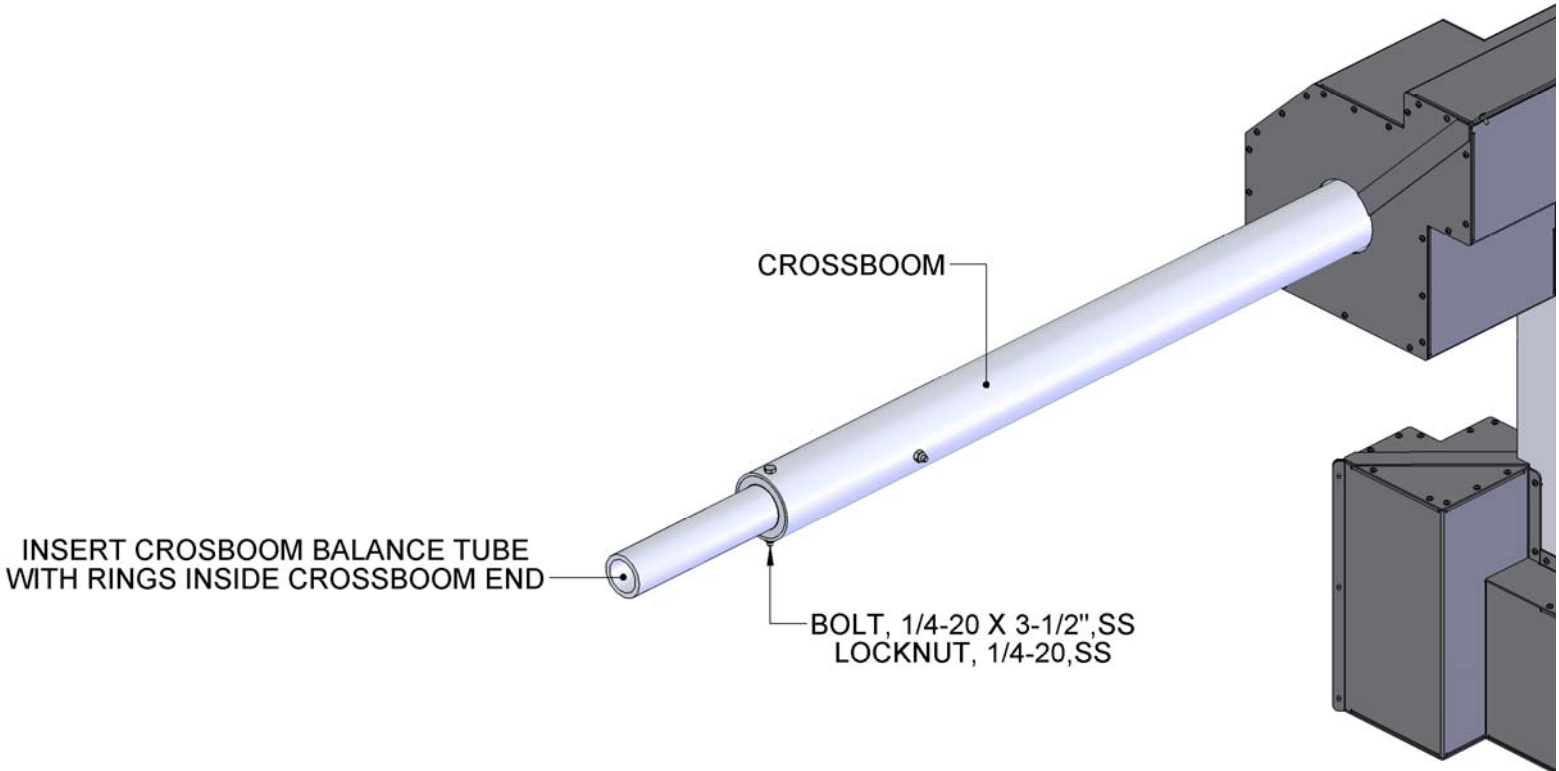
**Note:**

All installations are unique in some way, which means it's OK to preassemble certain hardware, or rearrange the assembly process to meet specific site requirements. A quick review of the assembly notes and drawings should help firm up the appropriate strategy. Please remember to double-check all hardware for tightness **BEFORE** it becomes inaccessible.

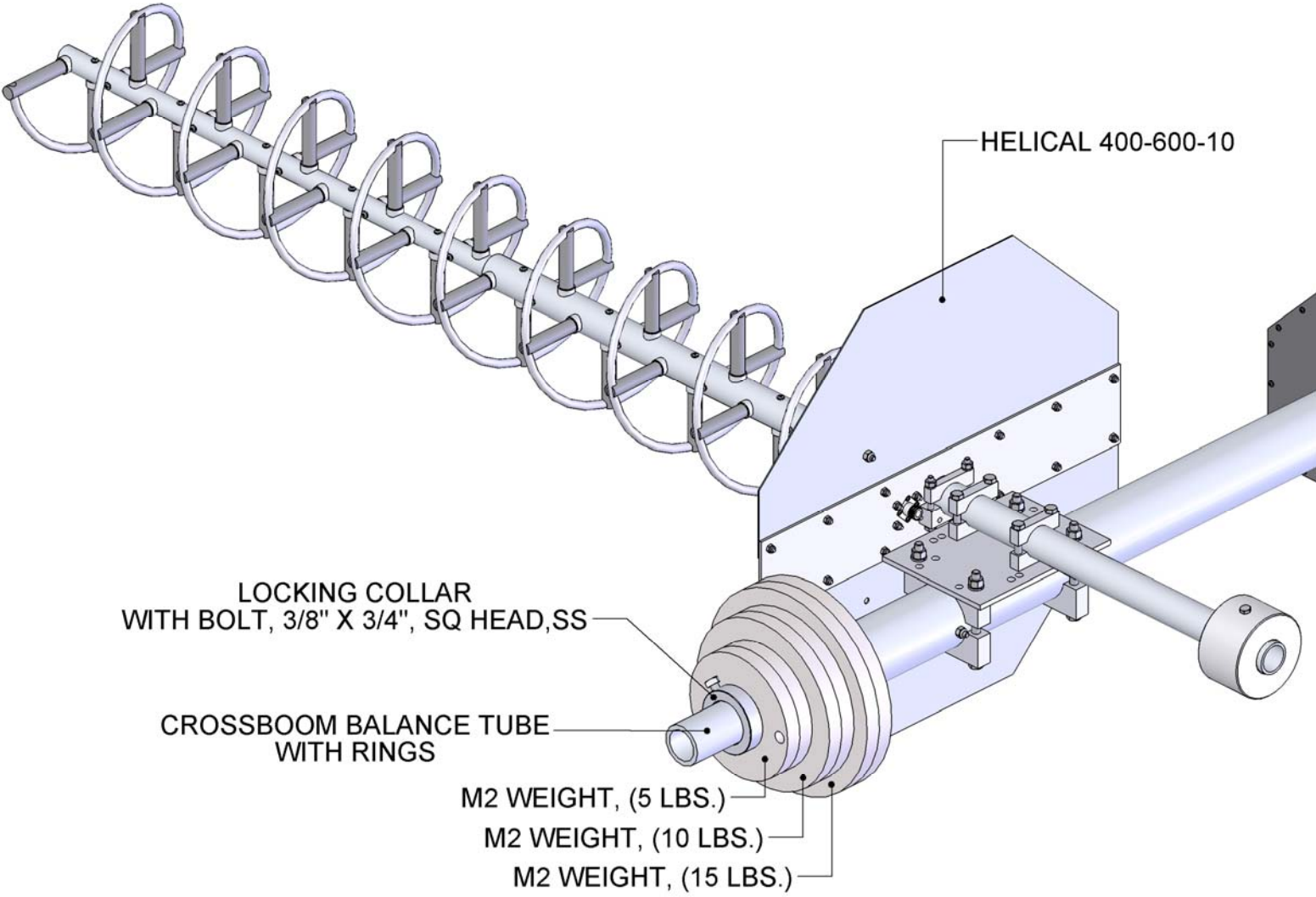
**Two containers of zinc paste (Penetrox, Noalox, or equiv.) have been provided to enhance and maintain the quality of all electrical junctions on this system. Apply a thin coat wherever two pieces of aluminum come in contact or any other electrical connections are made. It is also useful on screws and bolt threads as an ANTI SEIZE compound.**



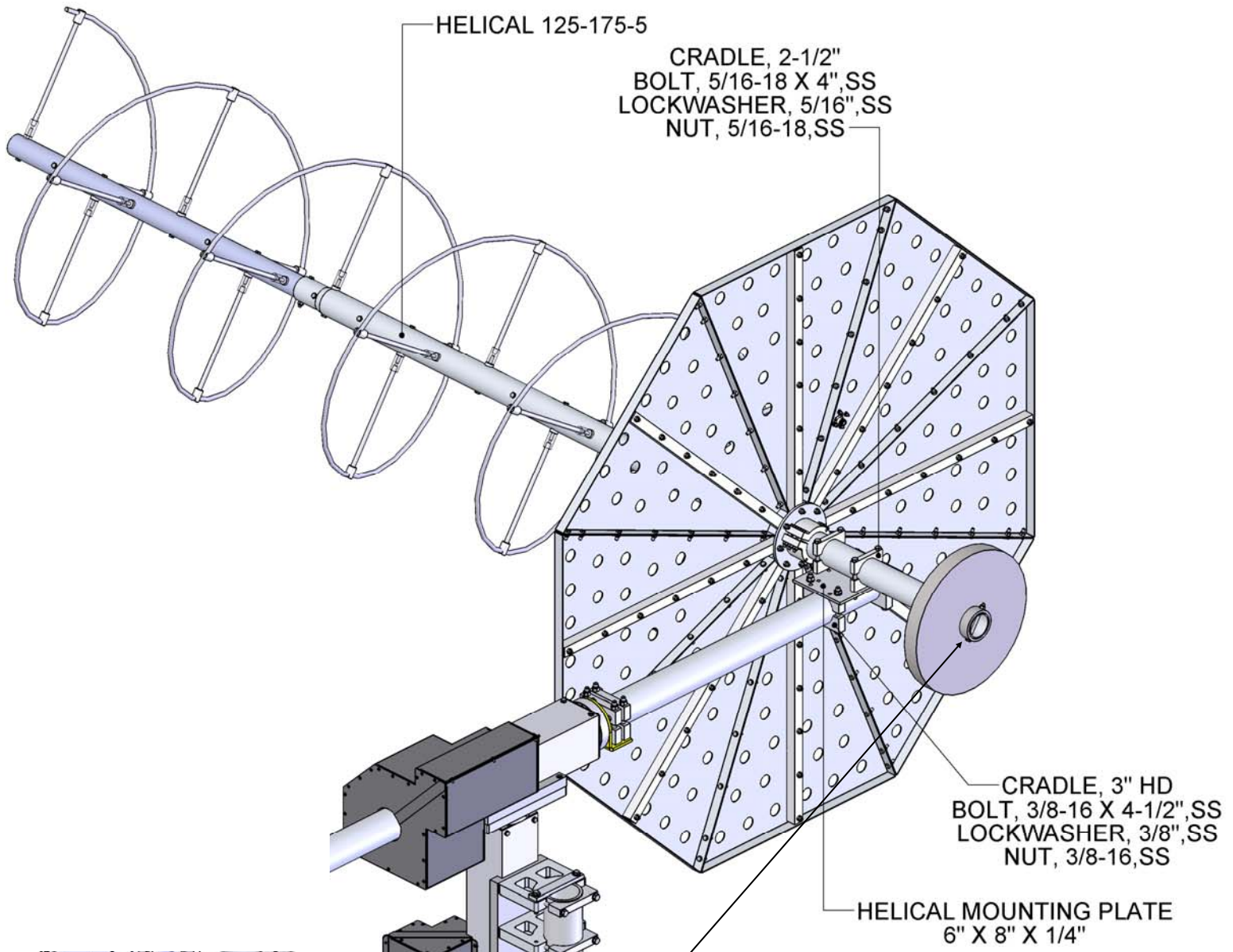
# HELICAL 400-600-10 MOUNTING DETAIL



# HELICAL 400-600-10 MOUNTING DETAIL



# HELICAL 125-175-5 MOUNTING DETAL



**NOTE:**

ADJUST WEIGHT FOR OPTIMUM BALANCE  
RE DRILL LOCKING BOLT AS NEEDED.

# PARTS & HARDWARE LIST

<b><u>DESCRIPTION</u></b>	<b><u>QTY</u></b>
AZEL1000CB (SAAE1100 + SAAE1120 + 3" Pipe Mount Option) .....	1
Crossboom, 3" X 0.125 X 96" .....	1
Crossboom Balance Tube with Rings.....	1
M2 Weight, 15 Lbs.....	2
M2 Weight, 10 Lbs.....	2
M2 Weight, 5 Lbs.....	2
Weight Locking Collar.....	1
Helical Mounting Plate, 6" X 8" X 1/4".....	2
Cradle HD, 3" (M2AMC0140) .....	8
Cradle, 1-1/2" (M2AMC0125) .....	4
Helical Antenna, 125-175-5 .....	1
Helical Antenna, 400-600-10 .....	1
RC2800PRKX2SU.....	1
Penetrox or Zinc Paste (Cup). .....	2
 <b><u>HARDWARE</u></b>	
Bolt, 3/8-16 x 4-1/2", Hex Head, S.S. ....	8
Bolt, 3/8-16 x 3/4", Sq. Head, S.S.....	1
Lock Washer, 3/8", S.S. ....	8
Nut, 3/8-16, S.S. ....	8
Bolt, 5/16-18 x 2-3/4", Hex Head, S.S. ....	4
Lock Washer, 5/16", S.S. ....	4
Nut, 5/16-18, S.S. ....	4
Bolt, 1/4-20 x 3-1/2", Hex Head, S.S. ....	2
Lock Nut, 1/4-20, S.S. ....	2