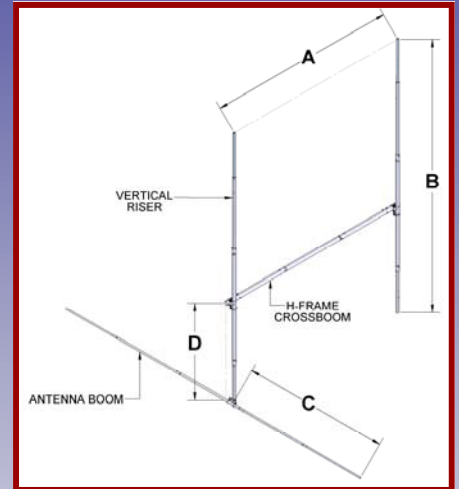
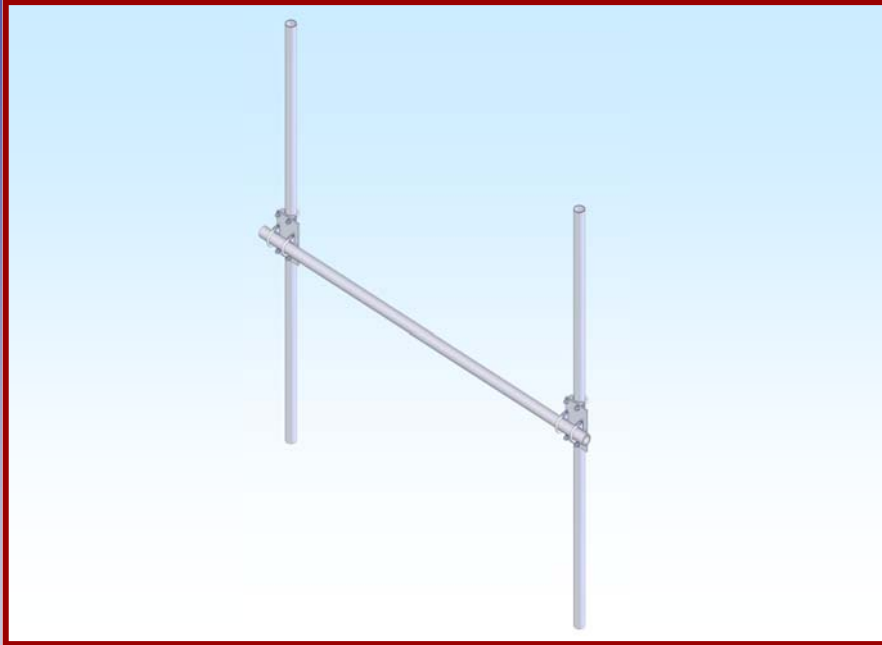




# M2 Antenna Systems, Inc.

## Model No: HF432EME12X4-YAS



### SPECIFICATIONS:

Model .....	HF432EME12X4-YAS	Weight .....	9 Lbs.
Band.....	432	A Dim .....	56"
Antenna.....	432-12EME	B Dim .....	60"
T-Brace .....	None	C Dim .....	N/A
Cross Boom Dia .....	1-1/2" X 0.125 X 60"	D Dim .....	29.8"
Wind Load w/o Ant.....	1.26 Sq. Ft.		

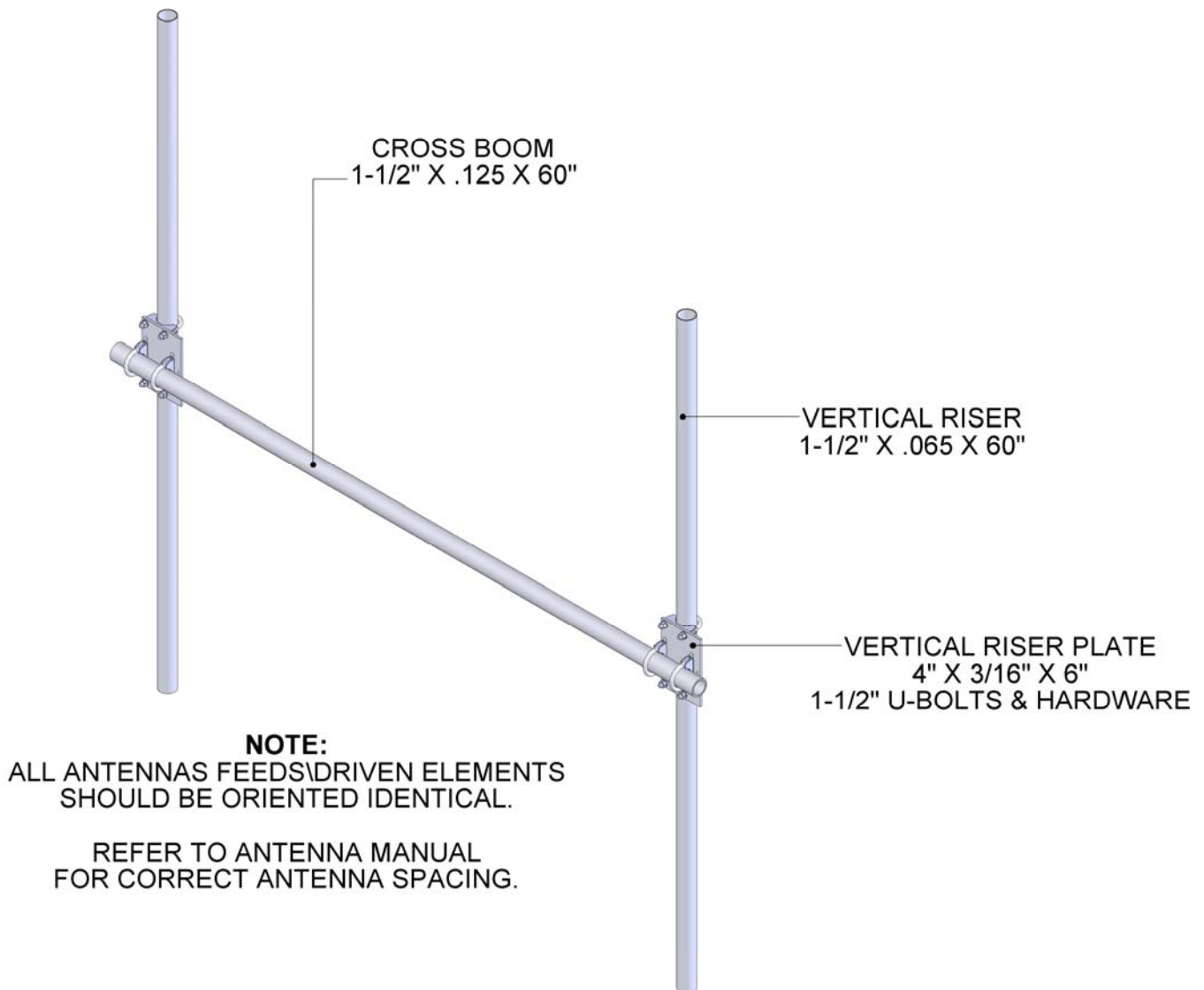
**FEATURES:** M2 has been a leader in high performance antennas since it started back in 1984. In addition to specialized antenna designs, we also developed a diverse line of multiple antenna support structures (loosely referred to as H frames) to maintain that high level of performance. Just like the antenna, the support structure becomes nearly as complex and varied. All antennas have a defined near field size and shape and in order to achieve maximum "array performance", the support structure must accommodate the careful coupling of these near fields.

In many cases the support structure, has to meet special customer requirements like size, weight, wind speed or area, and weather issues. Our standard H frames then are a composite of these features that should satisfy most customer needs. We enjoy discussing your needs and offering our opinion regarding what best can meet your situation.

# HF432EME12X4-YAS ASSEMBLY MANUAL

All installations are unique in some way, which means it's OK to preassemble certain hardware, or rearrange the assembly process to meet specific site requirements. A quick review of the assembly notes and drawings should help firm up the appropriate strategy. Please remember to double-check all hardware for tightness BEFORE it becomes inaccessible.

These notes assume an assembled cross boom of adequate dimensions and U-bolts of the same size for attaching H-frame plates. Unless you ordered a COMPLETE M2 'H' FRAME. If you just ordered the vertical booms and specified a cross boom U-bolt size when ordering, some drilling or other fabrication may be necessary. Stainless locknuts or nuts and lock washers are supplied for all kit U-bolts. All other assembly hardware is stainless steel unless otherwise noted. Forged steel parts are galvanized.



## M<sup>2</sup> ANTENNA SYSTEMS, INC.

4402 N. SELLAND AVE.

FRESNO, CA 93722

(559) 432-8873 FAX: 432-3059

[www.m2inc.com](http://www.m2inc.com) Email: [sales@m2inc.com](mailto:sales@m2inc.com)

# HF432EME12X4-YAS PARTS & HARDWARE

DESCRIPTION.....	QTY
CROSS BOOM: 1-1/2" X .125 X 60" .....	1
VERTICAL RISER #1: 1-1/2" X .065 X 60" .....	2
VERTICAL RISER PLATE, 4" X 3/16" X 6" (M2APT0022).....	2
ASSEMBLY MANUAL.....	1

**HARDWARE:**

U-BOLT AND CRADLE, 1-1/2" .....	10
LOCKWASHER, 5/16, SS .....	16
NUT, 5/16-18, SS.....	16

**M<sup>2</sup> ANTENNA SYSTEMS, INC.**

4402 N. SELLAND AVE.

FRESNO, CA 93722

(559) 432-8873 FAX: 432-3059

[www.m2inc.com](http://www.m2inc.com) Email: [sales@m2inc.com](mailto:sales@m2inc.com)