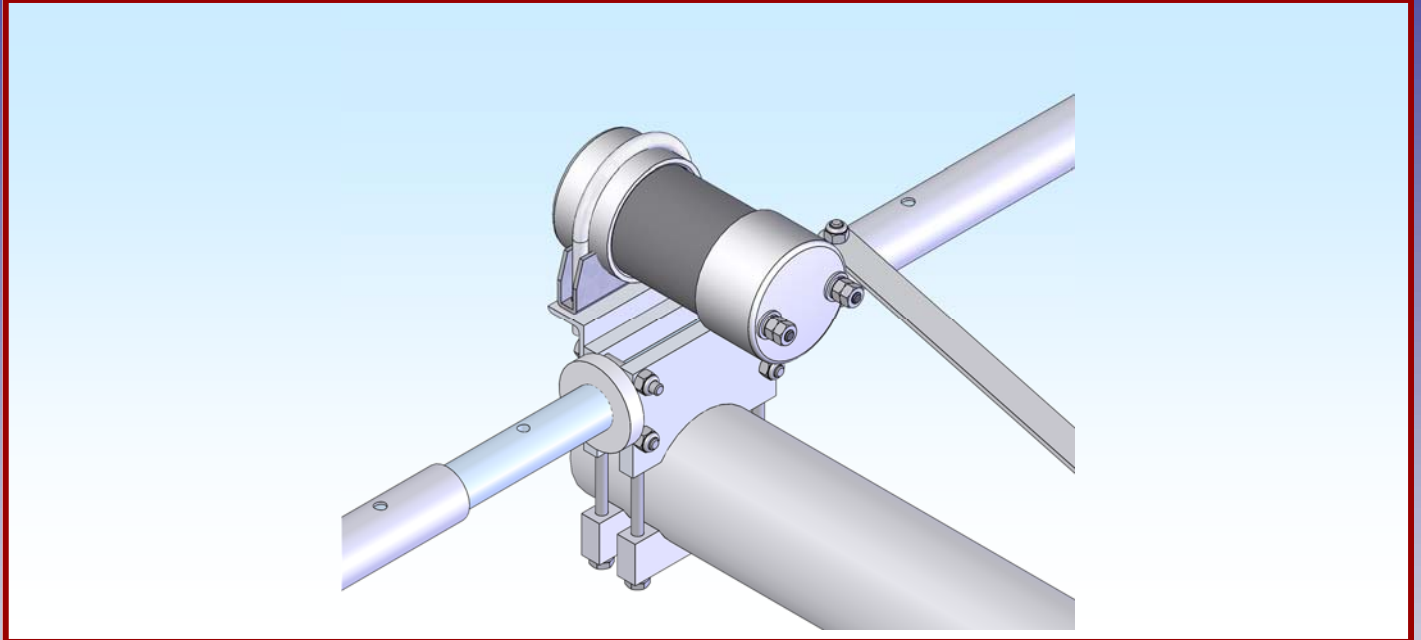




M2 Antenna Systems, Inc.

Model No: FGKLMUP12



SPECIFICATIONS:

Model FGKLMUP12
Element Size..... 1" X 0.058
Boom Dia 3.0
Weight..... 6 Lbs.

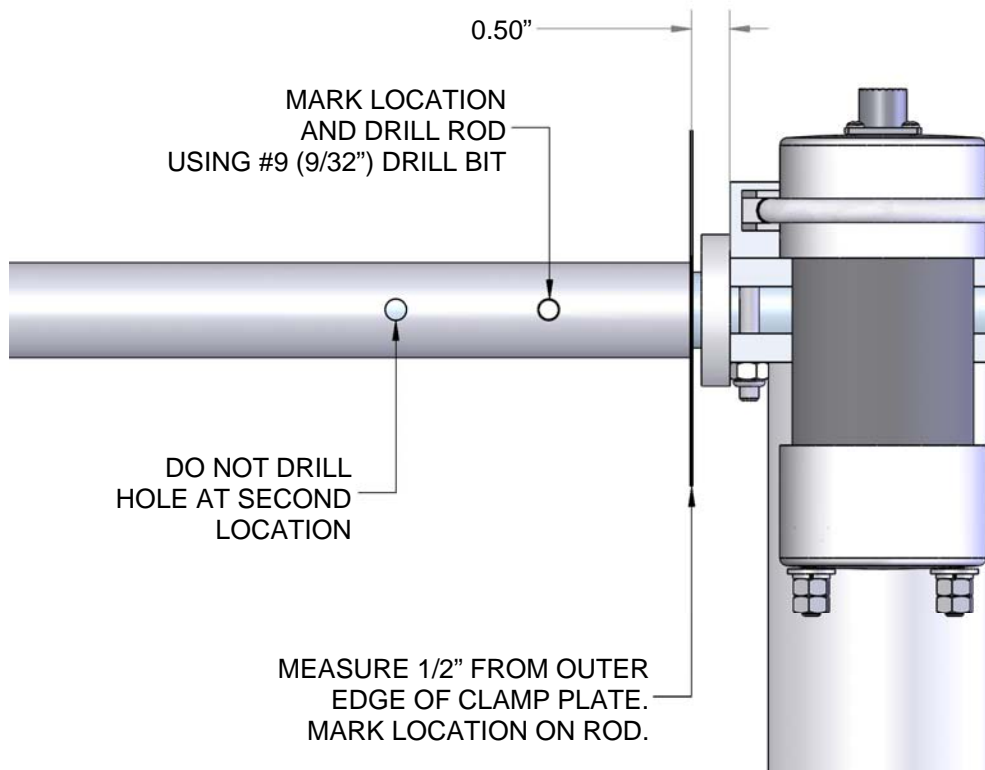
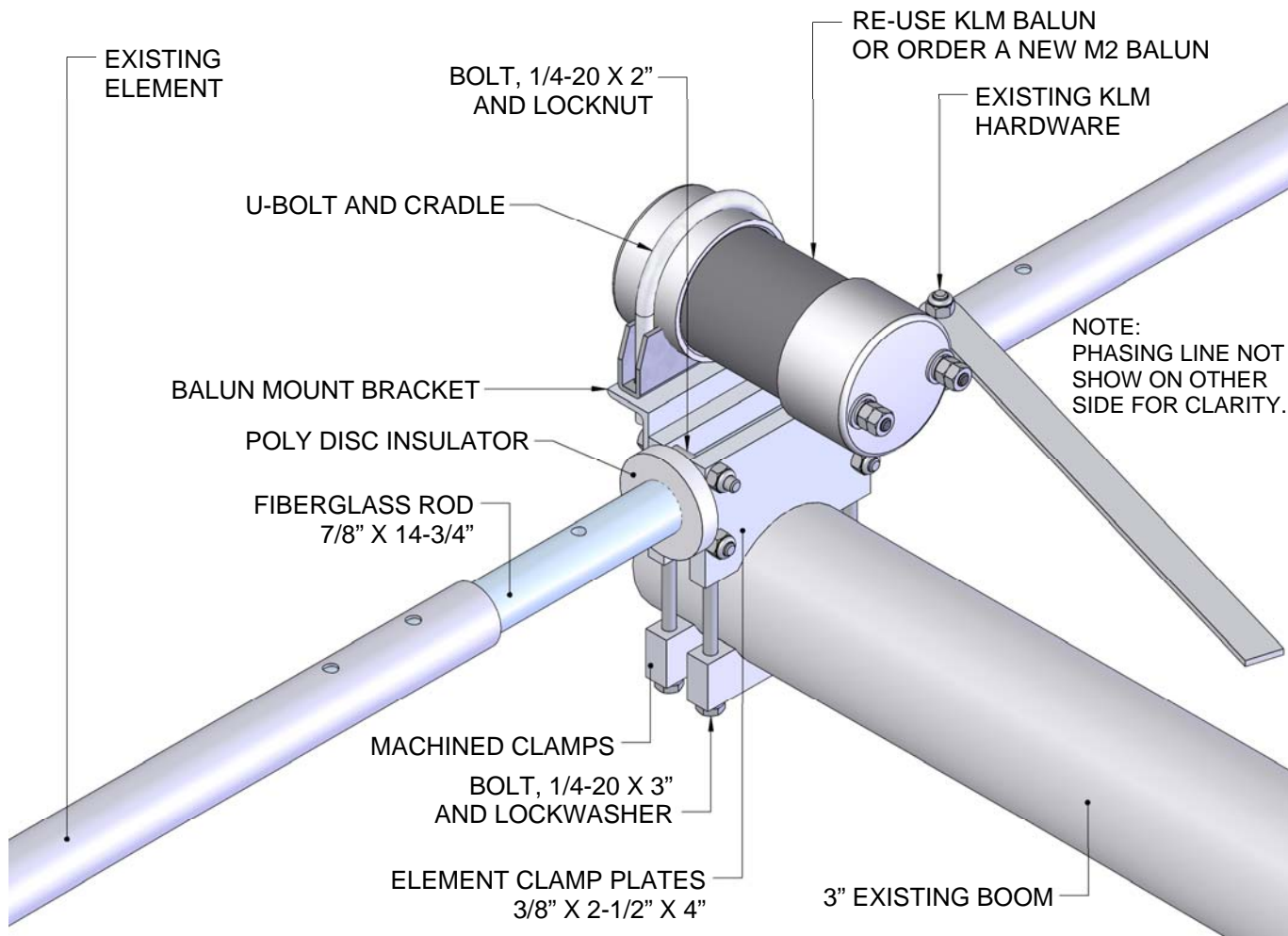
FEATURES:

Machined from solid aluminum, the FGKLMUP12 replaces the older plastic KLM element clamps used in KLM's original KT-34 design. Using ultra-precise computer numerically controlled (CNC) manufacturing techniques, these clamps provide a secure grip under even the worst conditions. All-aluminum clamp construction eliminates susceptibility to ultra-violet radiation, wind and cold.

Direct replacement for the front and rear driven elements on the KLM KT-34 series, these require very little additional work to replace weakened plastic pieces. They clamp easily to the boom and eliminate stresses resulting from the split-element concept by joining each element half with a 7/8" diameter solid fiberglass rod for a single super-strong, ultra-resilient element. This clamp kit also includes an aluminum balun mounting bracket.

Other antennas can also benefit from this upgrade. Many popular HF antennas, made by KLM and other manufacturers use 1" diameter tubing with .058" wall thickness for driven elements. On a 3" boom, this element clamp is ideal. Do you have an HF antenna design that you would like to try? These clamps are perfect for home brew projects. Use them with 1" x .058" tubing to create driven elements for your own Yagi or log periodic design.

KLM TO M2 (KT34 & KT34XA) CONVERSION KIT



1. Assemble the HF Element Clamp Plates and install fiberglass rod as shown.
2. Slide the two poly disc insulators flush against outer edge of element clamp.
3. Measure 1/2" from outer edge of element clamp plates, mark this location.
4. Slide existing element sleeve assembly up to 1/2" mark.
5. Mark the location of first hole and drill thru the rod using a #9 (9/32") drill bit .
6. Re-attach the sleeve element assemblies and phasing lines to the fiberglass using original KLM hardware.

(FGKLMUP12) PARTS & HARDWARE

<u>DESCRIPTION</u>	<u>QTY</u>
FIBERGLASS ROD, 1" X 14-3/4" (M2AFG0030)	1
HF ELEMENT CLAMP, 3/8" X 2-1/2" X 4" (M2AEC0038).....	2
MACHINED CRADLE, 3" (M2AMC0136)	2
POLY DISC INSULATOR, 7/8" (M2ADI0040)	2
BALUN MOUNT BRACKET (M2APT0015).....	1
U-BOLT & CRADLE, 2"	1
U-BOLT & CRADLE, 1-1/2"	1
 HARDWARE	
LOCKNUT, 5/16-18, SS	2
BOLT, 1/4-20 X 3" SS.....	4
BOLT, 1/4-20 X 2" SS.....	4
LOCKWASER, 1/4" SS.....	4
LOCKNUT, 1/4-20, SS	4

M² ANTENNA SYSTEMS, INC.

4402 N. Selland Ave.

Fresno, CA 93722

(559) 432-8873 Fax: 432-3059

www.m2inc.com Email: sales@m2inc.com